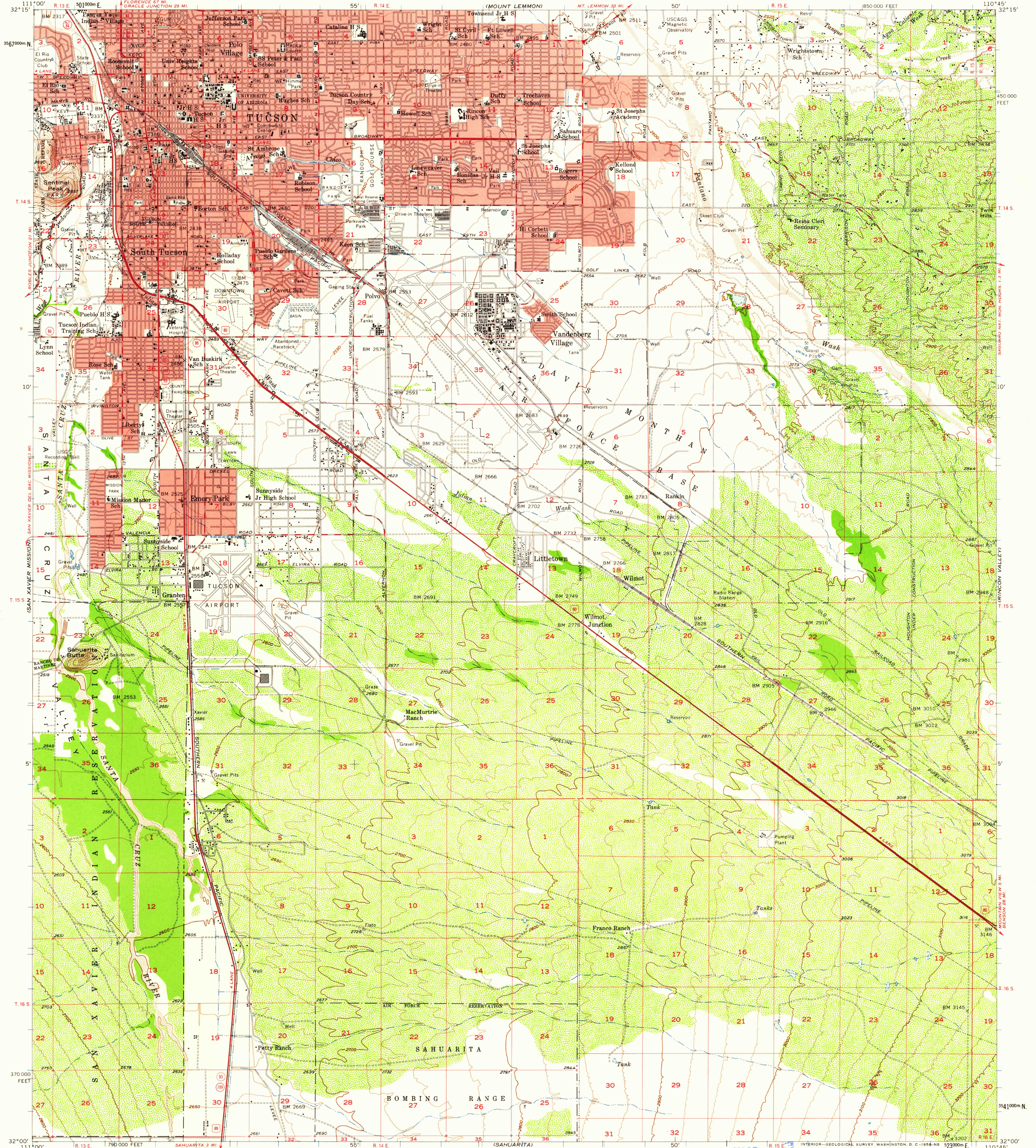


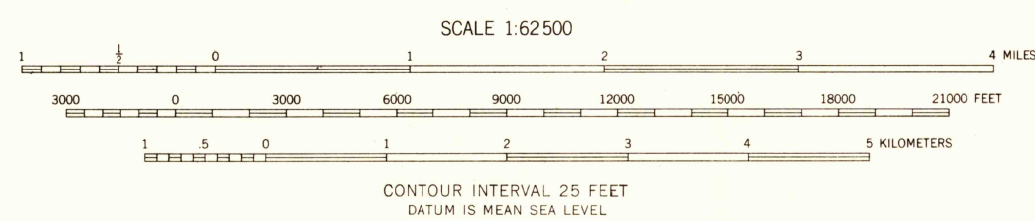
UNITED STATES  
DEPARTMENT OF THE INTERIOR  
GEOLOGICAL SURVEY

TUCSON QUADRANGLE  
ARIZONA-PIMA CO.  
15 MINUTE SERIES (TOPOGRAPHIC)



Maped, edited, and published by the Geological Survey  
Control by USGS and USC&GS  
Topography by planetable methods 1946, Culture revised 1957  
Polyconic projection. 1927 North American datum  
10,000-foot grid based on Arizona coordinate system,  
central zone  
1000-meter Universal Transverse Mercator grid ticks,  
zone 12, shown in blue  
Red tint indicates areas in which only  
landmark buildings are shown

TRUE NORTH  
MAGNETIC NORTH  
APPROXIMATE MEAN  
DECLINATION, 1957



USGS  
Historical File  
Topographic Division

ROAD CLASSIFICATION  
Heavy-duty ——— Light-duty - - - - -  
Medium-duty - - - - - Unimproved dirt - - - - -  
U.S. Route (circle with number) State Route (circle with number)



U.S.G.S.  
FILE COPY  
TOPOGRAPHIC DIVISION

TUCSON, ARIZ.  
N3200-W11045/15  
1957

FOR SALE BY U. S. GEOLOGICAL SURVEY, DENVER 2, COLORADO OR WASHINGTON 25, D. C.  
A FOLDER DESCRIBING TOPOGRAPHIC MAPS AND SYMBOLS IS AVAILABLE ON REQUEST

JAN 23 1959  
3680