

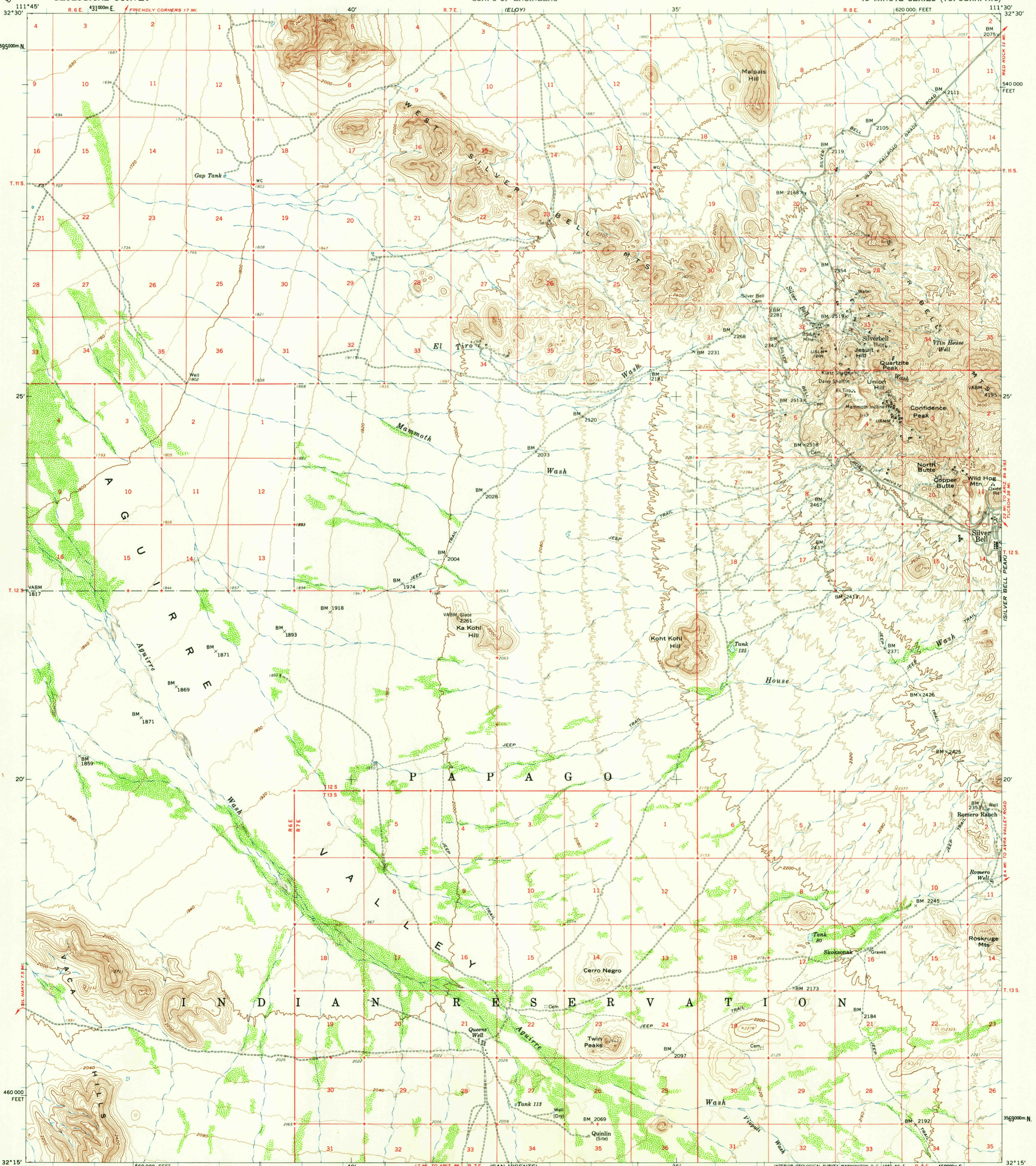
SILVER REEF MOUNTAINS

UNITED STATES DEPARTMENT OF THE INTERIOR GEOLOGICAL SURVEY

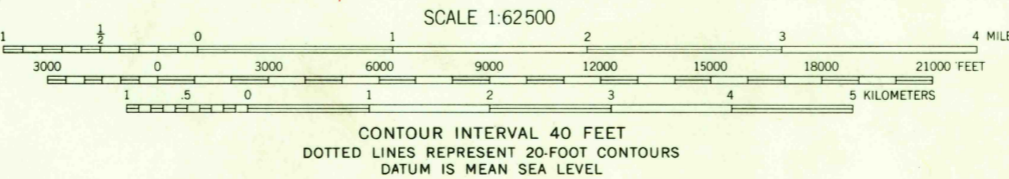
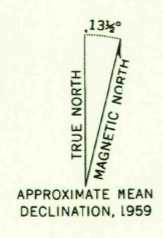
UNITED STATES DEPARTMENT OF THE ARMY CORPS OF ENGINEERS

VACA HILLS QUADRANGLE ARIZONA-PIMA CO. 15 MINUTE SERIES (TOPOGRAPHIC)

RED ROCK



Mapped, edited, and published by the Geological Survey Control by USGS and USC&GS Topography from aerial photographs by photogrammetric methods Aerial photographs taken 1958. Advance field check 1959 Polyconic projection. 1927 North American datum 10,000-foot grid based on Arizona coordinate system, central zone 1000-meter Transverse Mercator grid ticks, zone 12, shown in blue Land lines unsurveyed in T. 13 S.-R. 6 E. and in parts of T. 12 S.-Rs. 6, 7 and 8 E.



CONTOUR INTERVAL 40 FEET DOTTED LINES REPRESENT 20 FOOT CONTOURS DATUM IS MEAN SEA LEVEL

USGS Historical File Topographic Division



ROAD CLASSIFICATION Light-duty Unimproved dirt

THIS MAP COMPLIES WITH NATIONAL MAP ACCURACY STANDARDS FOR SALE BY U.S. GEOLOGICAL SURVEY, DENVER 25, COLORADO OR WASHINGTON 25, D. C. A FOLDER DESCRIBING TOPOGRAPHIC MAPS AND SYMBOLS IS AVAILABLE ON REQUEST

USGS FILE COPY TOPOGRAPHIC DIVISION

VACA HILLS, ARIZ. N3215-W1130/15 1959

MAY - 4 1961 2025