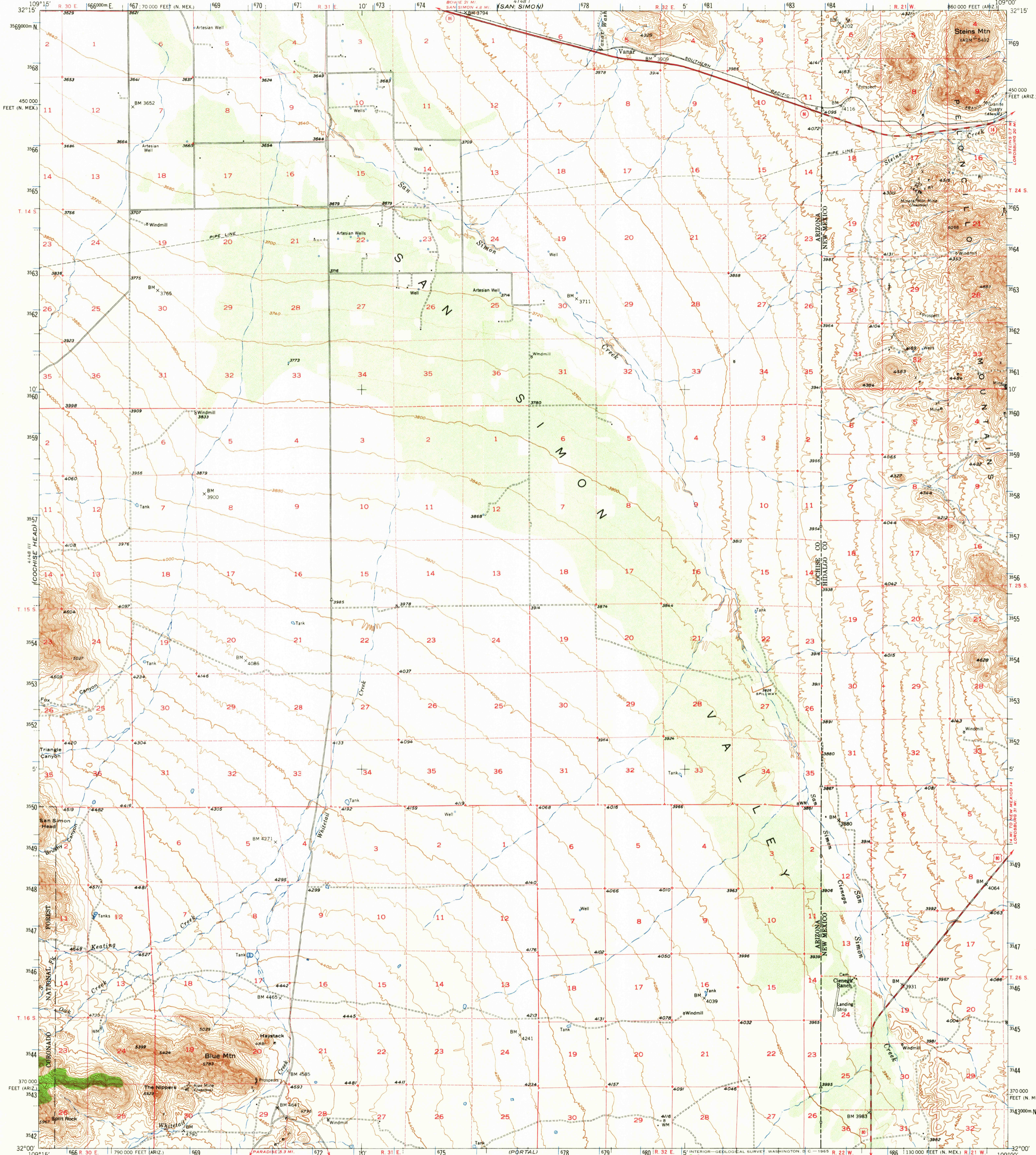


4148 II (BOWIE)

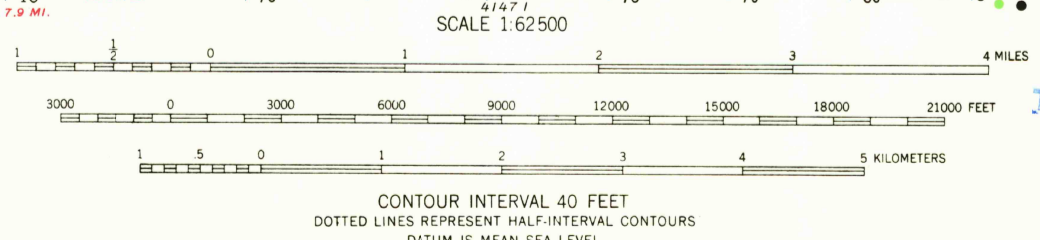
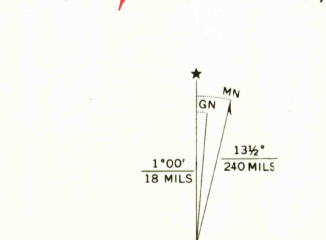
UNITED STATES DEPARTMENT OF THE INTERIOR GEOLOGICAL SURVEY

UNITED STATES DEPARTMENT OF THE ARMY CORPS OF ENGINEERS

VANAR QUADRANGLE ARIZONA-NEW MEXICO 15 MINUTE SERIES (TOPOGRAPHIC)



Maped, edited, and published by the Geological Survey... Control by USGS and USC&GS... Topography from aerial photographs by multiplex methods and by plane-table surveys 1950... Aerial photographs taken 1947... Polyconic projection. 1927 North American datum... Dashed land lines indicate approximate location... 1000-meter Universal Transverse Mercator grid ticks, zone 12, shown in blue



ROAD CLASSIFICATION: Heavy-duty, Medium-duty, U.S. Route, Light-duty, Unimproved dirt, State Route. Includes legend for LANE 15 LANE and LANE 16 LANE.

THIS MAP COMPLIES WITH NATIONAL MAP ACCURACY STANDARDS FOR SALE BY U.S. GEOLOGICAL SURVEY, DENVER, COLORADO 80225 OR WASHINGTON, D. C. 20242 A FOLDER DESCRIBING TOPOGRAPHIC MAPS AND SYMBOLS IS AVAILABLE ON REQUEST

U.S.G.S. FILE COPY TOPOGRAPHIC DIVISION

VANAR, ARIZ.-N. MEX. N3200-W10900/15 1950 AMS 4148 II-SERIES V798

OCT 1 41965 3610