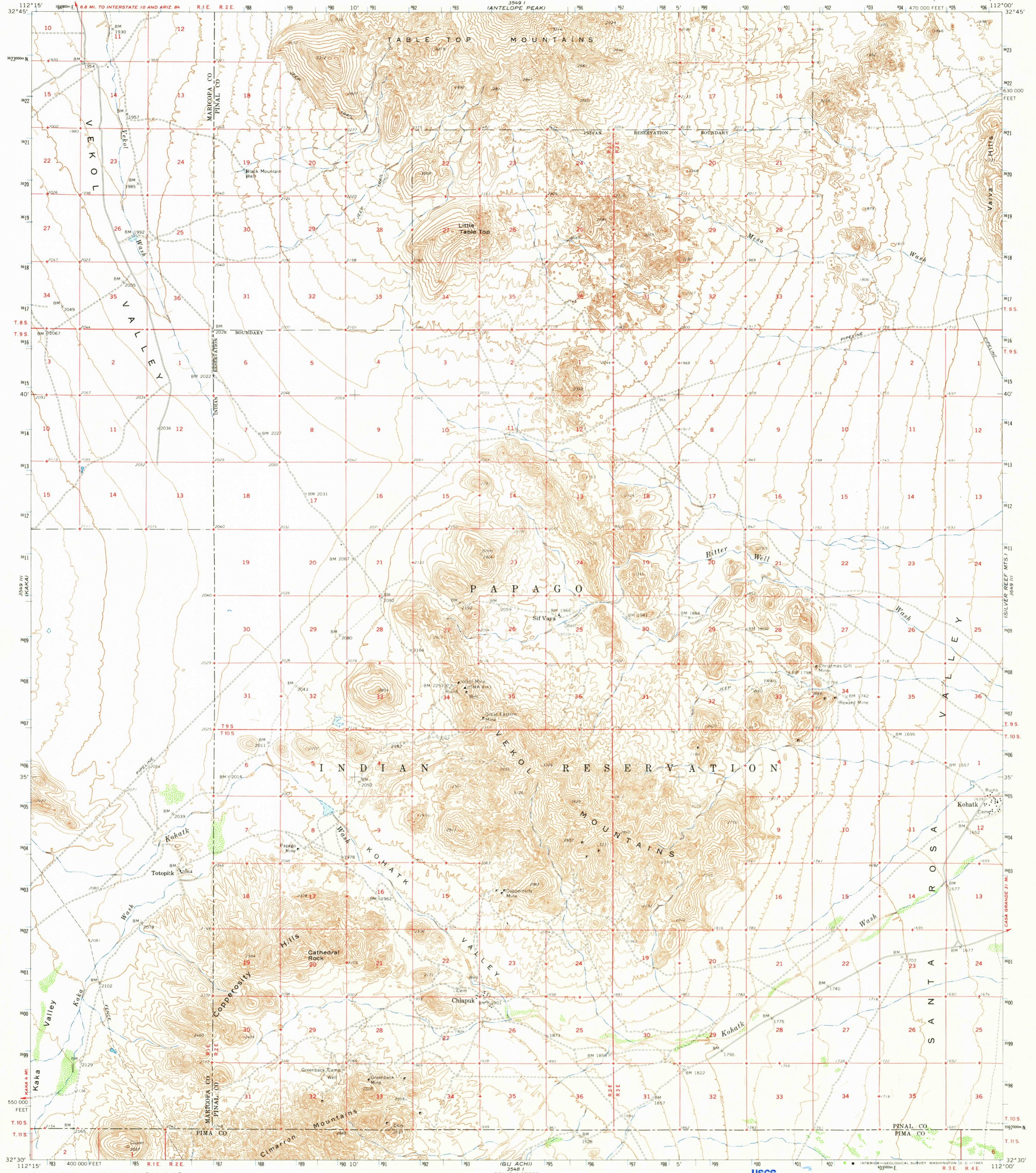


3549 I (ESTRELLA)

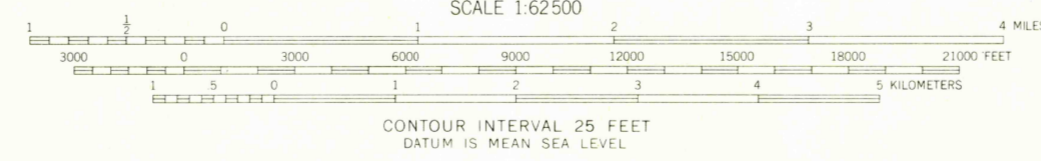
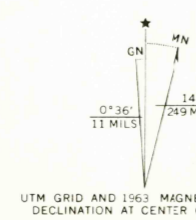
UNITED STATES
DEPARTMENT OF THE INTERIOR
GEOLOGICAL SURVEY

VEKOL MOUNTAINS QUADRANGLE
ARIZONA
15 MINUTE SERIES (TOPOGRAPHIC)

3649 IV (KASA GRANDE)



Mapped, edited, and published by the Geological Survey
Control by USGS and USC&GS
Topography by planetable surveys 1938-1939. Revised 1963
Polyconic projection. 1927 North American datum
10,000-foot grid based on Arizona coordinate system; central zone
1000-meter Universal Transverse Mercator grid ticks,
zone 12, shown in blue
Where omitted, land lines have not been established



CONTOUR INTERVAL 25 FEET
DATUM IS MEAN SEA LEVEL

USGS
Historical File
Topographic Division

ROAD CLASSIFICATION
Light-duty ————— Unimproved dirt - - - - -



U.S.G.S. VEKOL MOUNTAINS, ARIZ. N3230-W11200/15
1963

FOR SALE BY U. S. GEOLOGICAL SURVEY, DENVER 25, COLORADO OR WASHINGTON 25, D. C.
A FOLDER DESCRIBING TOPOGRAPHIC MAPS AND SYMBOLS IS AVAILABLE ON REQUEST

FILE COPY
TOPOGRAPHIC DIVISION
AMS 3549 II-SERIES V798
APR 14 1965