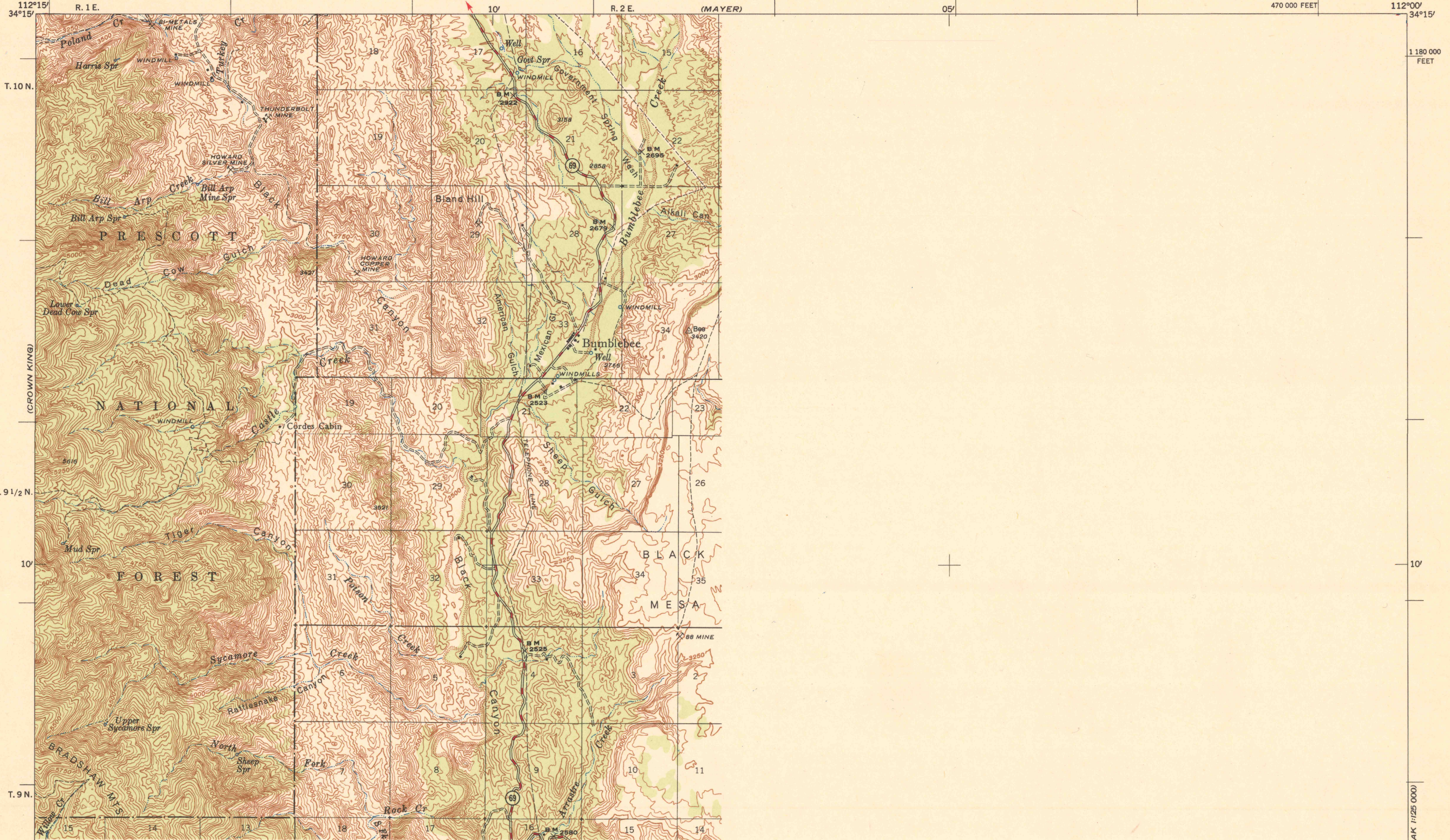


Limited edition for administrative use only
Not for public distribution

UNITED STATES
DEPARTMENT OF AGRICULTURE
FOREST SERVICE

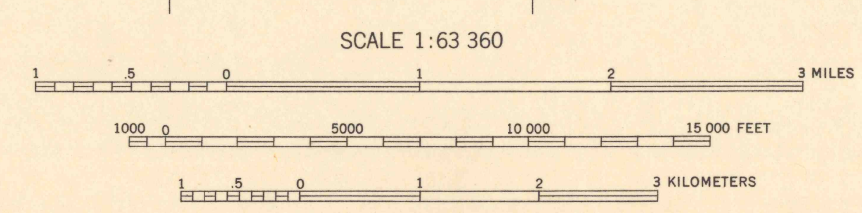
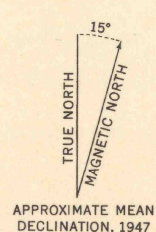
BUMBLEBEE QUADRANGLE
ARIZONA-YAVAPAI CO.
16-MINUTE SERIES (TOPOGRAPHIC)



THIS AREA IS SHOWN ON THE MAP OF BRADSHAW MOUNTAINS
QUADRANGLE, SURVEYED IN 1900-1904, SCALE 1:125,000



Mapped, edited, and published by U. S. Forest Service
Control by U. S. Forest Service, U.S.G.S. and U.S.C. & G.S.
Topography by stereophotogrammetric methods (KEK plotter)
Aerial photographs taken 1946. Field check 1947
Polyconic projection. 1927 North American Datum
10,000 foot grid based on Arizona Coordinate System,
Central Zone
Dashed land lines indicate approximate location



CONTOUR INTERVAL 50 FEET
DATUM IS MEAN SEA LEVEL
THIS MAP COMPLIES WITH NATIONAL MAP ACCURACY STANDARDS

REPRODUCED BY THE U. S. COAST AND GEODETIC SURVEY 1948
ROADS CLASSIFIED IN 1947
ALL WEATHER ROADS: Dependable hard-surface heavy-duty, Secondary hard surface, More than two lanes
DRY WEATHER ROADS: Loose surface graded, Unsurfaced graded, Dirt road
U. S. Route 80, State route 208

Woods or brushwood

BUMBLEBEE, ARIZ.
N3400-W11200/15
PRINTED 1948

GEOLOGICAL SURVEY
RECEIVED
NOV 1 - 1948
MAP INFORMATION OFFICE