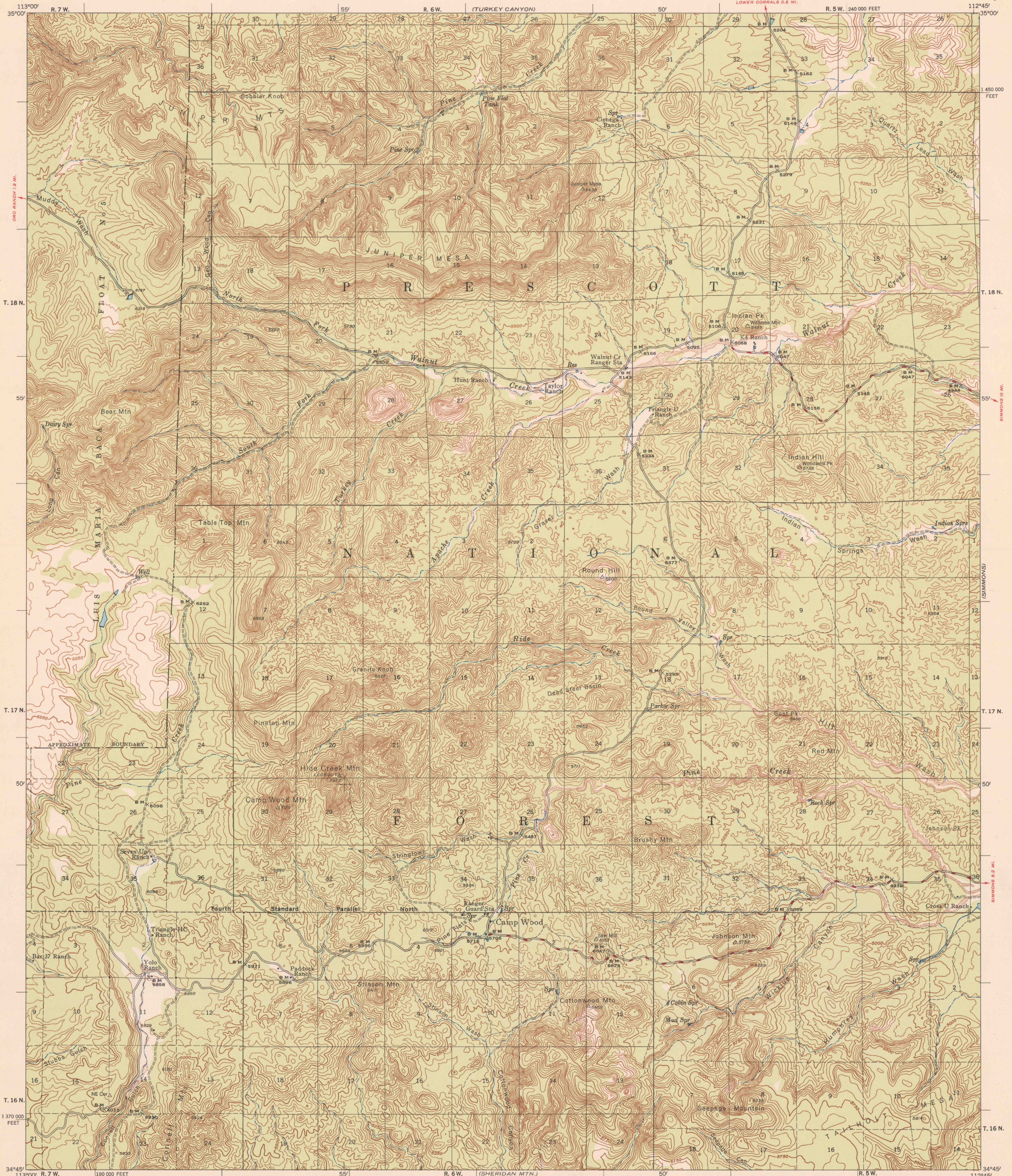


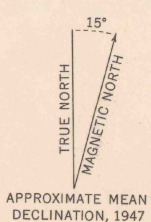
Limited edition for administrative use only
Not for public distribution

UNITED STATES
DEPARTMENT OF AGRICULTURE
FOREST SERVICE

CAMP WOOD QUADRANGLE
ARIZONA-YAVAPAI CO.
15-MINUTE SERIES (TOPOGRAPHIC)

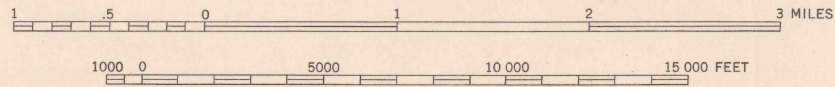


Mapped, edited, and published by U. S. Forest Service
Control by U. S. Forest Service, U.S.G.S. and U.S.C. & G.S.
Topography by stereophotogrammetric methods (KEK plotter)
Aerial photographs taken 1946. Field check 1947
Polyconic projection. 1927 North American Datum
10,000 foot grid based on Arizona Coordinate System,
Central Zone
Dashed land lines indicate approximate location



RECEIVED
JAN 17 1949
MAP INFORMATION OFFICE

SCALE 1:63 360



CONTOUR INTERVAL 50 FEET
DATUM IS MEAN SEA LEVEL

THIS MAP COMPLIES WITH NATIONAL MAP ACCURACY STANDARDS

REPRODUCED BY THE U. S. COAST AND GEODETIC SURVEY 1948
ROADS CLASSIFIED IN 1947

- | | |
|------------------------------------|----------------------|
| ALL WEATHER ROADS | DRY WEATHER ROADS |
| Dependable hard-surface heavy-duty | Loose surface graded |
| Secondary hard surface | Unsurfaced graded |
| More than two lanes | Dirt road |
| U. S. Route 80 | State route |

Woods or brushwood

CAMP WOOD, ARIZ.
N3445-W11245/15
PRINTED 1948