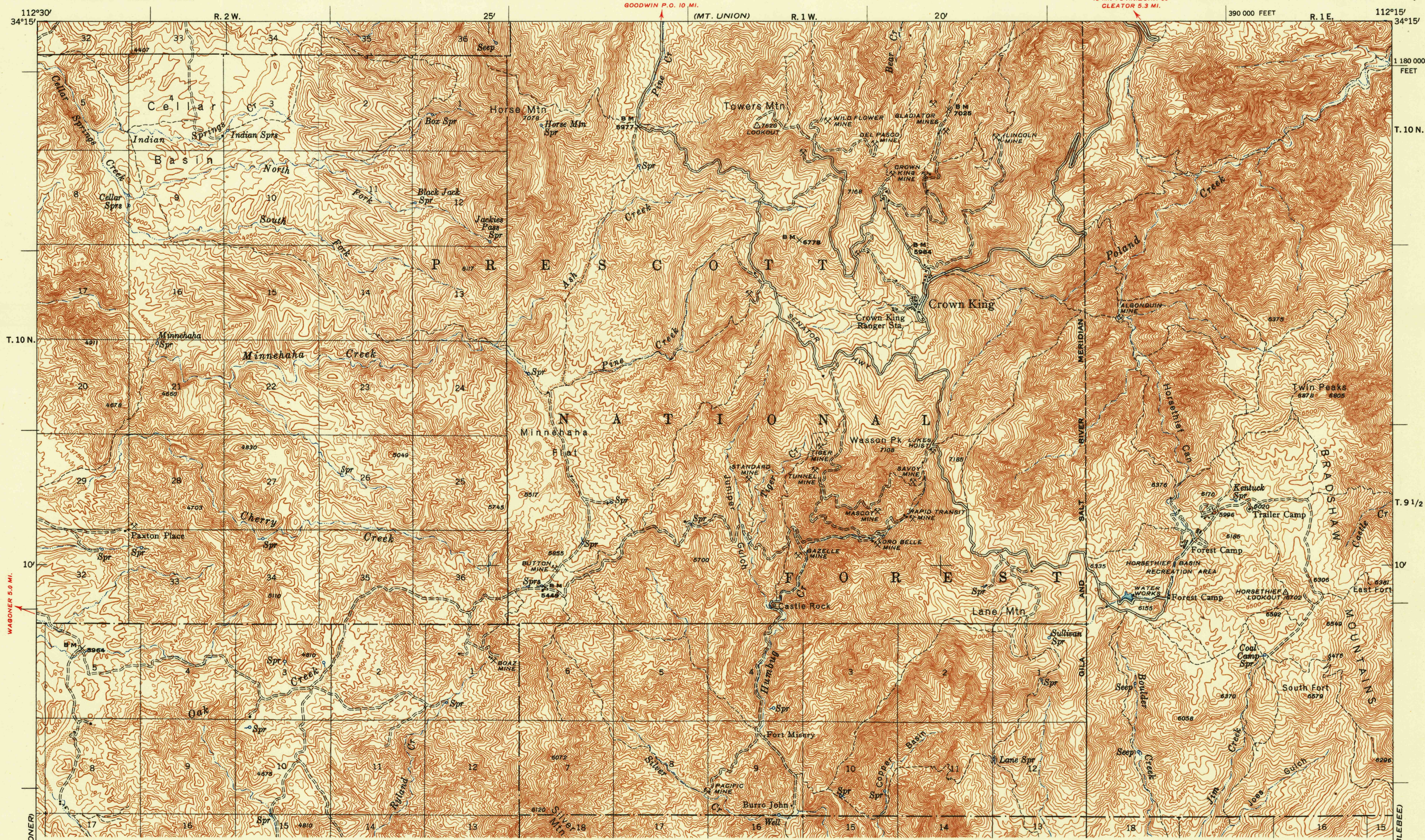


Limited edition for administrative use only
Not for public distribution

UNITED STATES
DEPARTMENT OF AGRICULTURE
FOREST SERVICE

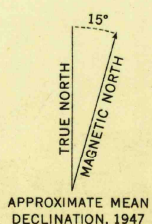
GROWN KING, QUADRANGLE
ARIZONA-YAVAPAI CO.
15-MINUTE SERIES (TOPOGRAPHIC)



THIS AREA IS SHOWN ON THE MAP OF BRADSHAW MOUNTAINS
QUADRANGLE, SURVEYED IN 1900-1901, SCALE 1:125,000

34°00' 112°30' 330 000 FEET 25' 20' 34°00' 112°15'

Mapped, edited, and published by U. S. Forest Service
Control by U. S. Forest Service, U.S.G.S. and U.S.C. & G.S.
Topography by stereophotogrammetric methods (KEK plotter)
Aerial photographs taken 1946. Field check 1947
Polyconic projection. 1927 North American Datum
10,000 foot grid based on Arizona Coordinate System,
Central Zone
Dashed land lines indicate approximate location



SCALE 1:63 360
1 5 0 1 2 3 MILES
1000 0 5000 10 000 15 000 FEET

1 .5 0 1 2 3 KILOMETERS

CONTOUR INTERVAL 50 FEET
DATUM IS MEAN SEA LEVEL
THIS MAP COMPLIES WITH NATIONAL MAP ACCURACY STANDARDS

REPRODUCED BY THE U. S. COAST AND GEODETIC SURVEY 1948

ROADS CLASSIFIED IN 1947
ALL WEATHER ROADS DRY WEATHER ROADS
Dependable hard-surface heavy-duty Loose surface graded
Secondary hard surface Unsurfaced graded
More than two lanes 3 LANE, 4 LANE Dirt road
U. S. Route 80 State route

Board on Geographic Names
Class
Sheet No.
Date
FEB 3 1950

GROWN KING, ARIZ.
N3400-W11215/15
PRINTED 1948