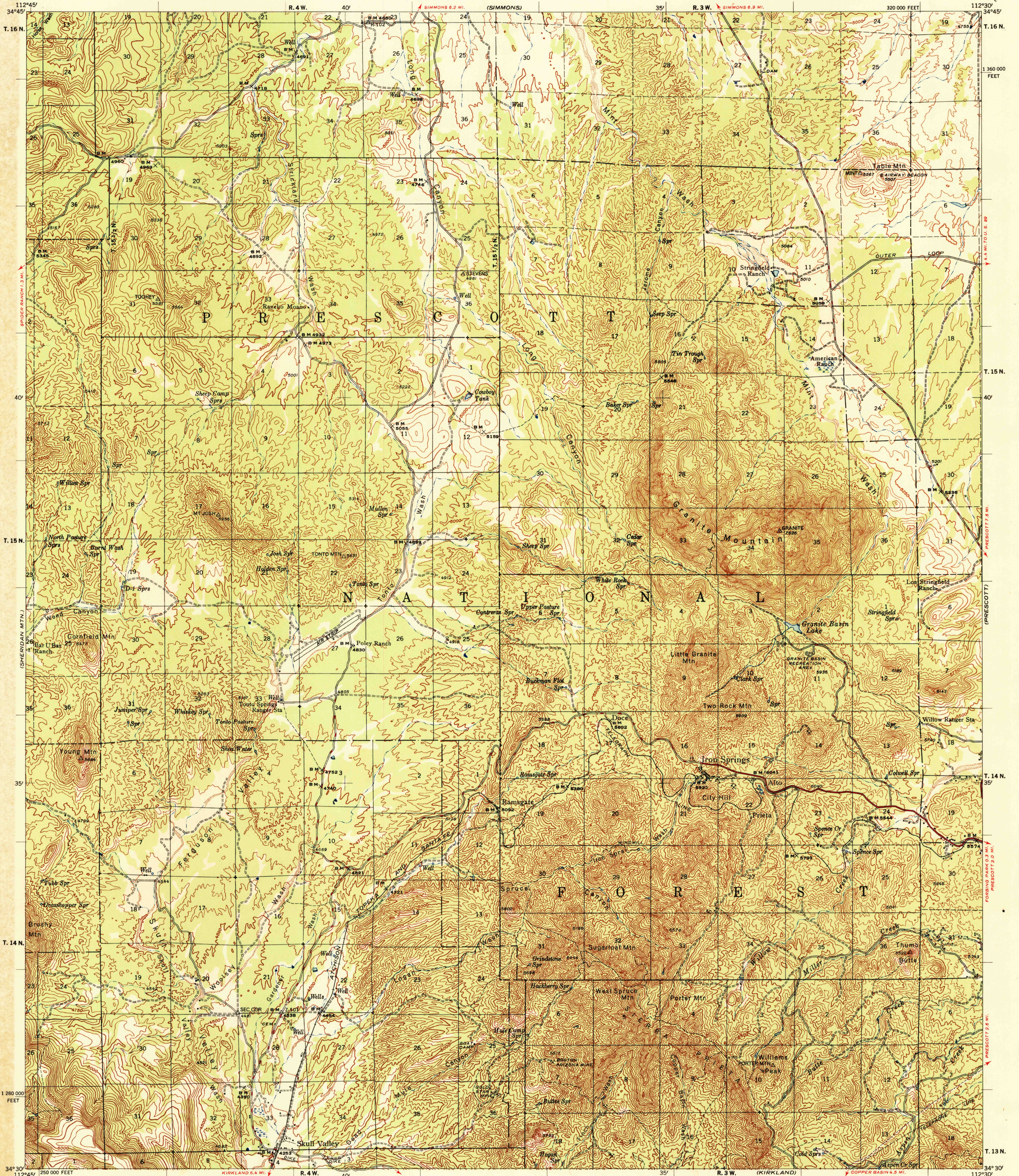


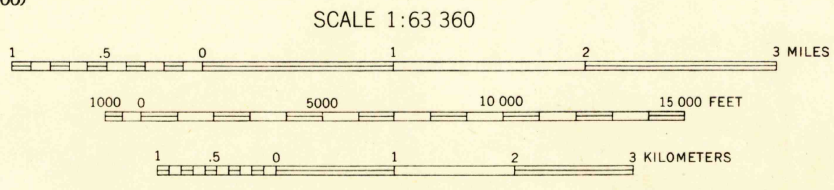
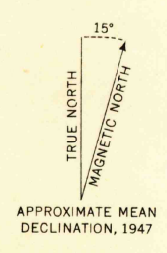
Limited edition for administrative use only
Not for public distribution

UNITED STATES
DEPARTMENT OF AGRICULTURE
FOREST SERVICE

IRON SPRINGS QUADRANGLE
ARIZONA-YAVAPAI CO.
15-MINUTE SERIES (TOPOGRAPHIC)



Maped, edited and published by U.S. Forest Service
Control by U. S. Forest Service, U.S.G.S. and U.S.C. & G.S.
Topography by stereophotogrammetric methods (KEK plotter)
Aerial photographs taken 1946. Field check 1947
Polyconic projection. 1927 North American Datum
10,000 foot grid based on Arizona Coordinate System,
Central Zone
Dashed land lines indicate approximate location



ALL WEATHER ROADS
Dependable hard-surface heavy-duty
Secondary hard surface
More than two lanes
3 LANE, 4 LANE
Dirt road
DRY WEATHER ROADS
Loose surface graded
Unsurfaced graded
U. S. Route
State Route

USGS
Historical File
Topographic Division

IRON SPRINGS, ARIZ.
N3430-W1230/15
PRINTED 1948