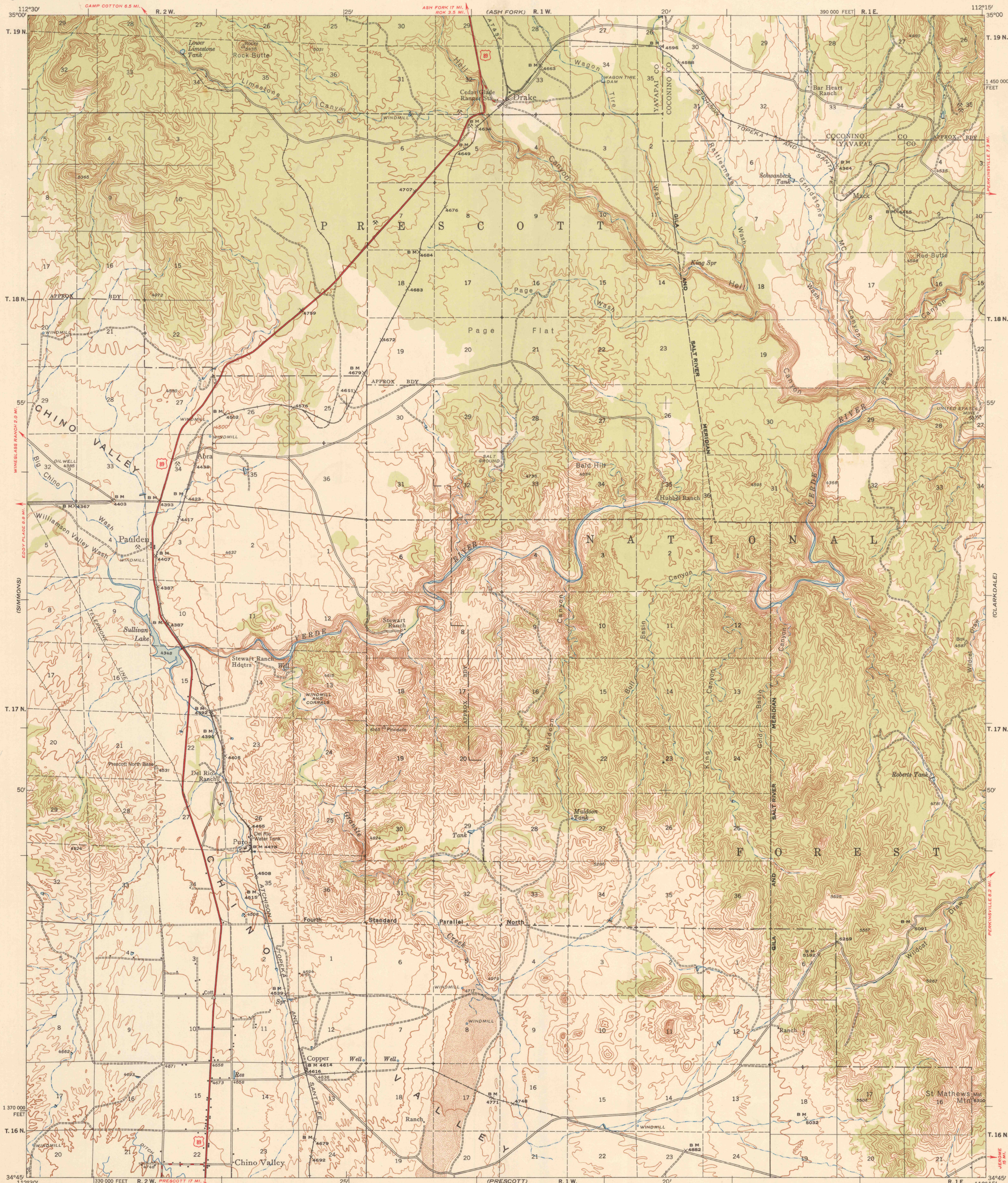


Limited edition for administrative use only  
Not for public distribution

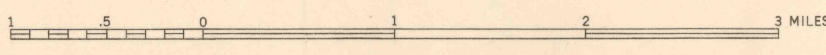
PAULDEN QUADRANGLE  
ARIZONA  
15-MINUTE SERIES (TOPOGRAPHIC)

UNITED STATES  
DEPARTMENT OF AGRICULTURE  
FOREST SERVICE



Mapped, edited, and published by U. S. Forest Service  
Control by U. S. Forest Service, U.S.G.S. and U.S.C. & G.S.  
Topography by stereophotogrammetric methods (K&K plotter)  
Aerial photographs taken 1946. Field check 1947  
Polyconic projection. 1927 North American Datum  
10,000 foot grid based on Arizona Coordinate System,  
Central Zone  
Dashed land lines indicate approximate location

SCALE 1:63 360



CONTOUR INTERVAL 50 FEET  
DATUM IS MEAN SEA LEVEL

THIS MAP COMPLIES WITH NATIONAL MAP ACCURACY STANDARDS

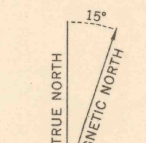
Reproduced by the U. S. Coast and Geodetic Survey 1949

ROADS CLASSIFIED IN 1947

- |                                    |                      |
|------------------------------------|----------------------|
| ALL WEATHER ROADS                  | DRY WEATHER ROADS    |
| Dependable hard-surface heavy-duty | Loose surface graded |
| Secondary hard surface             | Unsurfaced graded    |
| More than two lanes                | Dirt road            |
| U. S. Route                        | State route          |

PAULDEN, ARIZ.  
N3445-W11215/15  
PRINTED 1949

FILE COPY  
MAP INFORMATION OFFICE



APPROXIMATE MEAN  
DECLINATION, 1947

Woods or  
brushwood

PIACACHO BUTTE

IRON SPRINGS

(CLARKDALE)

(MINOUS MTN.)