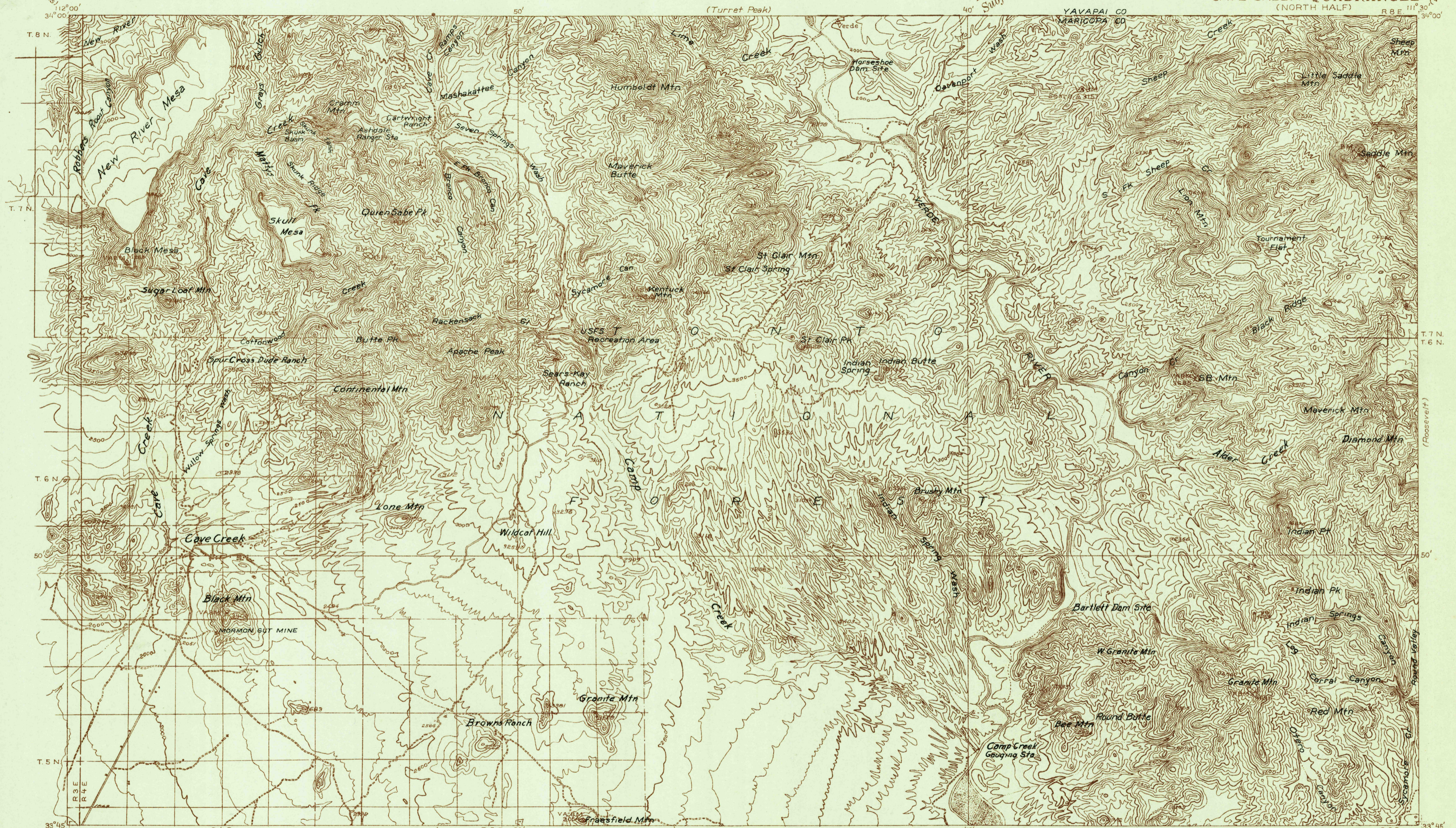


Advance sheet
Subject to correction



H. H. Hodgeson, Division Engineer
Topography by W.G. Carson
Control by U. S. Geological Survey and
U. S. Coast and Geodetic Survey
Surveyed in 1929 and 1930

TRUE NORTH
MAGNETIC NORTH
APPROXIMATE MEAN
DECLINATION, 1930

Scale 1/60000



Contour interval 100 feet
Datum is mean sea level

Polygonic projection. North American datum

To join Roosevelt, Fort McDowell, and Camelsback maps, use dotted projection corners.