

Blythe

CALIFORNIA—ARIZONA

1:100 000-scale metric
topographic map



30 X 60 MINUTE QUADRANGLE
SHOWING

- Contours and elevations in meters
- Highways, roads and other manmade structures
- Water features
- Woodland areas
- Geographic names



GEOLOGICAL SURVEY

1986

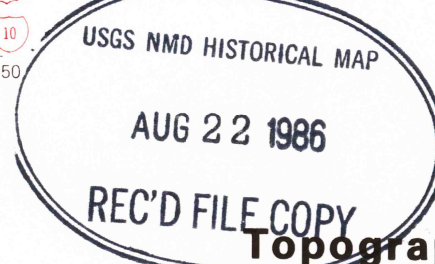
Produced by the United States Geological Survey
Compiled from USGS 1:24 000 and 1:62 500-scale topographic maps dated 1962-1983. Planimetry revised from aerial photographs taken 1981 and other source data. Revised information not field checked. Map edited 1986.
Projection and 10 000-meter grid, zone 11.
Universal Transverse Mercator
25 000-foot grid ticks based on Arizona coordinate system, west zone and California coordinate system, zone 6
1927 North American Datum
To place on the predicted North American Datum 1983 move the projection lines 2 meters south and 73 meters east
There may be private inholdings within the boundaries of the National or State reservations shown on this map

CONTOUR INTERVAL 50 METERS
NATIONAL GEODETIC VERTICAL DATUM OF 1929

THIS MAP COMPLIES WITH NATIONAL MAP ACCURACY STANDARDS

CONVERSION TABLE		DECLINATION DIAGRAM		ADJOINING MAPS			
Meters	Feet			1	2	3	
1	3.2808	<p>UTM grid convergence (GN and 1983 magnetic declination (MD) at center of map. Diagram is approximate</p>					
2	6.5617						
3	9.8425						
4	13.1234						
5	16.4042						
6	19.6850						
7	22.9659						
8	26.2467						
9	29.5276						
10	32.8084						
To convert meters to feet multiply by 3.2808				1 Sheep Hole Mts. 2 Parker 3 Alamo Lake 4 Eagle Mountains 5 Salome 6 Saline Sea 7 Tripe Mountains 8 Little Horn Mts.			
To convert feet to meters multiply by 0.3048							

FOR SALE BY U. S. GEOLOGICAL SURVEY, DENVER, COLORADO 80225
OR RESTON, VIRGINIA 22092



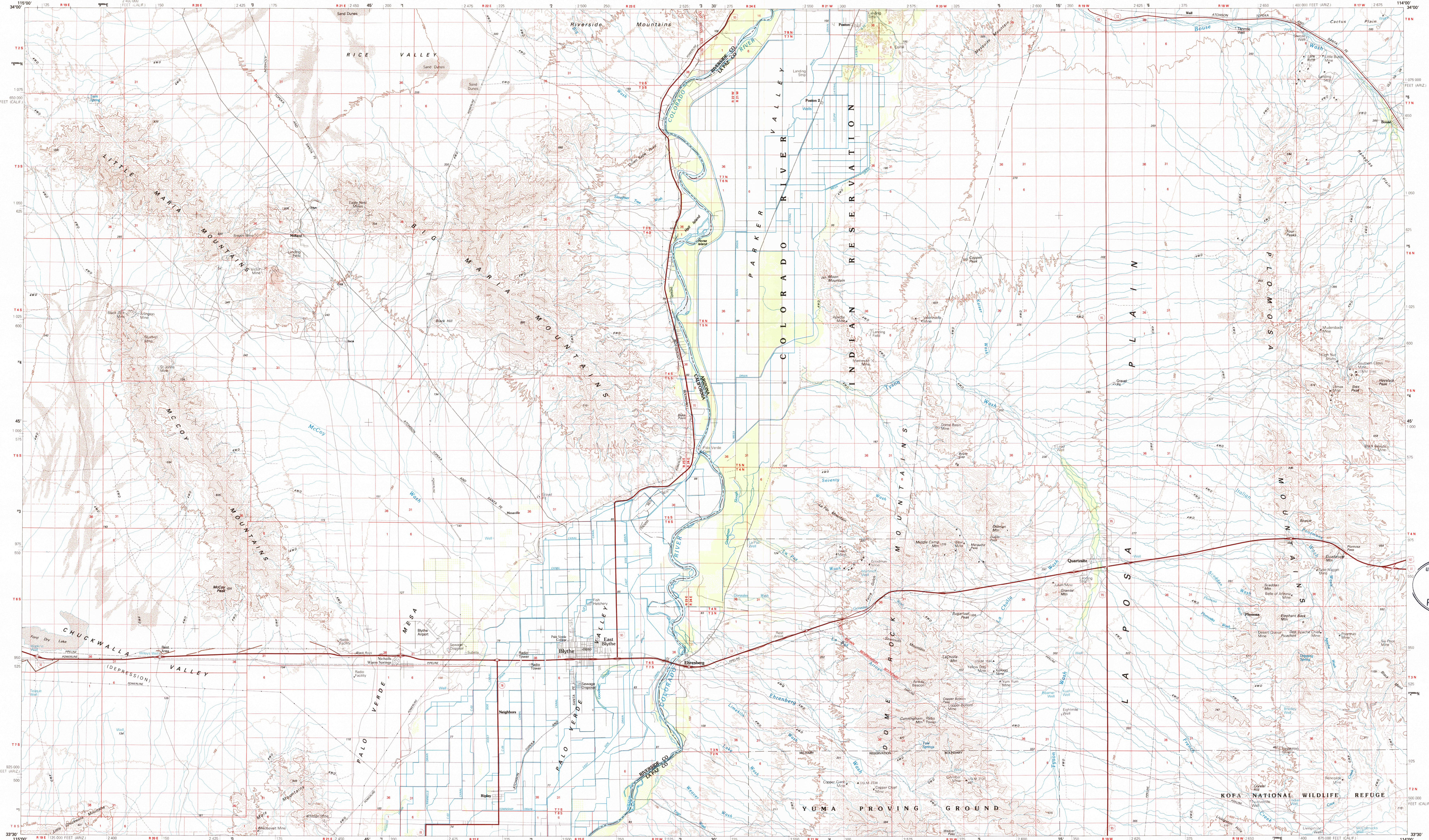
Topographic Map Symbols

Primary highway, hard surface	
Secondary highway, hard surface	
Light duty road, principal street, hard or improved surface	
Other road or street; trail	
Railroad: standard gauge; narrow gauge	
Bridge; overpass; underpass	
Tunnel: road; railroad	
Built up area; locality; elevation	
Airport; landing field; landing strip	
National boundary	
State boundary	
County boundary	
National or State reservation boundary	
Line grant boundary	
U. S. public lands survey; range, township, section	
Range, township; section line; protected	
Power transmission line; pipeline	
Dam; dam with lock	
Cemetery; building	
Wells; water well; spring	
Mine shaft; adit or cave; mine, quarry; gravel pit	
Campground; picnic area; U. S. location monument	
Railroad; cliff dwelling	
Distorted surface: strip mine, lava, sand	
Contours: index; intermediate, supplementary	
Bathymetric contours: index, intermediate	
Stream, lake; perennial; intermittent	
Rapids, large and small; falls, large and small	
Area to be submerged; marsh, swamp	
Land subject to controlled inundation; woodland	
Sand, mangrove	
Orchard; vineyard	

A pamphlet describing topographic maps is available on request

BLYTHE, CALIFORNIA—ARIZONA

30X60 MINUTE SERIES (TOPOGRAPHIC)



INTERIOR—GEOLOGICAL SURVEY, RESTON, VIRGINIA—1986

KILOMETERS 1 2 3 4 5 6 7 8 9 10 11 12 13 14 15 16 17 18 19 20

SCALE 1:100 000

1 CENTIMETER ON THE MAP REPRESENTS 1 KILOMETER ON THE GROUND
CONTOUR INTERVAL 50 METERS

5000 0 10000 20000 30000 40000 50000 60000 70000 FEET

BLYTHE, CALIFORNIA—ARIZONA

33114-E1-TM-100