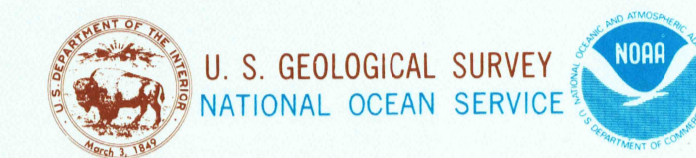


# Covelo CALIFORNIA

1:100 000-scale metric topographic-bathymetric map



- 30 X 60 MINUTE QUADRANGLE SHOWING**
- Contours and elevations in meters
  - Highways, roads and other manmade structures
  - Water features
  - Woodland areas
  - Geographic names
  - Bathymetric contours in meters



1981

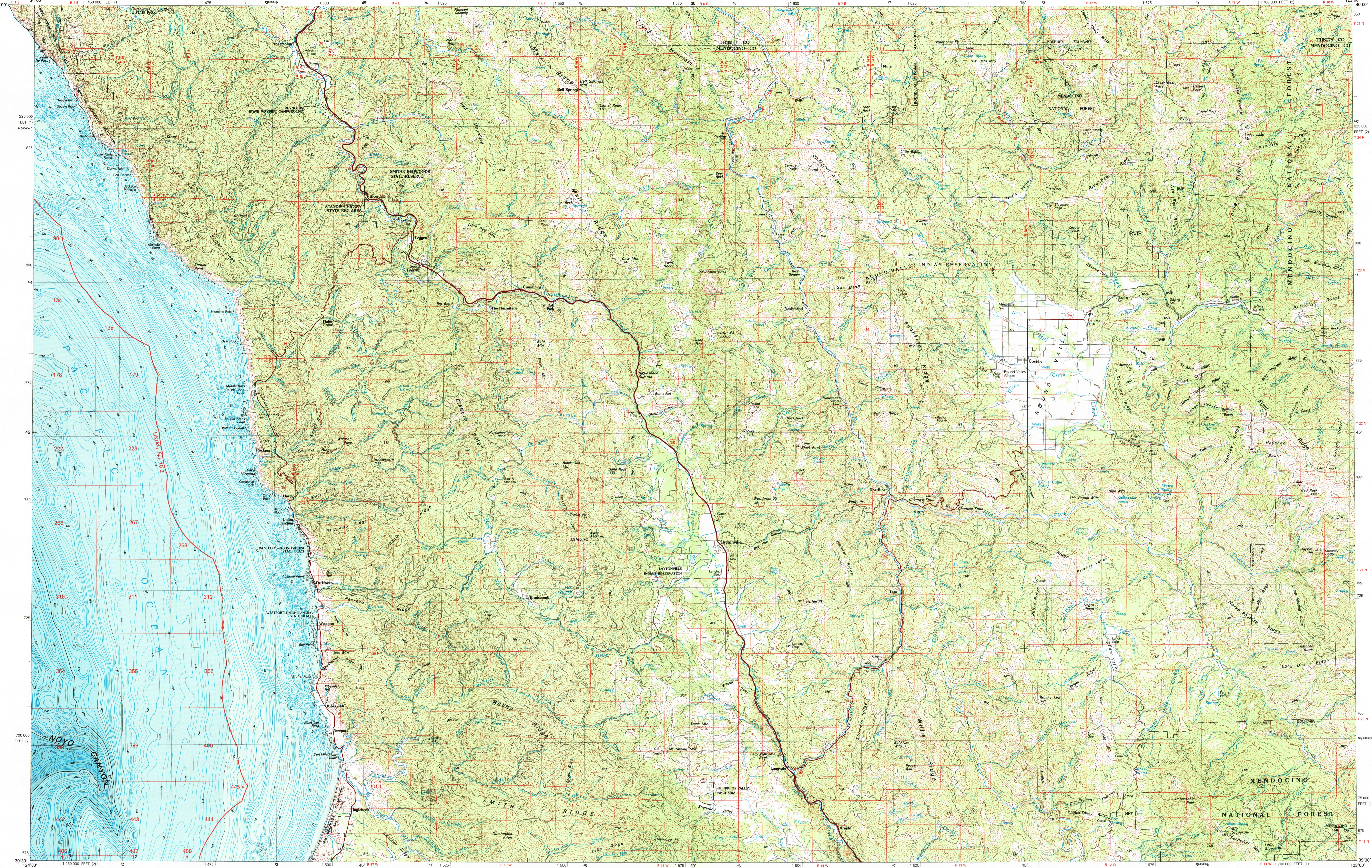
Produced by the Geological Survey and the National Ocean Service  
 Compiled from USGS 1:24 000-scale topographic maps dated 1966-1970  
 Bathymetry compiled by the National Ocean Service from tide-coordinated hydrographic surveys. This information is not intended for navigational purposes.  
 Most land areas shown in green and brown. High water (heavy solid line) compiled by NOS from tide-coordinated aerial photography. Apparent shoreline (thin solid line) shown by light solid line.  
 Projection and 10 000-meter grid: Zone 10 Universal Transverse Mercator 25 000-foot grid: based on California coordinate system, zones 2 and 1 1983 North American Datum.  
 To place on the preferred North American Datum 1983 move the projection lines 18 meters north and 96 meters east.  
 Offshore protection survey data, shown in red, furnished by the Minerals Management Service. Heavy blue outline lines of Outer Continental Shelf Official Protection Diagram November 2, 1976. The protection on this map is not for Federal leasing purposes. For such purposes, refer to OCS Official Protection Diagram available from the Minerals Management Service.  
 Limited revision and amendments added 1988.  
 Contour and line as omitted because of insufficient data. There may be private buildings within the boundaries of National or State reservations shown on this map.  
 CONTOUR INTERVAL: 40 METERS  
 BATHYMETRIC CONTOUR INTERVAL: 5 METERS  
 NATIONAL GEODETIC VERTICAL DATUM OF 1983  
 BATHYMETRIC CONTOUR INTERVAL: 10 METERS TO 50 METERS  
 GEOMETRIC CONTOUR INTERVAL: 10 METERS  
 CONTOUR-DRAWING IS MEAN LOWER LOW WATER  
 THE RELATIONSHIP BETWEEN THE TWO INTERVALS IS VARIABLE  
 BATHYMETRIC SURVEY DATA COMPILED WITH  
 POSITIVE TIDE-GAUGE OBSERVATION AND SPECIAL  
 PUBLICATION ON ACCURACY STANDARD AND/OR STANDARD  
 DATE AS OF THE DATE OF THE SURVEY

Meters	Feet
1	3.2808
2	6.5617
3	9.8425
4	13.1232
5	16.4040
6	19.6848
7	22.9656
8	26.2464
9	29.5272
10	32.8080

To convert meters to feet multiply by 3.2808  
 To convert feet to meters multiply by 0.3048

### Topographic Map Symbols

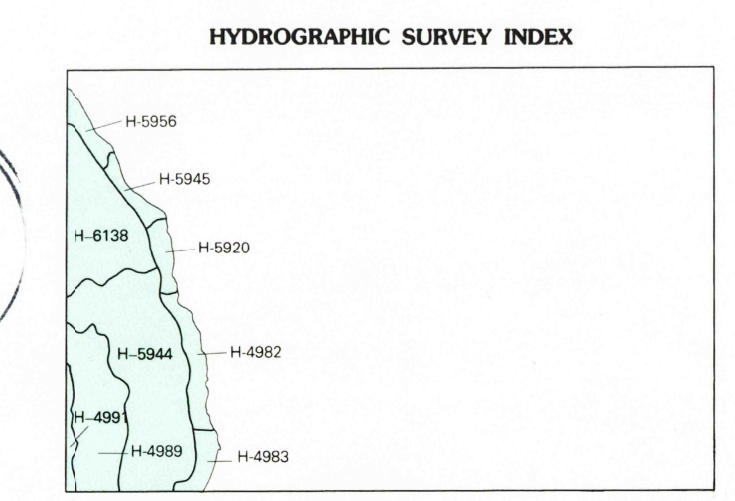
- Primary highway, hard surface
- Secondary highway, hard surface
- Light duty road, principal street, hard or improved surface
- Other road or street, trail
- Route marker: Interstate, U.S. State
- Railroad: standard gage, narrow gage
- Bridge: overpass, underpass
- Tunnel: road, railroad
- Built up area: locality, elevation
- Airport: landing field, landing strip
- National boundary
- State boundary
- County boundary
- National or State reservation boundary
- Land grant boundary
- U.S. public lands survey: range, township, section
- Range, township, section line: proposed
- Power transmission line: pipeline
- Dam: dam with lock
- Cemetery: building
- Windmill: water well, spring
- Mine shaft, adit or cave, mine, quarry, gravel pit
- Campground: picnic area, U.S. location monument
- Ruin: cliff dwelling
- Distorted surface: strip mine, lava, sand
- Contours: index, intermediate, supplementary
- Bathymetric contours: index, intermediate
- Stream: lake: perennial, intermittent
- Rapids, large and small; falls, large and small
- Area to be submerged: marsh, swamp
- Land subject to controlled inundation: woodland
- Soak: mangrove
- Orchard: vineyard



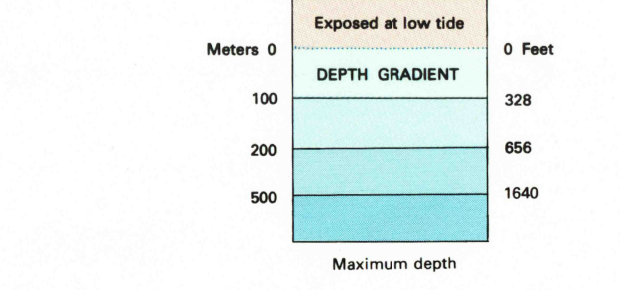
SCALE 1:100 000  
 1 CENTIMETER ON THE MAP REPRESENTS 1 KILOMETER ON THE GROUND  
 CONTOUR INTERVAL 40 METERS  
 SUPPLEMENTARY CONTOUR INTERVAL 10 METERS

**HYDROGRAPHIC SURVEY INFORMATION**

SURVEY NUMBER	SURVEY DATE	SURVEY SCALE	SURVEY LINE SPACING (NAUTIC MILES)
H-4082	1920	1:20,000	03.02
H-4083	1920	1:20,000	02.24
H-4084	1920	1:20,000	01.19
H-4085	1920	1:20,000	01.12
H-4086	1920	1:20,000	01.10
H-4087	1920	1:20,000	01.10
H-4088	1920	1:20,000	01.10
H-4089	1920	1:20,000	01.10
H-4090	1920	1:20,000	01.10



USGS AND HISTORICAL MAP  
 AUG 11 1989  
 REC'D FILE COPY



COVELO, CALIFORNIA  
 39123-E1-TB-100  
 1981  
 BATHYMETRY ADDED 1988

Photographic copies of this map and other maps may be obtained at the cost of reproduction by addressing the Director, NCG 243, National Ocean Service, National Oceanic and Atmospheric Administration, Rockville, Maryland 20852