

DELANO, CALIFORNIA

30X60 MINUTE SERIES (TOPOGRAPHIC)

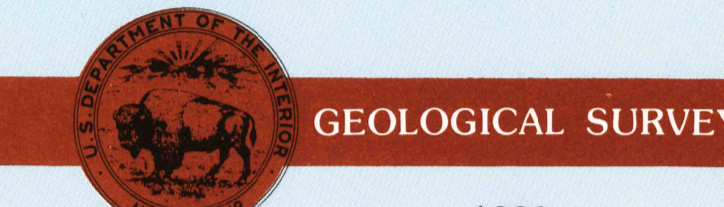
Delano CALIFORNIA

1:100 000-scale metric topographic map



30 X 60 MINUTE QUADRANGLE SHOWING

- Contours and elevations in meters
- Highways, roads and other manmade structures
- Water features
- Woodland areas
- Geographic names



Produced by the United States Geological Survey
 Compiled from USGS 1:24 000-scale topographic maps dated 1953-1982. Planimetry revised from aerial photographs taken 1984 and other source data. Revised information not field checked. Map edited 1993.
 1927 North American Datum (NAD 27). Projection and 10 000-meter-grid: Universal Transverse Mercator, zone 11 25 000-foot ticks: California coordinate system, zones 5 and 4
 The difference between NAD 27 and North American Datum of 1983 (NAD 83) is too small to show at this scale. The values of the shift between the datums for 7.5-minute intersections are given in USGS Bulletin 1875.
 There may be private subdivisions within the boundaries of the National or State reservations shown on this map.

CONTOUR INTERVAL 20 METERS
 SUPPLEMENTARY CONTOUR INTERVAL 10 METERS
 NATIONAL GEODETIC DATUM OF 1929
 ELEVATIONS SHOWN TO THE NEAREST METER

THIS MAP COMPLIES WITH NATIONAL MAP ACCURACY STANDARDS
 FOR SALE BY U.S. GEOLOGICAL SURVEY
 DENVER, COLORADO 80225, OR RESTON, VIRGINIA 22092

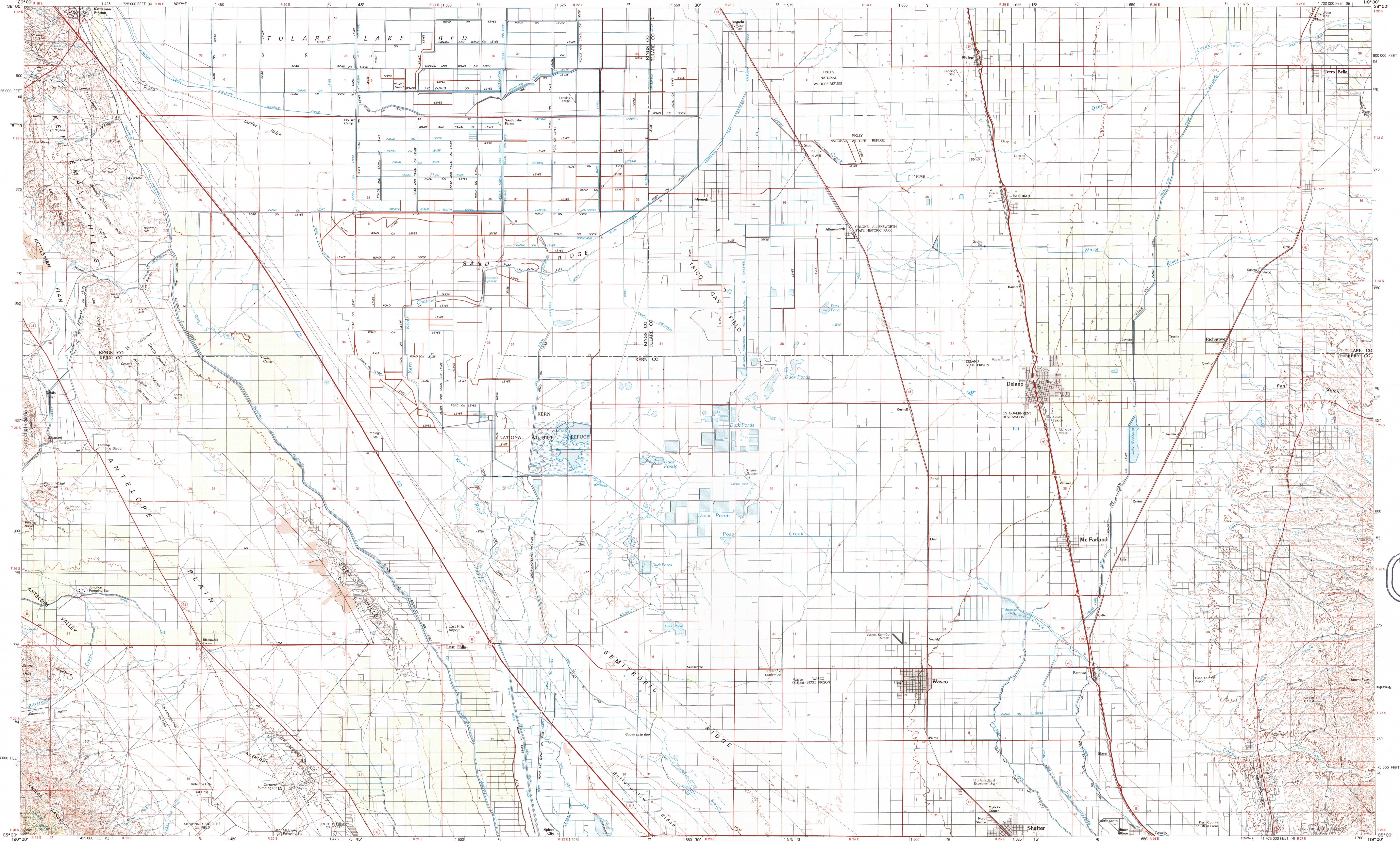
CONVERSION TABLE		DECLINATION DIAGRAM		ADJOINING MAPS	
Meters	Feet			1	2
1	3.2808			4	5
2	6.5617			6	7
3	9.8425			8	8
4	13.1234				
5	16.4042				
6	19.6850				
7	22.9659				
8	26.2467				
9	29.5275				
10	32.8084	<p>ITM grid convergence (EN) and 1983 magnetic declination (M) at center of map diagram is approximate.</p>			

USGS HISTORICAL MAP ARCHIVES
 OCT 0 6 1995
 REC'D FILE COPY

ISBN 0-607-11170-4
 9 780607 111705

Topographic Map Symbols

- Primary highway, hard surface
- Secondary highway, hard surface
- Light duty road, principal street, hard or improved surface
- Other road or street
- Route marker: Interstate, U.S.; State
- Railroad: standard gage; narrow gage
- Bridge: overpass; underpass
- Tunnel: road; railroad
- Built up area: locality: elevation
- Airport: landing field; landing strip
- National boundary
- State boundary
- County boundary
- National or State reservation boundary
- Land grant boundary
- U.S. public lands survey: range, township; section
- Range, township; section line: projected
- Power transmission line; pipeline
- Dam: dam with lock
- Cemetery; building
- Wellhead; water well; spring
- Mine shaft; adit or cave; mine; quarry; gravel pit
- Campground; picnic area; U.S. location monument
- Ruins; cliff dwelling
- Distorted surface: strip mine; lava; sand
- Contours: index; intermediate; supplementary
- Bathymetric contours: index; intermediate
- Stream, lake: perennial; intermittent
- Rapids; large and small; falls; large and small
- Area to be submerged; marsh; swamp
- Land subject to controlled inundation; woodland
- Sand; mangrove
- Other; viewless



SCALE 1:100 000
 1 CENTIMETER ON THE MAP REPRESENTS 1 KILOMETER ON THE GROUND
 CONTOUR INTERVAL 20 METERS
 SUPPLEMENTARY CONTOUR INTERVAL 10 METERS

KILOMETERS 1 0 1 2 3 4 5 6 7 8 9 10 11 12 13 14 15 16 17 18 19 20
 METERS 0 1000 2000 3000 4000 5000 6000 7000 8000 9000 10000 11000 12000 13000 14000 15000 16000 17000 18000 19000 20000

MILES 1 2 3 4 5 6 7 8 9 10 11 12 13 14 15 16 17 18 19 20

DELANO, CALIFORNIA
 35119-E1-TM-100
 1993

A pamphlet describing topographic maps is available on request