

LAKEPORT, CALIFORNIA

30 X 60 MINUTE SERIES (TOPOGRAPHIC)

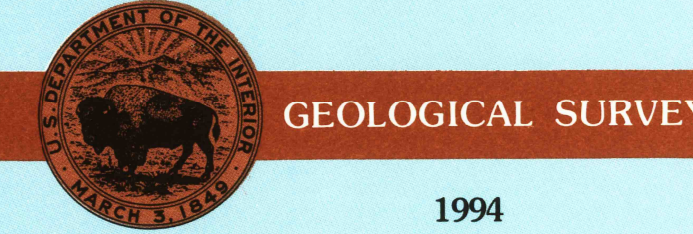
Lakeport CALIFORNIA

1:100 000-scale metric topographic map



30 X 60 MINUTE QUADRANGLE SHOWING

- Contours and elevations in meters
- Highways, roads and other manmade structures
- Water features
- Woodland areas
- Geographic names



Produced by the United States Geological Survey
 Compiled from USGS 1:24 000-scale topographic maps dated 1952-1989. Planimetry revised from aerial photographs taken 1987-88 and other source data. Revised information not field checked. Map edited 1994 North American Datum of 1927 (NAD 27). Projection and 10 000-meter grid. Universal Transverse Mercator, zone 10 25 000-foot ticks: California coordinate system, zone 2
 The values of the shift between NAD 27 and North American Datum of 1983 (NAD 83) for 7.5-minute intersections are obtainable from National Geospatial Survey NADCON software
 There may be private inholdings within the boundaries of the National or State reservations shown on this map
 Protracted land lines are dashed

CONTOUR INTERVAL 50 METERS
 SUPPLEMENTARY CONTOUR INTERVAL 5 METERS
 NATIONAL GEODETIC VERTICAL DATUM OF 1929
 ELEVATIONS SHOWN TO THE NEAREST METER

THIS MAP COMPLIES WITH NATIONAL MAP ACCURACY STANDARDS

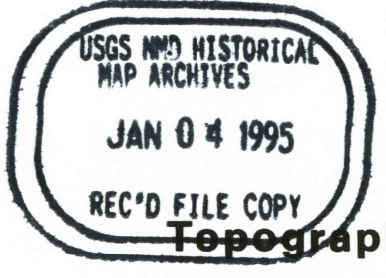
CONVERSION TABLE		DECLINATION DIAGRAM		ADJOINING MAPS			
Meters	Feet	Diagram		1	2	3	
1	3.2808			4	5		
2	6.5617			6	7	8	
3	9.8425						
4	13.1234						
5	16.4042						
6	19.6850						
7	22.9659						
8	26.2467						
9	29.5275						

To convert meters to feet multiply by 3.2808
 To convert feet to meters multiply by 0.3048

UTM grid convergence (GM) and 1984 magnetic declination (MD) at center of map
 Diagram is approximate

1 Covelo
 2 Willows
 3 Chico
 4 Ukiah
 5 Vicks City
 6 Point Arena
 7 Headlands
 8 Sacramento

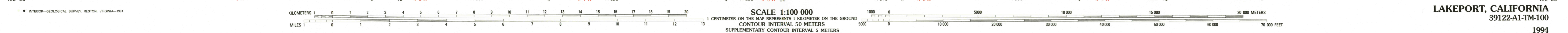
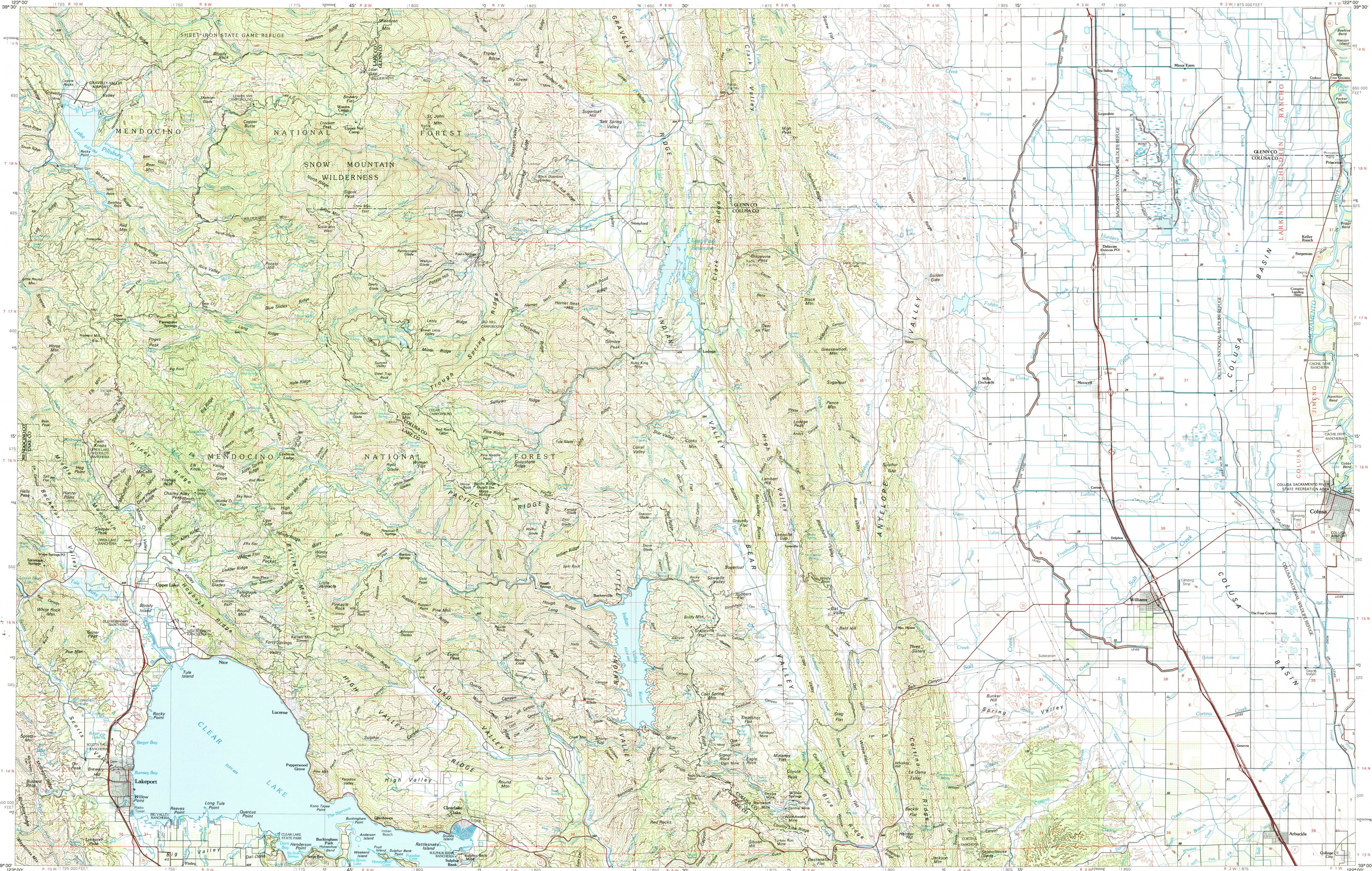
FOR SALE BY U. S. GEOLOGICAL SURVEY, DENVER, COLORADO 80225 OR RESTON, VIRGINIA 22092



Topographic Map Symbols

- Primary highway, hard surface
- Secondary highway, hard surface
- Light duty road, principal street, hard or improved surface
- Other road or street, red
- Route marker: interstate; U. S.; State
- Railroad: standard gage; narrow gage
- Bridge: overpass; underpass
- Tunnel: road; railroad
- Built up area, locality, elevation
- Airport, landing field, landing strip
- National boundary
- State boundary
- County boundary
- National or State reservation boundary
- Land grant boundary
- U. S. public lands survey: range, township; section
- Range, township; section line: protracted
- Power transmission line; pipeline
- Dam; dam with lock
- Cemetery, building
- Wellhead, water well, spring
- Mine shaft, adit or cave; mine, quarry, gravel pit
- Campground; picnic area; U. S. location monument
- Route, off dwelling
- Distorted surface: strip mine, levee, sand
- Contours: index; intermediate; supplementary
- Bathymetric contours: index; intermediate
- Stream, lake: perennial; intermittent
- Rapids, large and small; falls, large and small
- Area to be submerged; marsh, swamp
- Land subject to controlled inundation; woodland
- Swamp, mangrove
- Orchard; vineyard

A simplified descriptive topographic map is available on request



LAKEPORT, CALIFORNIA

39122-A1-TM-100

1994