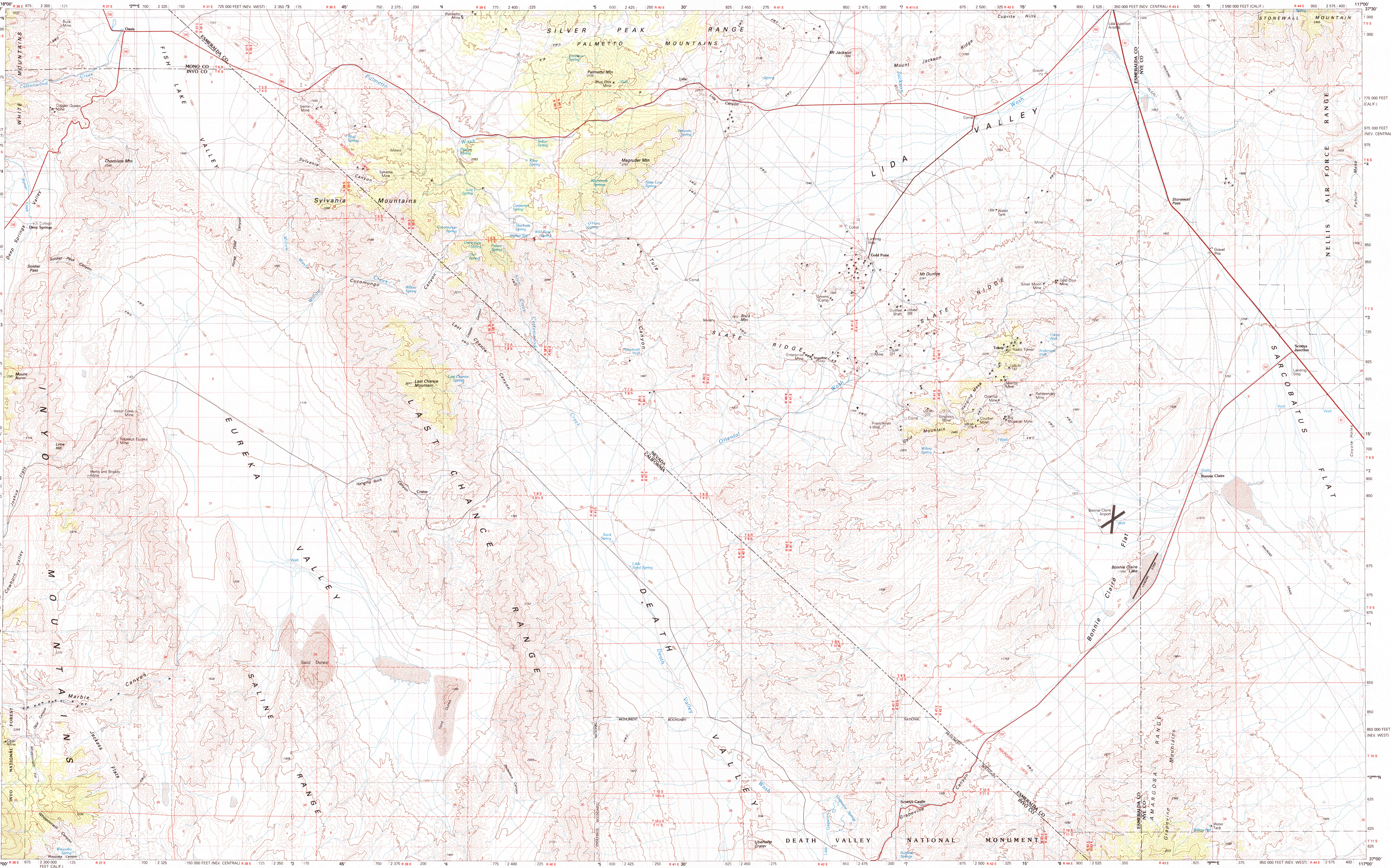


LAST CHANCE RANGE, CALIFORNIA-NEVADA

30X60 MINUTE SERIES (TOPOGRAPHIC)



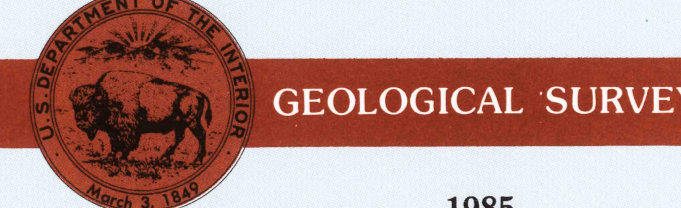
Last Chance Range CALIFORNIA-NEVADA

1:100 000-scale metric topographic map



30 X 60 MINUTE QUADRANGLE SHOWING

- Contours and elevations in meters
- Highways, roads and other manmade structures
- Water features
- Woodland areas
- Geographic names



1985

Produced by the United States Geological Survey in cooperation with the Nevada Bureau of Mines and Geology

Compiled from USGS 1:24 000 and 1:62 500-scale topographic maps dated 1957-1982. Planimetry revised from aerial photographs taken 1980 and other source data. Revised information not field checked. Map edited 1985

Projection and 10 000-meter grid, zone 11. Universal Transverse Mercator

25 000-foot grid ticks based on California coordinate system, zone 4 and Nevada coordinate system, west and central zones 1927 North American Datum

To place on the predicted North American Datum 1983 move the projection lines 10 meters north and 81 meters east

There may be private inholdings within the boundaries of the National or State reservations shown on this map

CONTOUR INTERVAL 50 METERS

NATIONAL GEODETIC VERTICAL DATUM OF 1929

THIS MAP COMPLIES WITH NATIONAL MAP ACCURACY STANDARDS

CONVERSION TABLE		DECLINATION DIAGRAM		ADJOINING MAPS		
Meters	Feet	GN	MN	1	2	3
1	3.2808		10° 367 MILES	1	2	3
2	6.5617			4	5	
3	9.8425			6	7	
4	13.1234			8		
5	16.4042					
6	19.6850					
7	22.9659					
8	26.2467					
9	29.5275					
10	32.8084					

To convert meters to feet multiply by 3.2808
To convert feet to meters multiply by 0.3048

UTM grid convergence (GN) and 100 magnetic declination (MN) center of map
Diagram is approximate

1 Benton Range
2 Goldfield
3 Chino Flat
4 Pahre Mesa
5 House Whitney
6 Saline Valley
7 Beatty

FOR SALE BY U.S. GEOLOGICAL SURVEY, DENVER, COLORADO 80225 OR RESTON, VIRGINIA 22092

Topographic Map Symbols

- Primary highway, hard surface
- Secondary highway, hard surface
- Light duty road, principal street, hard or improved surface
- Other road or street, trail
- Route marker: Interstate, U. S., State
- Railroad: standard gage, narrow gage
- Bridge, overpass, underpass
- Tunnel, road, railroad
- Built up area, locality, elevation
- Airport, landing field, landing strip
- National boundary
- State boundary
- County boundary
- National or State reservation boundary
- Land grant boundary
- U. S. public lands survey: range, township, section
- Range, township, section line: protracted
- Power transmission line: pipeline
- Dam: dam with spillway
- Cemetery, building
- Well: water well, spring
- Mine shaft: adit or cave; mine, quarry; gravel pit
- Campground, picnic area; U. S. location monument
- Ruins; cliff dwelling
- Disturbed surface: strip mine, lava, sand
- Contours: index; intermediate; supplementary
- Bathymetric contours: index; intermediate
- Stream, lake: perennial; intermittent
- Rapids, large and small; falls, large and small
- Area to be submerged: marsh, swamp
- Land subject to controlled inundation; woodland
- Scrub; mangrove
- Orchard; vineyard