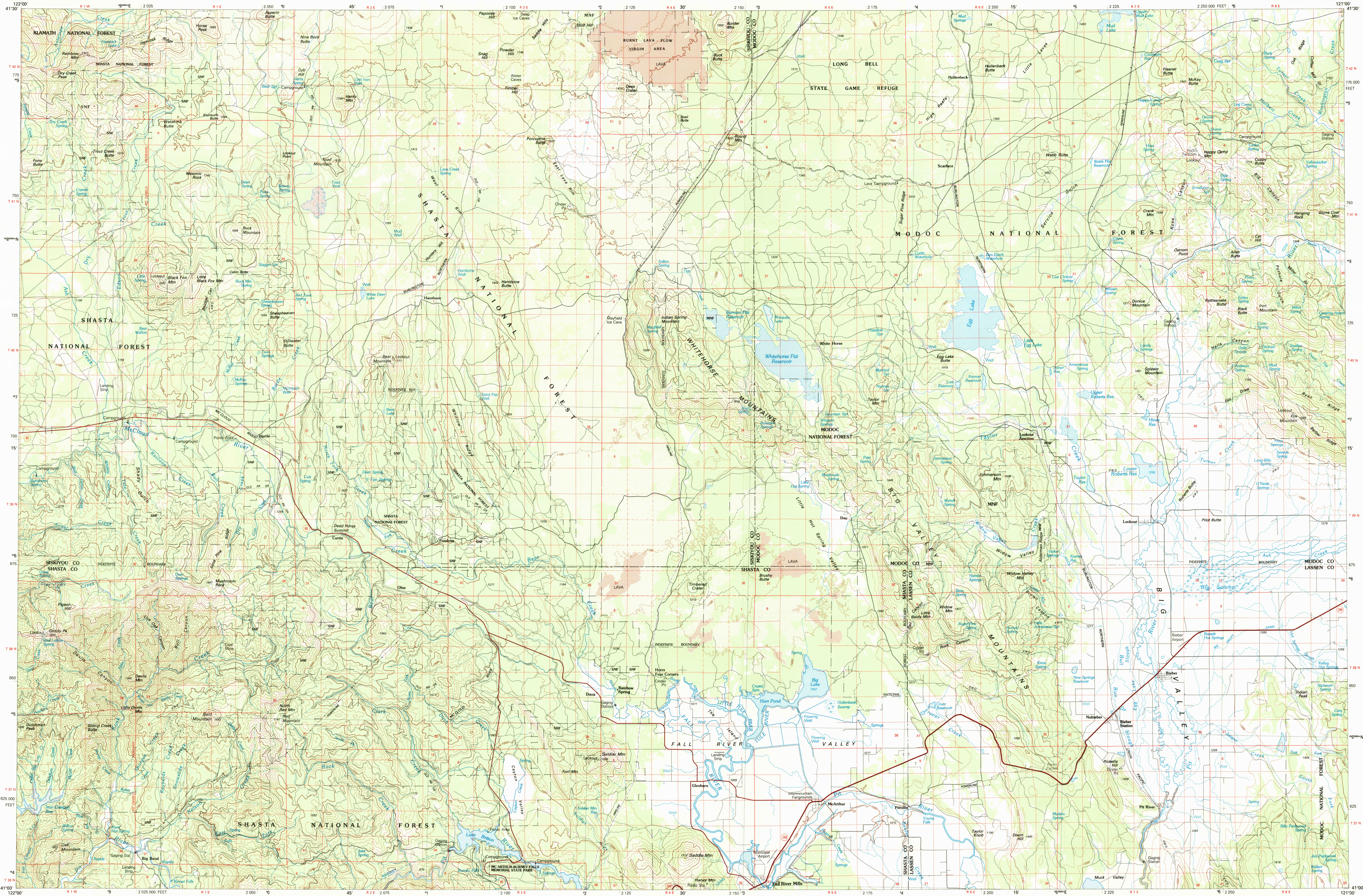


MC ARTHUR, CALIFORNIA

30X60 MINUTE SERIES (TOPOGRAPHIC)



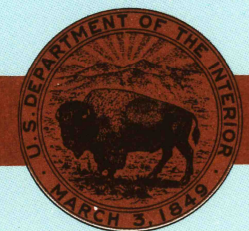
McArthur
CALIFORNIA

1:100 000-scale *metric*
topographic map



30 X 60 MINUTE QUADRANGLE SHOWING

- Contours and elevations in meters
- Highways, roads and other manmade structures
- Water features
- Woodland areas
- Geographic names



GEOLOGICAL SURVEY

198

Produced by the United States Geological Survey

Compiled from USGS 1:62 500-scale topographic maps dated 1961-1962. Planimetry revised from aerial photographs taken 1981 and other source data. Revised information not field checked. Map edited 1984

Projection and 10 000-meter grid, zone 10,
Universal Transverse Mercator
25 000-foot grid ticks based on California coordinate system,
zone 1. 1927 North American Datum
To place on the predicted North American Datum 1983
move the projection lines 18 meters north and 91 meters east
There may be private inholdings within the boundaries of
the National or State reservations shown on this map

CONTOUR INTERVAL 50 METERS
NATIONAL GEODETIC VERTICAL DATUM

THIS MAP COMPLIES WITH NATIONAL MAP ACCURACY STANDARDS

CONVERSION TABLE		DECLINATION DIAGRAM		ADDING MAPS			
Meters	Feet			1	2	3	5
1	3.2808			1	2	3	5
2	6.5617			4	8	12	20
3	9.8425			6	7	8	
4	13.1234						
5	16.4043						
6	19.6850						
7	22.9659						
8	26.2467						
9	29.5276						
10	32.8084						
To convert meters to feet multiply by 3.2808		UTM grid convergence (GN and 1984 magnetic declination) (M) at center of map Diagram is approximate		1 Yreka 2 Tululeke 3 Cedarville 4 Mount Shasta 5 Ahirans 6 Redding 7 Barney 8 Eagle Lake			
To convert feet to meters multiply by 0.3048							

FOR SALE BY U. S. GEOLOGICAL SURVEY, DENVER, COLORADO 8022
OR RESTON, VIRGINIA 22092

RETURN TO:
NHD HISTORICAL MAP ARCHIVES
USGS NATIONAL CENTER, MS-52
RESTON, VA 22092

Topographic Map Symbols

- | | |
|-------------------------------------------------------------|--|
| Primary highway, hard surface | |
| Secondary highway, hard surface | |
| Light duty road, principal street, hard or improved surface | |
| Light duty road or street, trail | |
| Boundary marker: Interstate, U. S. State | |
| Boundary marker: standard gauge, narrow gauge | |
| Bridge, overpass, underpass | |
| Tunnel, road, railroad | |
| Built up area; locality, elevation | |
| Export, landing field, landing strip | |
| State boundary | |
| County boundary | |
| International or State reservation boundary | |
| and grant boundary | |
| U. S. public lands survey: range, township, section | |
| Range, township, section: line, protruded | |
| Transmission line, pipeline | |
| and dam with lock | |
| Cemetery; building | |
| Wetland; water well; spring | |
| Ice shaft; adit or cave; mine, quarry; gravel pit | |
| Deep channel; ponds area; U. S. location monument | |
| and dwelling | |
| Disturbed surface: strip mine, lava, lake | |
| Contours: index; intermediate; supplementary | |
| Mathematic contour: index; intermediate | |
| Drain; lake; perennial; intermittent | |
| Scrub; mangrove | |
| Orchard; vineyard | |

A pamphlet describing topographic maps is available on request.

MC ARTHUR, CALIFORNIA
41121-A1-TM-100

1984