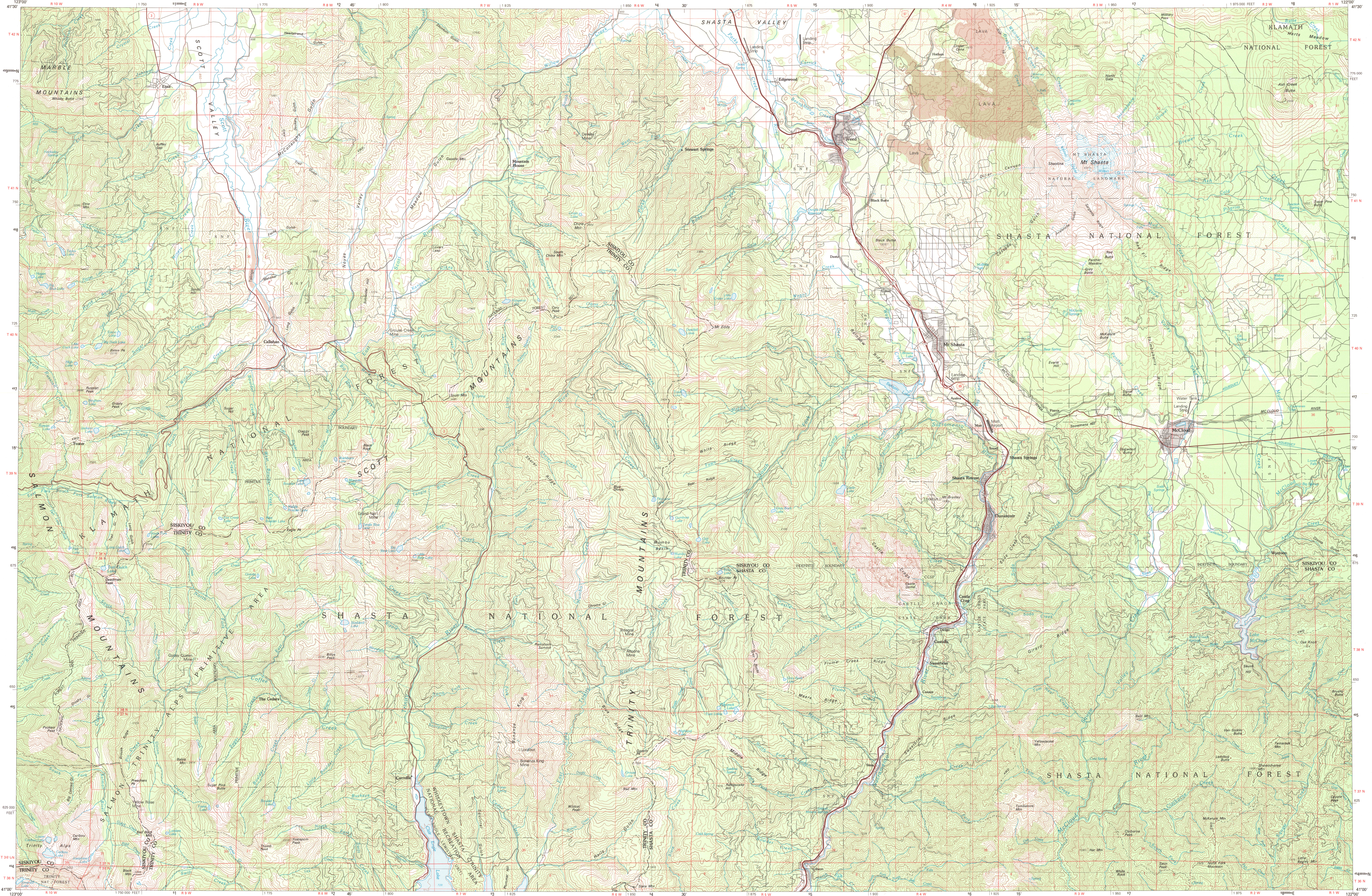


MOUNT SHASTA, CALIFORNIA

30x60 MINUTE SERIES (TOPOGRAPHIC)

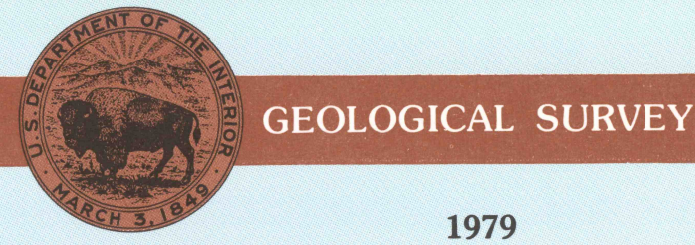


1:100 000-scale metric topographic map of Mount Shasta CALIFORNIA



30 X 60 MINUTE QUADRANGLE SHOWING

- Contours and elevations in meters
- Highways, roads and other manmade structures
- Water features
- Woodland areas
- Geographic names



Produced by the United States Geological Survey
 Compiled from USGS 1:62 500-scale topographic maps dated 1954-55. Planimetry revised from aerial photographs taken 1974-75, and other source data. Revised information not field checked. Map edited 1979.
 Projection and 10 000-meter grid, zone 10, Universal Transverse Mercator.
 25 000-foot grid ticks based on California coordinate system, zone 1.
 1927 North American Datum.
 The difference between 1927 North American Datum and North American Datum of 1983 (NAD 83) for 7.5 minute intersections is given in USGS Bulletin 1875.
 There may be private inholdings within the boundaries of the National or State reservations shown on this map.

CONTOUR INTERVAL 50 METERS NATIONAL GEODETIC VERTICAL DATUM OF 1929

THIS MAP COMPLIES WITH NATIONAL MAP ACCURACY STANDARDS

| CONVERSION TABLE | | DECLINATION DIAGRAM | ADJOINING MAPS | | |
|------------------|---------|---------------------|----------------|---|---|
| Meters | Feet | | 1 | 2 | 3 |
| 1 | 3.2808 | | 1 | 2 | 3 |
| 2 | 6.5617 | | 4 | 5 | |
| 3 | 9.8425 | | 6 | 7 | 8 |
| 4 | 13.1234 | | | | |
| 5 | 16.4042 | | | | |
| 6 | 19.6850 | | | | |
| 7 | 22.9659 | | | | |
| 8 | 26.2467 | | | | |
| 9 | 29.5276 | | | | |
| 10 | 32.8084 | | | | |

To convert meters to feet multiply by 3.2808
 To convert feet to meters multiply by 0.3048

UTM grid convergence (GN) and 1979 magnetic declination (M) at center of map
 Diagram is approximate

1 Happy Camp
 2 Yuba
 3 Tule Lake
 4 Hoopa
 5 McArthur
 6 New Fork
 7 Redding
 8 Burney

FOR SALE BY U. S. GEOLOGICAL SURVEY, DENVER, COLORADO 80225 OR RESTON, VIRGINIA 22092

Topographic Map Symbols

- Primary highway, hard surface
- Secondary highway, hard surface
- Light duty road, principal street, hard or improved surface
- Other road or street; trail
- Route marker; international, U. S. State
- Railroad; standard gage; narrow gage
- Bridge; overpass; underpass
- Tunnel; road; railroad
- Built up area; locality; elevation
- Airport; landing field; landing strip
- National boundary
- State boundary
- County boundary
- National or State reservation boundary
- Land grant boundary
- U. S. public lands survey; range, township; section
- Range, township; section line; guaranteed
- Power transmission line; pipeline
- Dam; dam with lock
- Cemetery; building
- Windmill; water well; spring
- Mine shaft; salt or cave; mine, quarry; gravel pit
- Campground; picnic area; U. S. location monument
- Ruin; cliff dwelling
- Distorted surface; strip mine, lava; sand
- Contours; index; intermediate; supplementary
- Bathymetric contours; index; intermediate
- Shoem; lake; perennial; intermittent
- Rapids; large and small; falls; large and small
- Area to be submerged; marsh, swamp
- Land subject to controlled inundation; woodland
- Scrub; mangrove
- Orchard; vineyard