


PLACERVILLE, CALIFORNIA

30 X 60 MINUTE SERIES (TOPOGRAPHIC)

USGS
science for a changing world

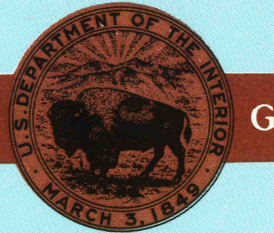
Placerville

CALIFORNIA
1:100 000-scale metric
topographic map



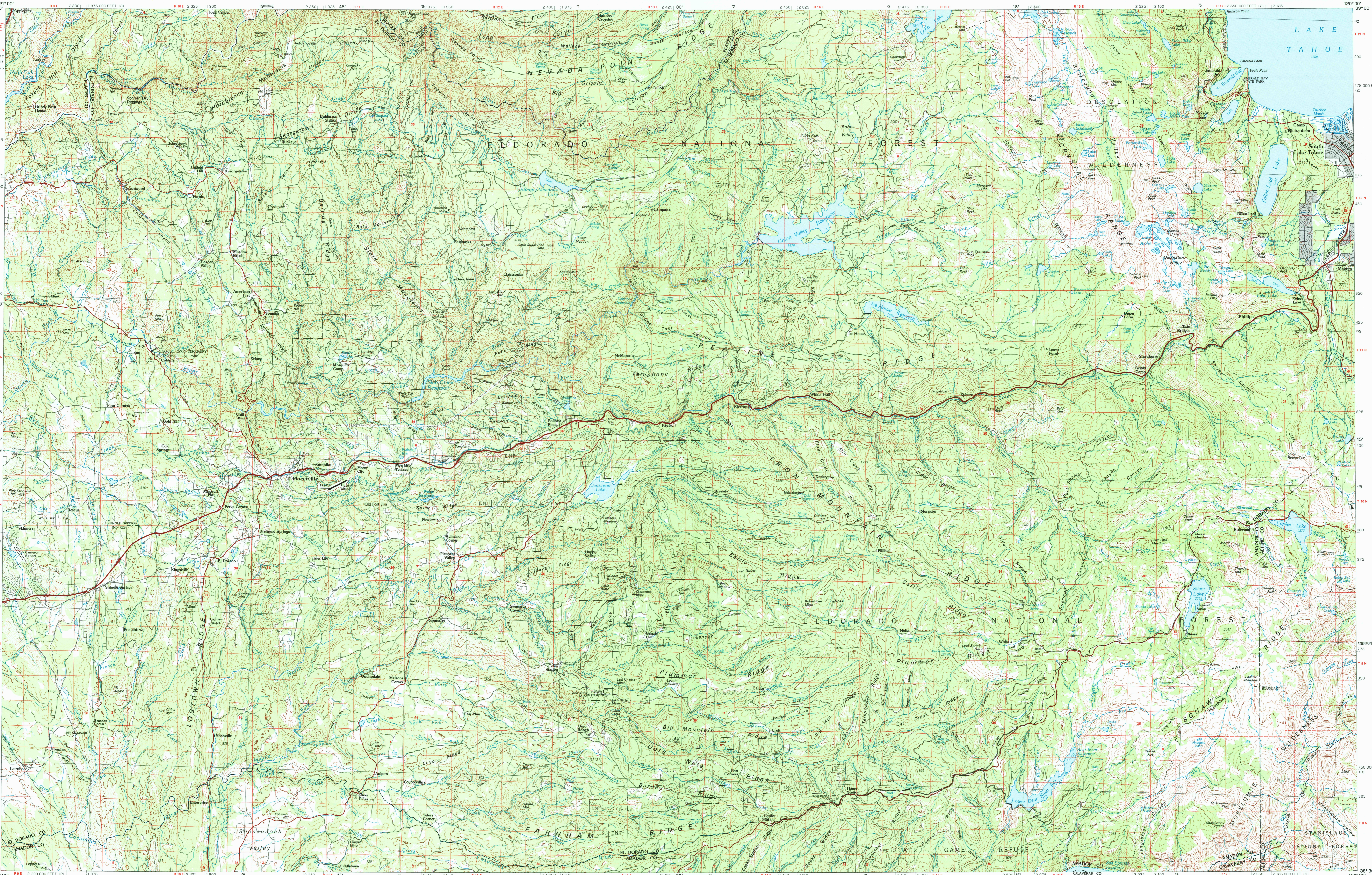
30 X 60 MINUTE QUADRANGLE SHOWING

- Contours and elevations in meters
- Highways, roads and other manmade structures
- Water features
- Woodland areas
- Geographic names



GEOLOGICAL SURVEY

1976
PHOTOINSPECTED 1988



Produced by the United States Geological Survey
Compiled from USGS 1:24 000-scale topographic maps dated 1949-1974. Planimetry revised from aerial photographs taken 1976 and other source data. Revised information not field checked. Map edited 1976
North American Datum of 1927 (NAD 27). Projection and 10 000-meter grid. Universal Transverse Mercator, zone 10
25 000-foot ticks: California coordinate system, zones 2 and 3

The values of the shift between NAD 27 and North American Datum of 1983 (NAD 83) for 7.5-minute intersections are obtainable from National Geodetic Survey NADCON software
There may be private inholdings within the boundaries of the National or State reservations shown on this map
Protracted land lines are dashed
Map photoinspected using 1987-88 photographs
No major culture or drainage changes found

CONTOUR INTERVAL 50 METERS
NATIONAL GEODETIC VERTICAL DATUM OF 1929
ELEVATIONS SHOWN TO THE NEAREST METER

THIS MAP COMPLES WITH NATIONAL MAP ACCURACY STANDARDS
FOR SALE BY U.S. GEOLOGICAL SURVEY,
P.O. BOX 25286, DENVER, COLORADO, 80225

CONVERSION TABLE		DECLINATION DIAGRAM		ADJOINING MAPS	
Meters	Feet	MAGNETIC		1	2
1	3.2808	↓		1	3
2	6.5617	↓		4	5
3	9.8425	↓		6	7
4	13.1234	↓		8	
5	16.4042	↓			
6	19.6850	↓			
7	22.9659	↓			
8	26.2467	↓			
9	29.5275	↓			
10	32.8084	↓			

To convert meters to feet multiply by 3.2808
To convert feet to meters multiply by 0.3048

UTM grid convergence (GM) and 1976 magnetic declination (MD) at center of map
Diagram is approximate

1 Yuba City
2 Truckee
3 Carson City
4 Sacramento
5 South Valley
6 Lead
7 San Andreas
8 Bridgeport

RECEIVED
MAY 31 2001
HISTORICAL MAP ARCHIVES

Topographic Map Symbols

Primary highway, hard surface	
Secondary highway, hard surface	
Light duty road, principal street, hard or improved surface	
Other road or street, trail	
Road marker: Interstate, U. S., State	
Railroad: standard gage; narrow gage	
Bridge: overpass; underpass	
Tunnel: road; railroad	
Built up area; locality; elevation	
Airport: landing field; landing strip	
National boundary	
State boundary	
County boundary	
National or State reservation boundary	
Land grant boundary	
U. S. public lands survey: range, township; section	
Range, township; section line: protracted	
Power transmission line; pipeline	
Dam; dam with lock	
Cemetery; building	
Wellhead; water well; spring	
Mine shaft; adit or cave mine; quarry; gravel pit	
Compounded; picnic area; U. S. location monument	
Ruins; cliff dwelling	
Distorted surface: strip mine, lava, sand	
Contours: index, intermediate, supplementary	
Bathymetric contours: index, intermediate	
Stream, lake: perennial; intermittent	
Rapids, large and small; falls, large and small	
Area to be submerged; marsh, swam	
Land subject to controlled inundation; woodland	
Swamp; mangrove	
Orchard; vineyard	