

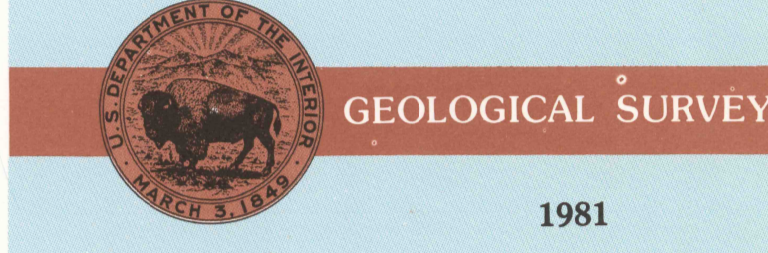
POINT ARENA, CALIFORNIA

30X60 MINUTE SERIES (TOPOGRAPHIC)

1:100 000-scale metric topographic map of Point Arena CALIFORNIA



- 30 X 60 MINUTE QUADRANGLE SHOWING
- Contours and elevations in meters
 - Highways, roads and other manmade structures
 - Water features
 - Woodland areas
 - Geographic names



Produced by the United States Geological Survey
 Compiled from USGS 1:24 000 and 1:62 500-scale topographic maps dated 1960-1978. Planimetry revised from aerial photographs taken 1976-77 and other source data. Revised information not field checked. Map edited 1981.
 Projection and 10 000-meter grid, zone 10, Universal Transverse Mercator
 25 000-foot grid ticks based on California coordinate system, zone 1, 1927 North American Datum
 To place on the predicted North American Datum 1983 move the projection lines 17 meters north and 96 meters east
 These may be private inholdings within the boundaries of the National or State reservations shown on this map
 Offshore protection survey data, printed in red, compiled by the Bureau of Land Management. Heavy lines indicate limits of BLM Outer Continental Shelf Official Protection Diagrams dated 1976. The projections on this map are not for Federal Leasing purposes; for such purposes, refer to the 1:250 000-scale OCS Official Protection Diagrams available from the Bureau of Land Management

CONTOUR INTERVAL 40 METERS
 NATIONAL GEODETIC VERTICAL DATUM OF 1929

CONVERSION TABLE		DECLINATION DIAGRAM		ADJOINING MAPS		
Meters	Feet	True	Magnetic	1	2	3
1	3.2808	0°	0°	1	2	3
2	6.5617	0°	0°	4	5	6
3	9.8425	0°	0°	7	8	
4	13.1234	0°	0°			
5	16.4042	0°	0°			
6	19.6851	0°	0°			
7	22.9659	0°	0°			
8	26.2468	0°	0°			
9	29.5276	0°	0°			
10	32.8085	0°	0°			

To convert meters to feet multiply by 3.2808
 To convert feet to meters multiply by 0.3048

UTM grid convergence (GN) and 1981 magnetic declination (MD) at center of map diagram is approximate

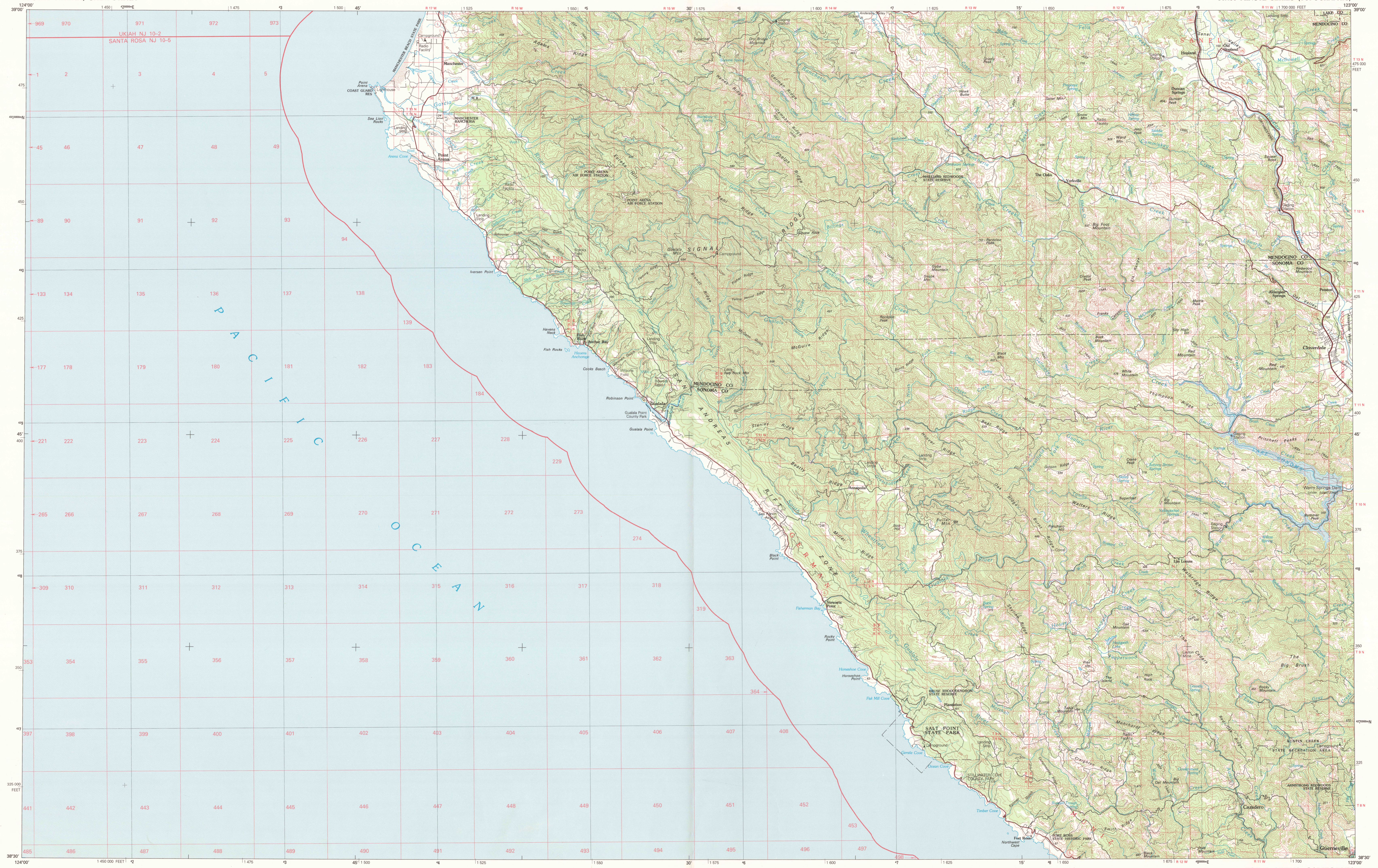
1	2	3
1 Ukiah	2 Lakport	3 Healdsburg
4 Ukiah	5 Lakport	6 Healdsburg
7 Ukiah	8 Lakport	9 Healdsburg
		10 Napa

FOR SALE BY U. S. GEOLOGICAL SURVEY, DENVER, COLORADO 80225 OR RESTON, VIRGINIA 22092

Topographic Map Symbols

- Primary highway, hard surface
- Secondary highway, hard surface
- Light duty road, principal street, hard or improved surface
- Other road or street, trail
- Route marker: Interstate, U. S.; State
- Railroad: standard gauge, narrow gauge
- Bridge: overpass, underpass
- Tunnel: road, railroad
- Built up area: locality, elevation
- Airport: landing field, landing strip
- National boundary
- State boundary
- County boundary
- National or State reservation boundary
- Land grant boundary
- U. S. public lands survey: range, township, section
- Range township; section line: protected
- Power transmission line; pipeline
- Dam; dam with lock
- Cemetery; building
- Windmill; water well; spring
- Mine shaft; oil or gas; mine, quarry; gravel pit
- Campground; picnic area; U. S. location monument
- Ruin; cliff dwelling
- Disturbed surface: strip mine, levee, sand
- Cartoon: rock, intermediate, supplementary
- Hydrologic contours: index, intermediate
- Stream, lake: perennial, intermittent
- Rapids, large and small; falls, large and small
- Area to be submerged; marsh, swamp
- Land subject to controlled inundation; woodland
- Sand; meadow
- Orchard; vineyard

A copyright describing topographic maps is available on request
 United States Dept. of the Interior
 Point Arena, CA
 1981



SCALE 1:100 000
 1 CENTIMETER ON THE MAP REPRESENTS 1 KILOMETER ON THE GROUND
 CONTOUR INTERVAL 40 METERS