


USGS
science for a changing world

Ridgecrest
CALIFORNIA

1:100 000-scale metric
topographic map

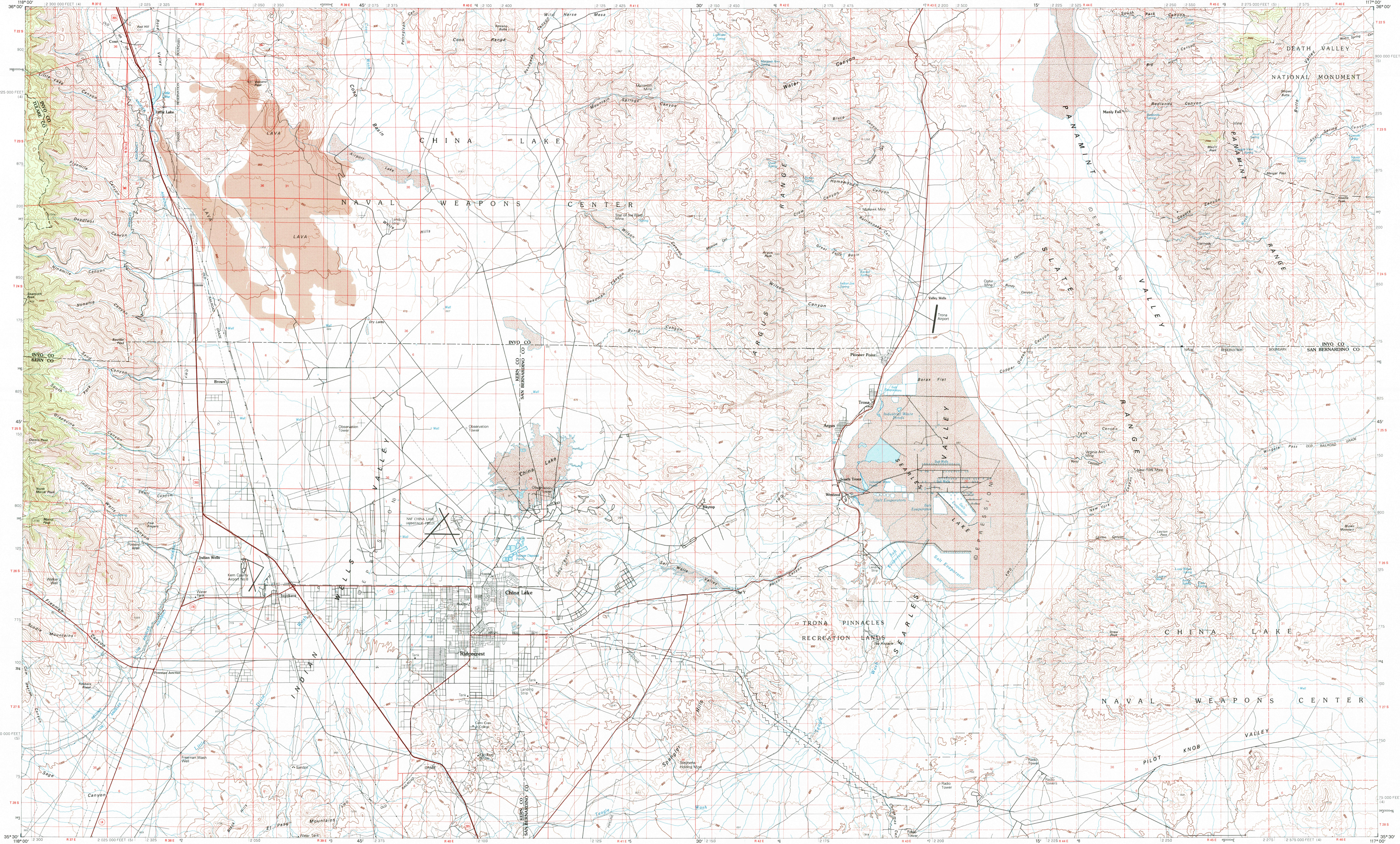


30 X 60 MINUTE QUADRANGLE
SHOWING

- Contours and elevations in meters
- Highways, roads and other manmade structures
- Water features
- Woodland areas
- Geographic names

GEOLOGICAL SURVEY

1993



Produced by the United States Geological Survey
Compiled from USGS 1:24 000 and 1:62 500-scale topographic maps dated 1949-1973. Planimetry revised from aerial photographs taken 1973-1989 and other source data. Revised information not field checked. Map edited 1993

1927 North American Datum (NAD 27). Projection and 10 000-meter grid: Universal Transverse Mercator, zone 11 25 000-foot ticks: California coordinate system, zones 5 and 4

The difference between NAD 27 and North American Datum of 1983 (NAD 83) is too small to show at this scale. The values of the shift between the datums for 7.5-minute intersections are given in USGS Bulletin 1875

There may be private landholdings within the boundaries of the National or State reservations shown on this map

Protracted land lines are dashed

Where omitted, land lines have not been established or are not shown due to insufficient data

CONTOUR INTERVAL 50 METERS
SUPPLEMENTARY CONTOUR INTERVAL 25 METERS
NATIONAL GEODETIC VERTICAL DATUM OF 1929
ELEVATIONS SHOWN TO THE NEAREST METER

THIS MAP COMPLEYS WITH NATIONAL MAP ACCURACY STANDARDS

FOR SALE BY U.S. GEOLOGICAL SURVEY,
P.O. BOX 25286, DENVER, COLORADO, 80225

CONVERSION TABLE		DECLINATION DIAGRAM		ADJOINING MAPS	
Meters	Feet	GN	MN	1	2
2	6.561			4	5
4	13.122			6	7
6	19.683			8	8
8	26.244				
10	32.805				
12	39.366				
14	45.927				
16	52.488				
18	59.049				
20	65.610				

To convert meters to feet multiply by 3.2808
To convert feet to meters multiply by 0.3048

UTM grid convergence (GN) and magnetic declination (MN) at center of map. Diagram is approximate

Number	Name
1	Three Rivers
2	Darwin Hills
3	Death Valley Junction
4	Indio Lake
5	Oakland Mrs.
6	Echocapt
7	Cuddeback Lake
8	Soda Mountains

RECEIVED
APR 3 0 2001

ISBN 0-607-11644-X
9 780607 116444

HISTORICALMAPARCHIVES

Topographic Map Symbols

Primary highway, hard surface	
Secondary highway, hard surface	
Light duty road, principal street, hard or improved surface	
Other road or street; trail	
Route marker: Interstate; U. S. State	
Railroad: standard gage; narrow gage	
Bridge: overpass; underpass	
Tunnel: road, railroad	
Built up area; locality; elevation	
Airport; landing field; landing strip	
National boundary	
State boundary	
County boundary	
National or State reservation boundary	
Land grant boundary	
U. S. public lands survey; range, township; section	
Range, township; section line; protracted	
Power transmission line; pipeline	
Dike; dam with lock	
Cemetery; building	
Wellhead; water well; spring	
Mine shaft; adit or cave; mine, quarry; gravel pit	
Campground; picnic area; U. S. location monument	
Ruin; cliff dwelling	
Disturbed surface: strip mine, lava, sand	
Contours: index; intermediate; supplementary	
Bathymetric contours: index; intermediate	
Stream, lake: perennial; intermittent	
Rapids, large and small; falls, large and small	
Area to be submerged: marsh, swamp	
Land subject to controlled inundation; woodland	
Scrub; mangrove	
Orchard; vineyard	