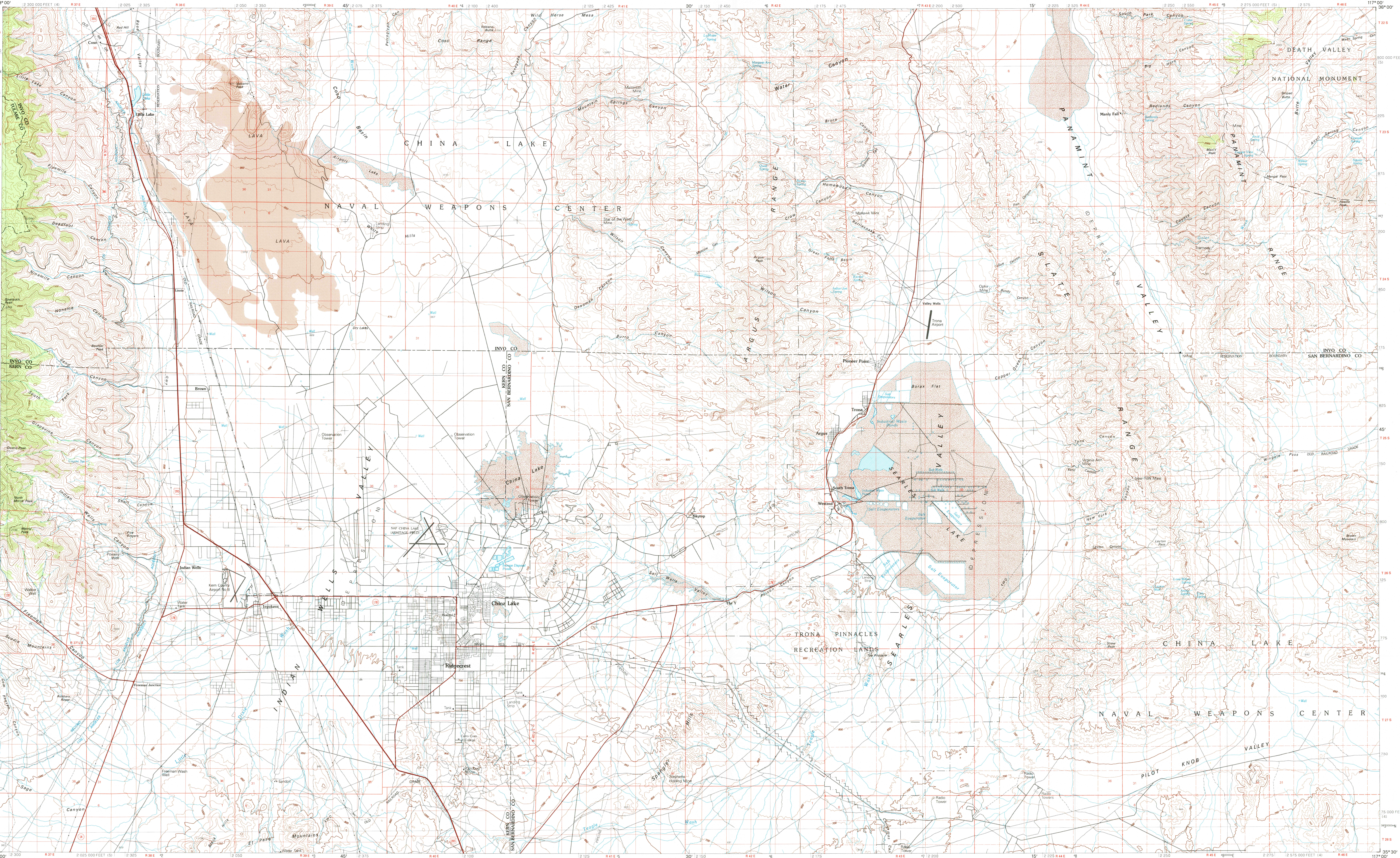


RIDGECREST, CALIFORNIA

30 X 60 MINUTE SERIES (TOPOGRAPHIC)



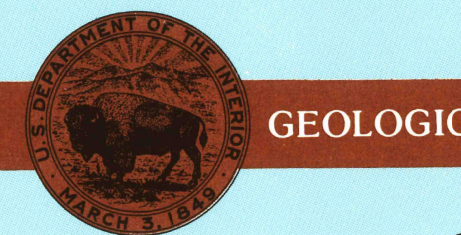
Ridgecrest CALIFORNIA

1:100 000-scale metric topographic map



30 X 60 MINUTE QUADRANGLE SHOWING

- Contours and elevations in meters
- Highways, roads and other manmade structures
- Water features
- Woodland areas
- Geographic names



1993

Produced by the United States Geological Survey
Compiled from USGS 1:24 000 and 1:62 500-scale topographic maps dated 1949-1973. Planimetry revised from aerial photographs taken 1973-1989 and other source data. Revised information not field checked. Map edited 1993.
1927 North American Datum (NAD 27). Projection and 10 000-meter grid. Universal Transverse Mercator, zone 11 25 000-foot ticks. California coordinate system, zones 5 and 4.
The difference between NAD 27 and North American Datum of 1983 (NAD 83) is too small to show at this scale. The values of the shift between the datums for 7.5-minute intersections are given in USGS Bulletin 1875.
There may be private inholdings within the boundaries of the National or State reservations shown on this map. Protracted land lines are dashed.
Where omitted, land lines have not been established or are not shown due to insufficient data.

CONTOUR INTERVAL 50 METERS
SUPPLEMENTARY CONTOUR INTERVAL 25 METERS
NATIONAL GEODETIC VERTICAL DATUM OF 1929
ELEVATIONS SHOWN TO THE NEAREST METER

THIS MAP COMPLIES WITH NATIONAL MAP ACCURACY STANDARDS

CONVERSION TABLE

Meters	Feet
1	3.2808
2	6.5617
3	9.8425
4	13.1234
5	16.4042
6	19.6850
7	22.9658
8	26.2467
9	29.5275
10	32.8084

To convert meters to feet multiply by 3.2808

To convert feet to meters multiply by 0.3048

DECLINATION DIAGRAM

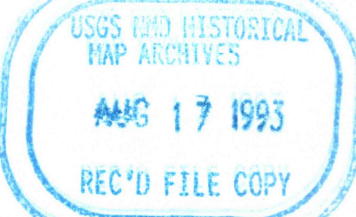
UTM grid convergence (GN) and 100 magnetic declination (M) at center of map. Diagram is approximate.

ADJOINING MAPS

1	2	3
4	5	6
7	8	

- 1 Three Rivers
- 2 Darwin Hills
- 3 Death Valley-Junc.
- 4 Isabella Lake
- 5 Overhead Mts.
- 6 Tehachas
- 7 Cuddeback Lake
- 8 Soda Mountains

FOR SALE BY U. S. GEOLOGICAL SURVEY, DENVER, COLORADO 8022 OR RESTON, VIRGINIA 22092



Topographic Map Symbols

Primary highway, hard surface	
Secondary highway, hard surface	
Light duty road, principal street, hard or improved surface	
Other road or street; track	
Road marker; intermediate; U. S. State	
Railroad; standard gage; narrow gage	
Bridge; overpass; underpass	
Tunnel; road; railroad	
Built up area; locality; elevation	
Airport; landing field; landing strip	
National boundary	
State boundary	
County boundary	
National or State reservation boundary	
Land grant boundary	
U. S. public-lands survey; range, township; section	
Range, township; section line; protected	
Power transmission line; pipeline	
Dam; dam with lock	
Cemetery; building	
Windmill; water well; spring	
Mine shaft; adit or cave mine; quarry; gravel pit	
Campground; picnic area; U. S. location monument	
Ruins; cliff dwelling	
Distorted surface; strip mine; lava; sand	
Contours; index; intermediate; supplementary	
Bathymetric contours; index; intermediate	
Stream, lake; perennial; intermittent	
Rapids, large and small; falls, large and small	
Area to be submerged; marsh, swamp	
Land subject to controlled inundation; woodland	
Scrub; mangrove	
Orchard; vineyard	

A pamphlet describing topographic maps is available on request

• INTERIOR—GEOLOGICAL SURVEY, RESTON, VIRGINIA—1993

SCALE 1:100 000
CONTOUR INTERVAL 50 METERS
SUPPLEMENTARY CONTOUR INTERVAL 25 METERS

RIDGECREST, CALIFORNIA
35117-E1-TM-100

1993