

Sheep Hole Mts.

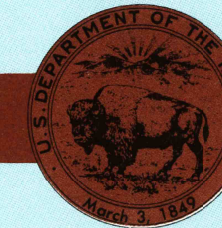
CALIFORNIA

**1:100 000-scale *metric*
topographic map**



30 X 60 MINUTE QUADRANGLE SHOWING

- Contours and elevations in meters
- Highways, roads and other manmade structures
- Water features
- Woodland areas
- Geographic names



GEOLOGICAL SURVEY

1985

Produced by the United States Geological Survey
Compiled from USGS 1:24 000 and 1:62 500-scale topographic maps
dated 1954-1956. Planimetry revised from aerial photographs
taken 1975 and other source data. Revised information not
field checked. Map edited 1985

Projection and 10 000-meter grid, zone 11,
Universal Transverse Mercator
25 000-foot grid ticks based on California coordinate system,
zones 5 and 6
1927 North American Datum
To place on the predicted North American Datum 1983
move the projection lines 76 meters east

There may be private inholdings within the boundaries of the National or State reservations shown on this map

CONTOUR INTERVAL 50 METERS
NATIONAL GEODETIC VERTICAL DATUM OF 1929

THIS MAP COMPLIES WITH NATIONAL MAP ACCURACY STANDARDS

CONVERSION TABLE		DECLINATION DIAGRAM		ADJOINING MAPS			
Meters	Feet			1	2	3	4
1	3.2808	<p>UTM grid convergence (GV) and magnetic declination (MV) at center of map Diagram is approximate</p>	<p>14° 07° 15'</p>				
2	6.5617						
3	9.8425						
4	13.1234						
5	16.4042						
6	19.6850						
7	22.9659						
8	26.2467						
9	29.5276						
10	32.8084						

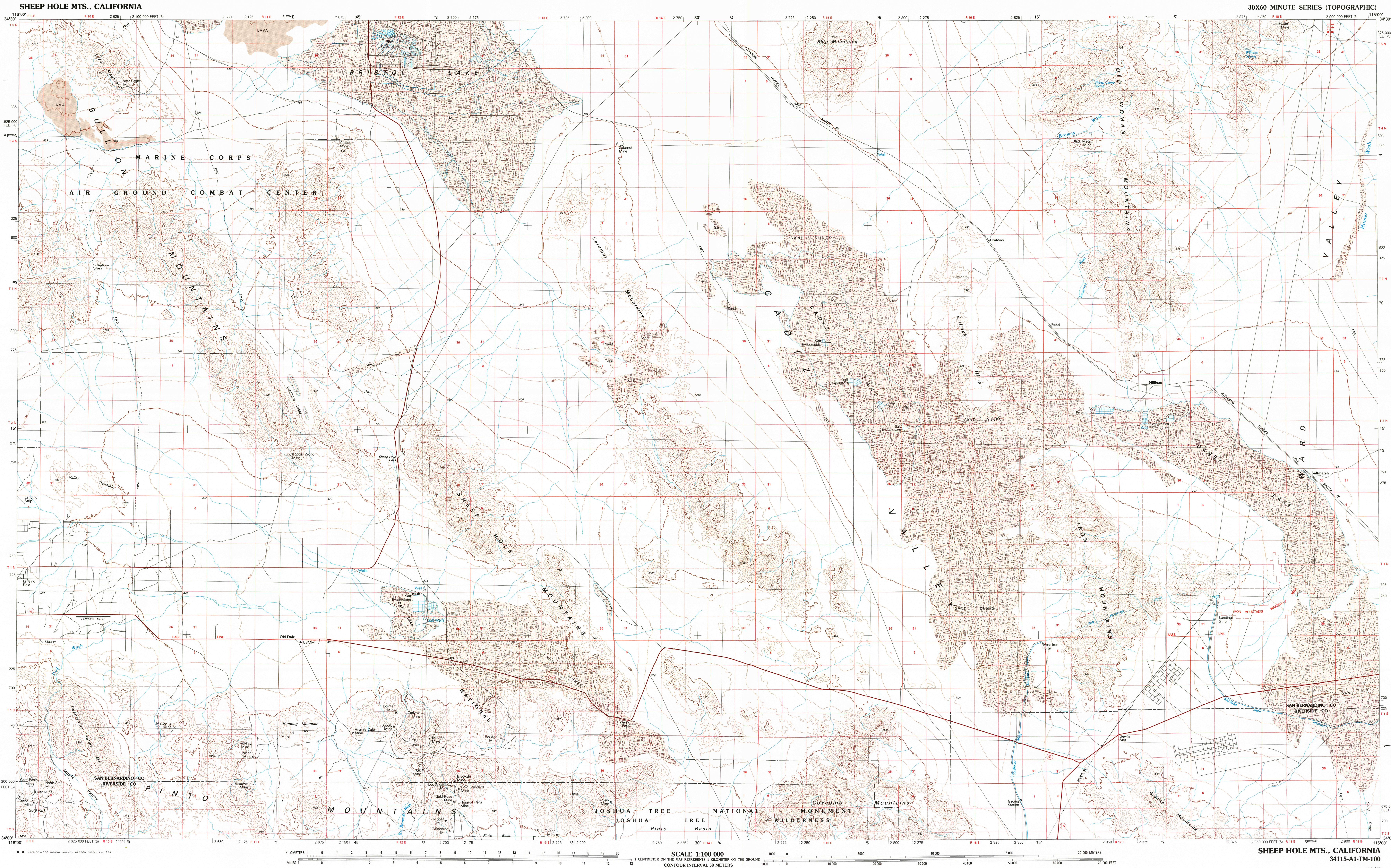
To convert meters to feet multiply by 3.2808	To convert feet to meters multiply by 0.3048	1	Newberry Springs
		2	Amboy
		3	Needles
		4	Big Bear Lake
		5	Parkers
		6	Palm Springs
		7	Eagle Mountain
		8	Blythe

FOR SALE BY U. S. GEOLOGICAL SURVEY, DENVER, COLORADO 8022
OR RESTON, VIRGINIA 22092

Topographic Map Symbols

Primary highway, hard surface	
Secondary highway, hard surface	
Light duty road, principal street, hard or improved surface	
Other road or street, trail	
Route marker: Interstate, U. S.; State	
Railroad: standard gauge; narrow gauge	
Bridge: overpass; underpass	
Tunnel: road; railroad	
Build-up area; locally: elevation	
Airport: landing field; landing strip	
National boundary	
State boundary	
County boundary	
National or State reservation boundary	
Land grant boundary	
U. S. public lands section: range, township; section	
Range, township; section line: protracted	
Range, township; section line: surveyed	
Range, township; section line: pipeline	
Dam; dam with lock	
Canal: building	
Windmill; water well; spring	
Mine shaft; adit or cave; mine, quarry; gravel pit	
Water reservoir; picnic area; U. S. location monument	
Disturbed dwelling	
Ruined structure: strip mine; lava; sand	
Contour: index; intermediate; supplementary	
Mathematic contours: index; intermediate	
Stream; lake; perennial; intermittent	
Rapids, large and small; falls, large and small	
Area to be submerged; marsh, swamp	
Land subject to controlled inundation; woodland	
Sand; sandstone	
Orchard; vineyard	

A pamphlet describing topographic maps is available on request



SHEEP HOLE MTS., CALIFORNIA
34115-A1-TM-100