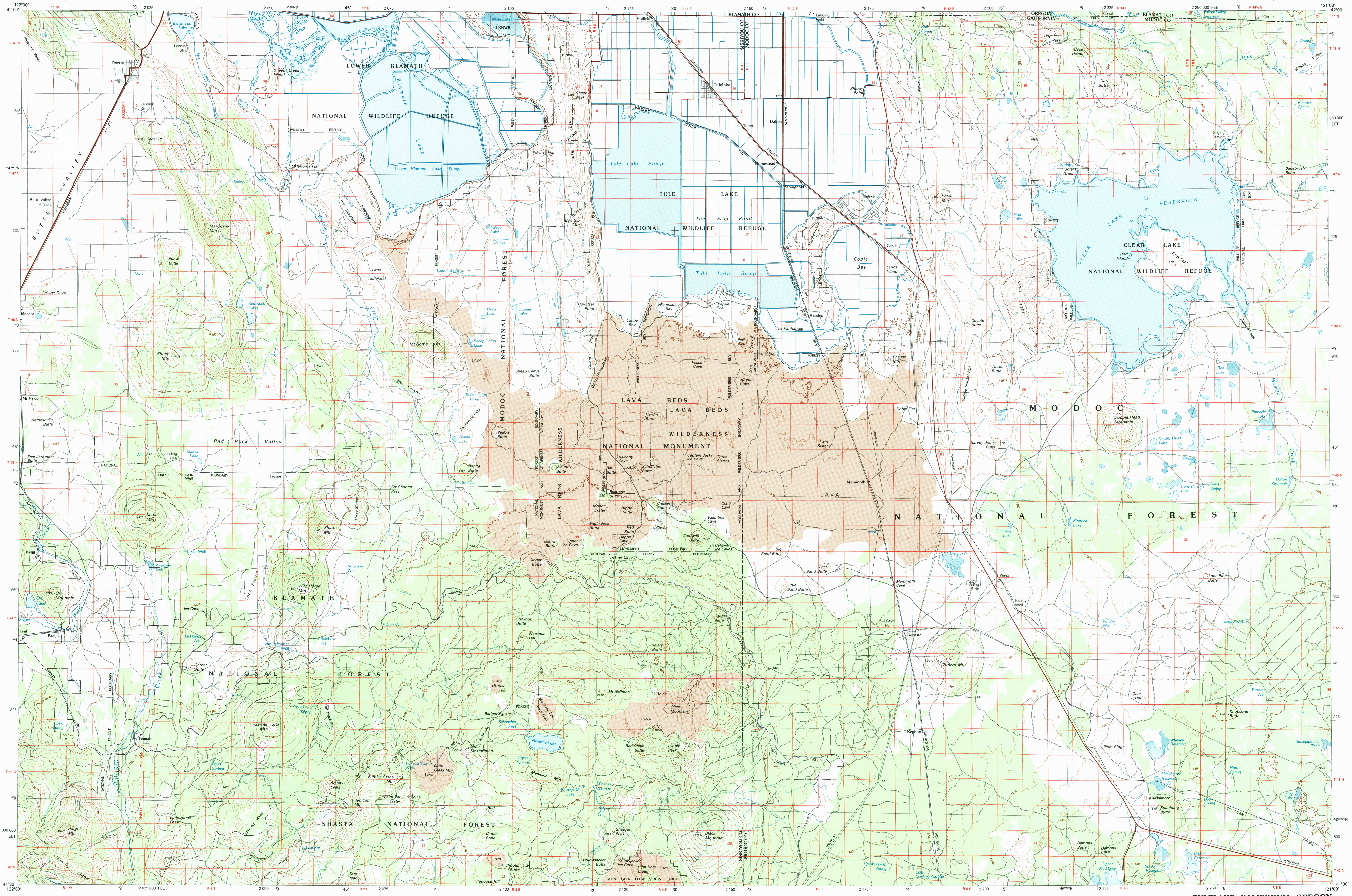


TULELAKE, CALIFORNIA-OREGON

30X60 MINUTE SERIES (TOPOGRAPHIC)



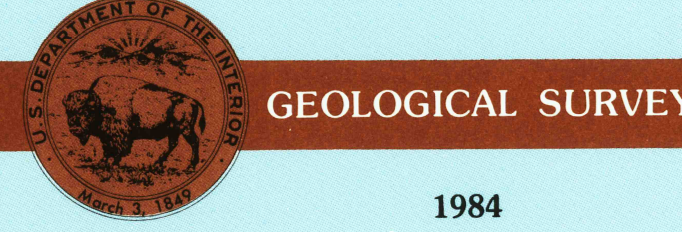
Tulelake CALIFORNIA-OREGON

1:100 000-scale metric topographic map



30 X 60 MINUTE QUADRANGLE SHOWING

- Contours and elevations in meters
- Highways, roads and other manmade structures
- Water features
- Woodland areas
- Geographic names



Produced by the United States Geological Survey
 Compiled from USGS 1:52 500-scale topographic maps dated 1950-1952. Planimetry revised from aerial photographs taken 1981 and other source data. Revised information not field checked. Map edited 1984.
 Projection and 10 000-meter grid, zone 10, Universal Transverse Mercator
 25 000-foot grid ticks based on California coordinate system, zone 1, 1927 North American Datum
 To place on the predicted North American Datum 1983 move the projection lines 18 meters north and 92 meters east
 There may be private inholdings within the boundaries of the National or State reservations shown on this map

CONTOUR INTERVAL 50 METERS
 SUPPLEMENTARY CONTOUR INTERVAL 25 METERS
 NATIONAL GEODETIC VERTICAL DATUM OF 1929

THIS MAP COMPLES WITH NATIONAL MAP ACCURACY STANDARDS

FOR SALE BY U.S. GEOLOGICAL SURVEY,
 P.O. BOX 25286, DENVER, COLORADO, 80225

Meters	Feet	DECLINATION DIAGRAM			ADJOINING TABLE		
1	3.2808				1	2	3
2	6.5617				4	5	
3	9.8425				6	7	
4	13.1234				8	9	
5	16.4042				10		
6	19.6850						
7	22.9659						
8	26.2467						
9	29.5275						
10	32.8084						

To convert meters to feet multiply by 3.2808
 To convert feet to meters multiply by 0.3048

UTM grid coverage 18N and 18M magnetic declination (MM) at center of map. Diagram is approximate.

1 Medford
 2 Klamath Falls
 3 Lakeview
 4 Yreka
 5 Coquille
 6 Mount Shasta
 7 McArthur
 8 Alturas



Topographic Map Symbols

- Primary highway, hard surface
- Secondary highway, hard surface
- Light duty road, principal street, hard or improved surface
- Other road or street; trail
- Route marker: Interstate, U. S., State
- Railroad: standard gage; narrow gage
- Bridge; overpass; underpass
- Tunnel; road; railway; elevation
- Built up area; locality; elevation
- Airport: landing field; landing strip
- National boundary
- County boundary
- National or State reservation boundary
- Land grant boundary
- U. S. public lands survey: range, township, section
- Range, township; section line; protracted
- Power transmission line; pipeline
- Dam; dam with lock
- Cemetery; building
- Well; water well; spring
- Mine shaft; adit or cave; mine; quarry; gravel pit
- Campground; picnic area; U. S. location monument
- Ruin; cliff dwelling
- Distorted surface: strip mine, levee, sand
- Contours: index; intermediate; supplementary
- Bathymetric contours: index; intermediate
- Stream, lake; perennial; intermittent
- Rapids, large and small; falls, large and small
- Area to be submerged; marsh, swamp
- Land subject to controlled inundation; woodland
- Soak; mangrove
- Drainage; viewpoint