

VICTORVILLE, CALIFORNIA

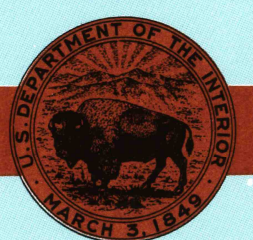
30X60 MINUTE SERIES (TOPOGRAPHIC)

1:100 000-scale metric
topographic map of
Victorville
CALIFORNIA



30 X 60 MINUTE QUADRANGLE
SHOWING

- Contours and elevations in meters
- Highways, roads and other manmade structures
- Water features
- Woodland areas
- Geographic names



GEOLOGICAL SURVEY

1982

Produced by the United States Geological Survey
in cooperation with the U.S. Forest Service
Compiled from USGS 1:24 000-scale topographic maps
dated 1968-1974. Planimetry revised from aerial photographs
taken 1977-79 and other source data. Revised information not
field checked. Map edited 1982
Projection and 10 000-meter grid, zone 11,
Universal Transverse Mercator
25 000-foot grid ticks based on California coordinate system,
zones 5 and 7, 1957 North American Datum
To place on the predicted North American Datum 1983
move the projection lines 4 meters north and 83 meters east
There may be private inholdings within the boundaries of
the National or State reservations shown on this map

CONTOUR INTERVAL 50 METERS
NATIONAL GEODETIC VERTICAL DATUM OF 1929

THIS MAP COMPLIES WITH NATIONAL MAP ACCURACY STANDARDS

FOR SALE BY U.S. GEOLOGICAL SURVEY,
P.O. BOX 25596, DENVER, COLORADO, 80225

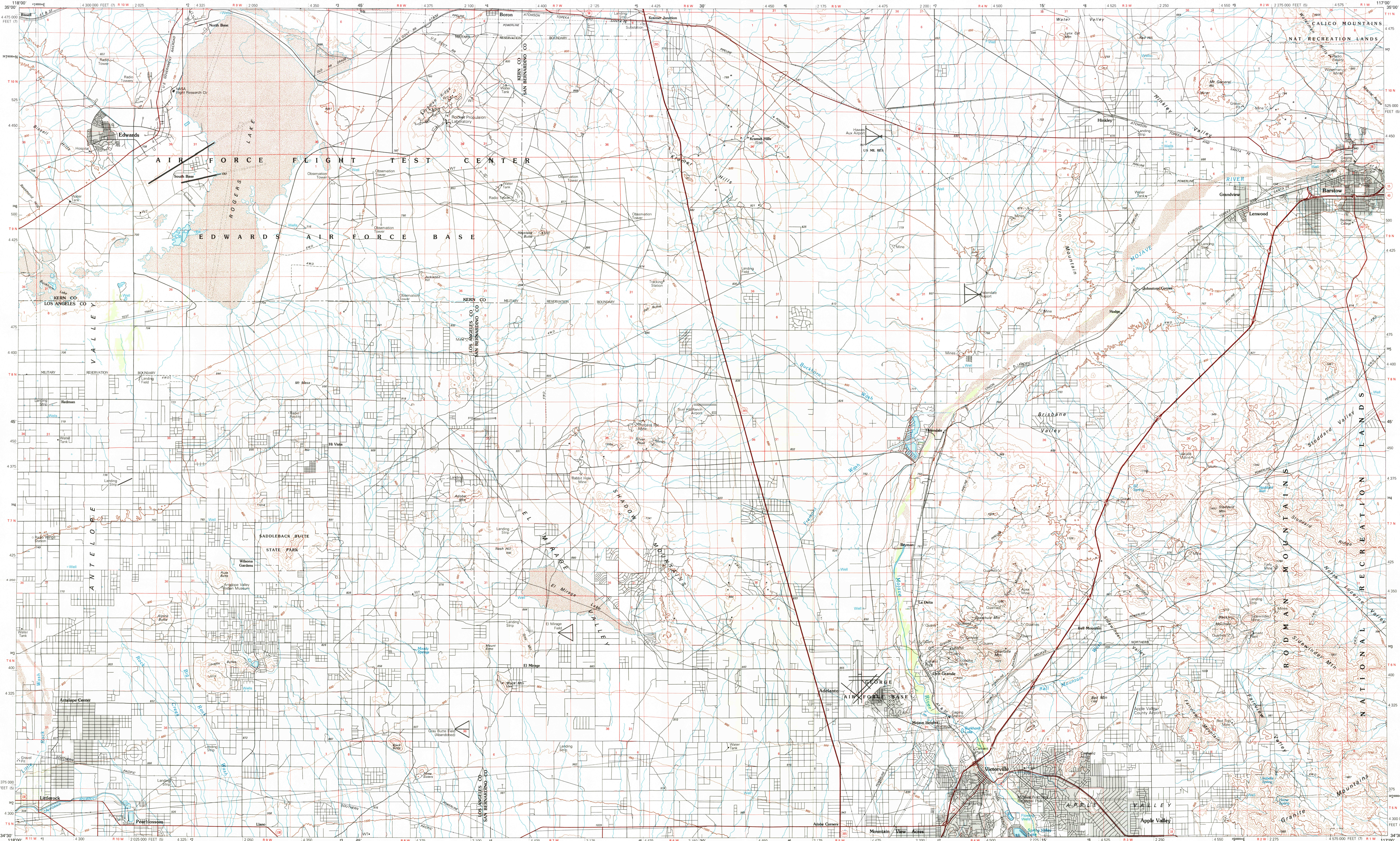
CONVERSION TABLE		DECLINATION DIAGRAM		ADJOINING MAPS		
Meters	Feet			1	2	3
1	3.2808	<p>UTM grid convergence (6M and 180 magnetic declination (MM) at center of map Diagram is approximate</p>	<p>14°17' 5 MILS</p>	4	5	6
2	6.5617			7	8	7
3	9.8425					
4	13.1234					
5	16.4042					
6	19.6850					
7	22.9659					
8	26.2467					
9	29.5275					
10	32.8084					
To convert meters to feet multiply by 3.2808				1 Tehachapi		
To convert feet to meters multiply by 0.3048				2 Caddishead Lake		
				3 Soda Mountains		
				4 Lancaster		
				5 Newberry Springs		
				6 Los Angeles		
				7 San Bernardino		
				8 Big Bear Lake		



Topographic Map Symbols

Primary highway, hard surface	
Secondary highway, hard surface	
Light duty road, principal street, hard or improved surface	
Other road or street, trail	
Route marker: interstate, U. S.; State	
Railroad: standard gauge, narrow gauge	
Bridge: overpass; underpass	
Tunnel: road; railroad	
Built up area, locality, elevation	
Airport: landing field; landing strip	
National boundary	
State boundary	
National or State reservation boundary	
County boundary	
Land grant boundary	
U. S. public lands survey: range, township, section	
Pump, township, section line: protracted	
Power transmission line; pipeline	
Dam; dam with lock	
Cemetery; building	
Windmill; water well; spring	
Mine shaft; adit or cave; mine, quarry; gravel pit	
Compass; picnic area; U. S. location monument	
Ruin; cliff dwelling	
Distorted surface: strip mine, lava; sand	
Contours: index; intermediate; supplementary	
Bathymetric contours: index; intermediate	
Stream, lake, perennial; intermittent	
Rapids, large and small; falls, large and small	
Area to be submerged; marsh, swamp	
Land subject to controlled inundation; woodland	
Scrub; mangrove	
Orchard; vineyard	

A pamphlet describing topographic maps is available on request



INTERIOR-GEOLOGICAL SURVEY, RESTON, VIRGINIA-1982

KILOMETERS 1 0 1 2 3 4 5 6 7 8 9 10 11 12 13 14 15 16 17 18 19 20

SCALE 1:100 000

1 CENTIMETER ON THE MAP REPRESENTS 1 KILOMETER ON THE GROUND
CONTOUR INTERVAL 50 METERS

0 5000 10000 15000 20000 25000 30000 35000 40000 45000 50000 55000 60000 65000 70000 FEET

VICTORVILLE, CALIFORNIA

N3430-W11700/30X60

1982