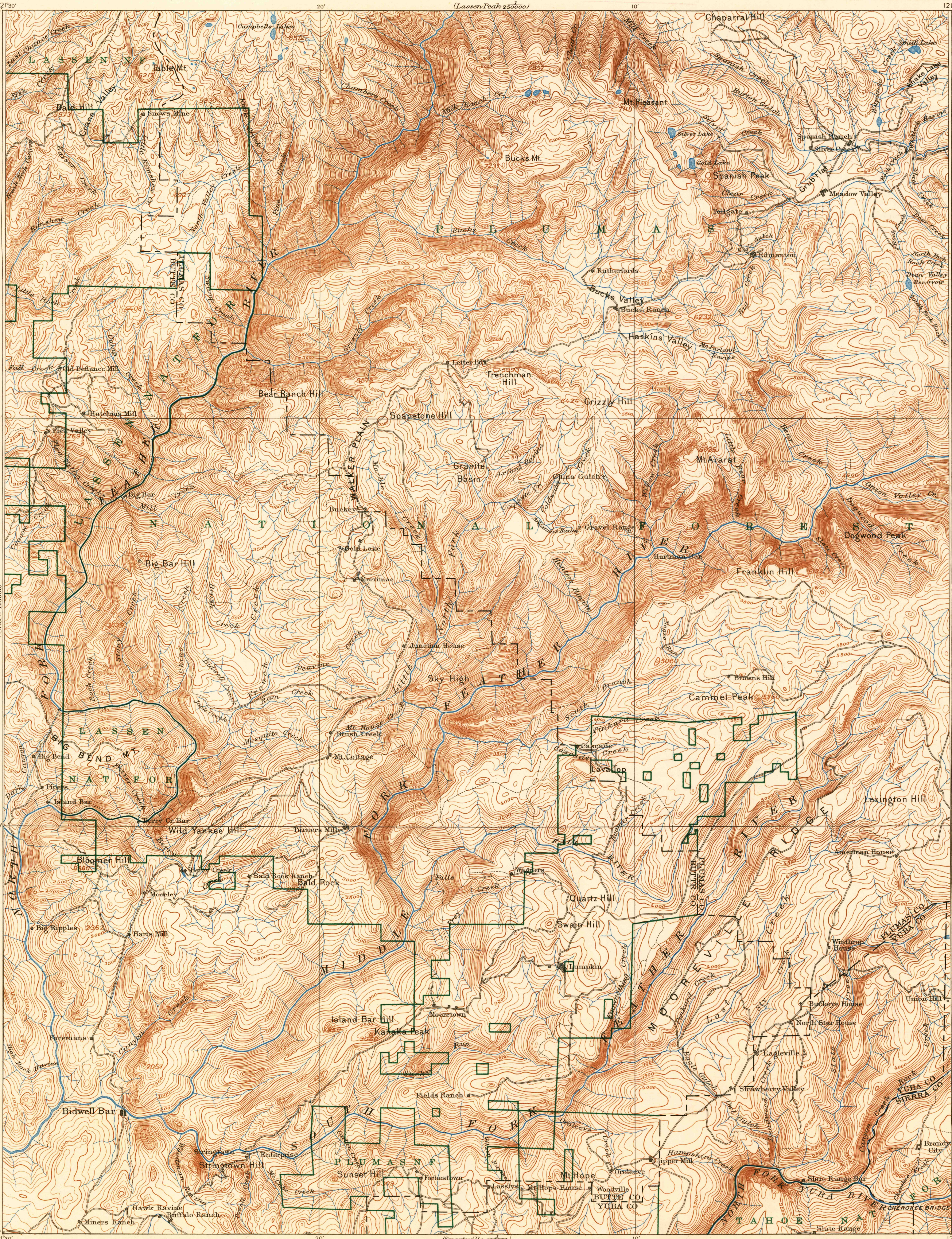


U.S. G.S.
FILE COPY
Washington and Eugene

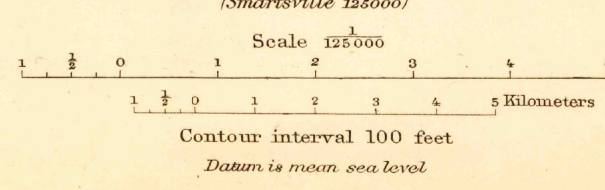
(Honey Lake)
(25000)



(Lassen Peak)
(25000)

(Marysville)
(25000)

Henry Gannett, Chief Geographer.
A.H. Thompson, Geographer in charge.
Triangulation by H.M. Wilson.
Topography by R.H. Mc. Kee.
Surveyed in 1885-6-8.



National Forest Boundary

USGS
Historical File
Topographic Division

Edition of April 1897, reprinted 1938

BIDWELL BAR, CALIF.

U.S. G.S.
FILE COPY
Washington and Eugene

(Colfax)
(25000)

MAR 14 1938