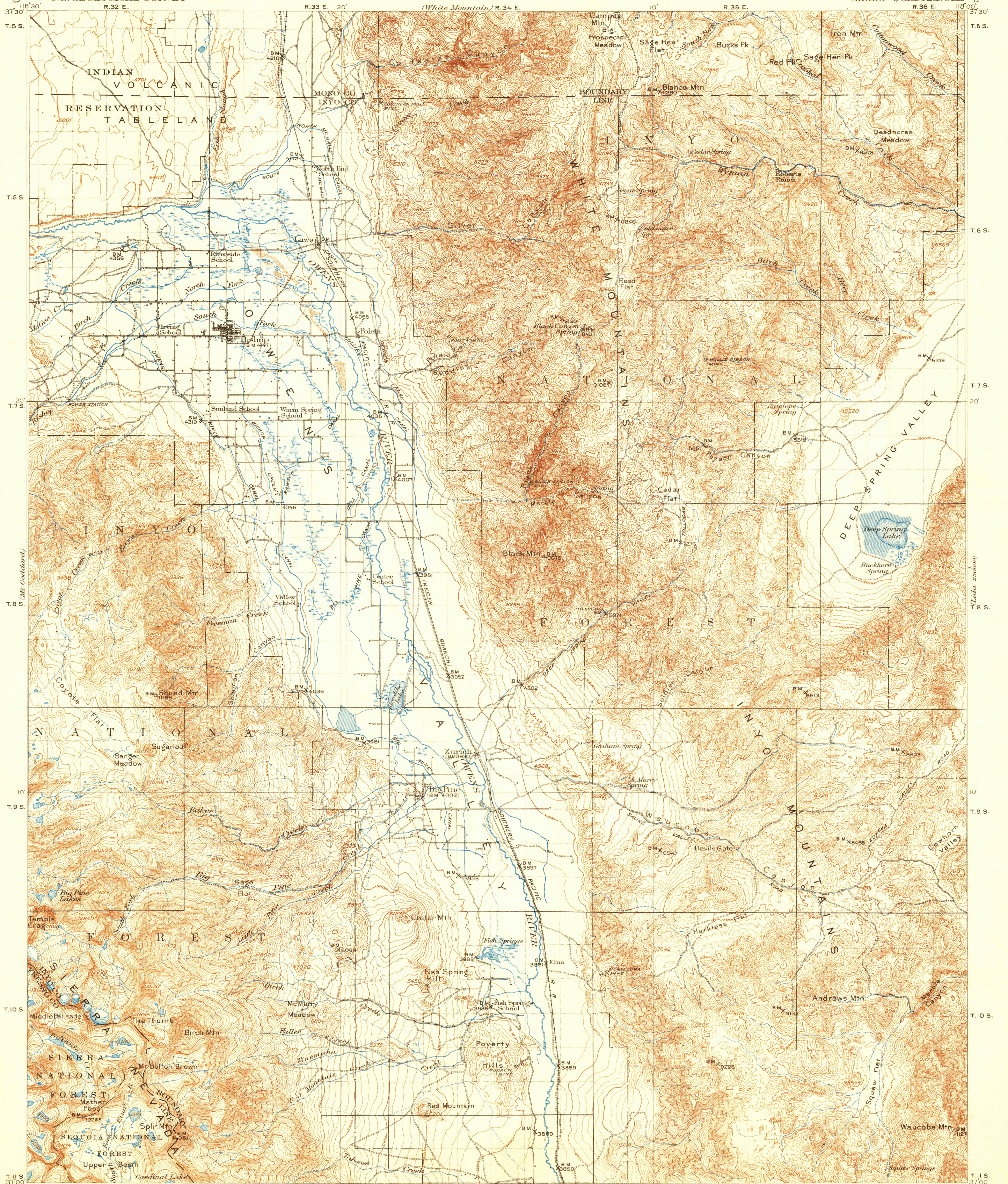


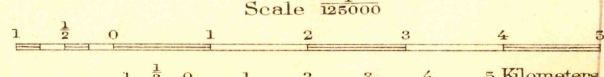
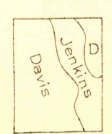
U.S.G.S. FILE COPY

DEPARTMENT OF THE INTERIOR  
U.S. GEOLOGICAL SURVEY

CALIFORNIA  
BISHOP QUADRANGLE



R.B. Marshall, Chief Geographer.  
T.C. Gardine, Geographer in charge.  
Topography by Geo. R. Davis and B.A. Jenkins.  
Control by C.F. Urquhart, L.F. Biggs, and R.A. Farmer.  
Surveyed in 1910 and 1911.



Scale 1:50,000  
Contour interval 100 feet.  
Datum is mean sea level.



USGS  
Historical File  
Topographic Division

Edition of May 1913, reprinted 1930  
Polyconic projection, North American datum

DEC 30 1930 (3045)

BISHOP, CALIF.