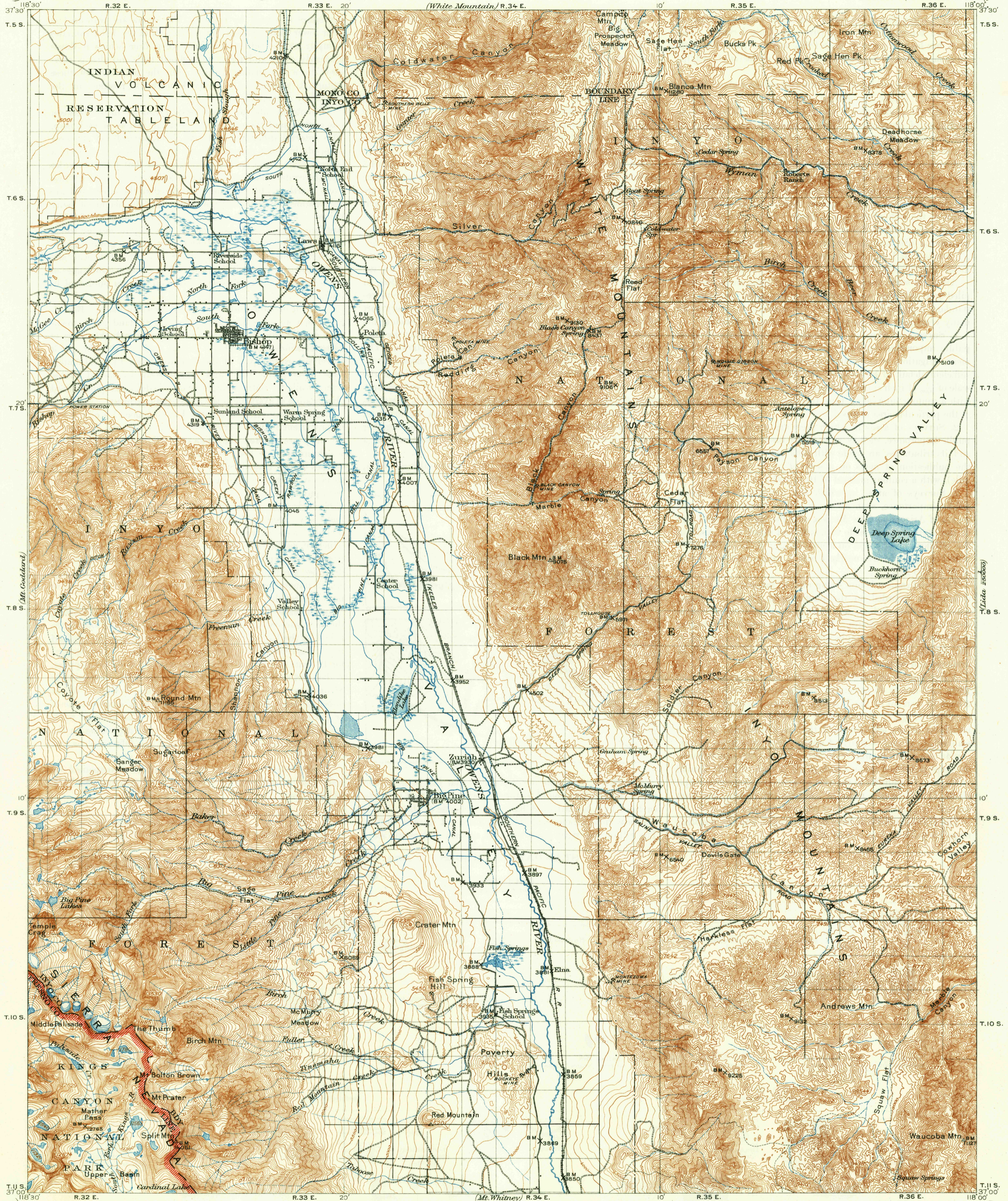
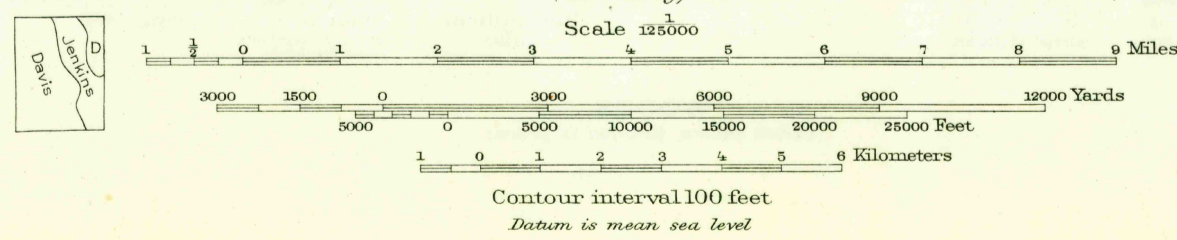


U. S. G. S.
FILE COPY



R.B. Marshall, Chief Geographer.
T.G. Gardine, Geographer in charge.
Topography by Geo. R. Davis and B.A. Jenkins.
Control by C.F. Unquhart, L.F. Biggs, and R.A. Farmer.
Surveyed in 1910 and 1911.



Edition of May 1913, reprinted 1947
Polyconic projection North American datum

USGS
Historical File
Topographic Division
Tussock and Gilling.

BISHOP, CALIF.
N 3700-W 11800/30

JUN 26 1947

2745