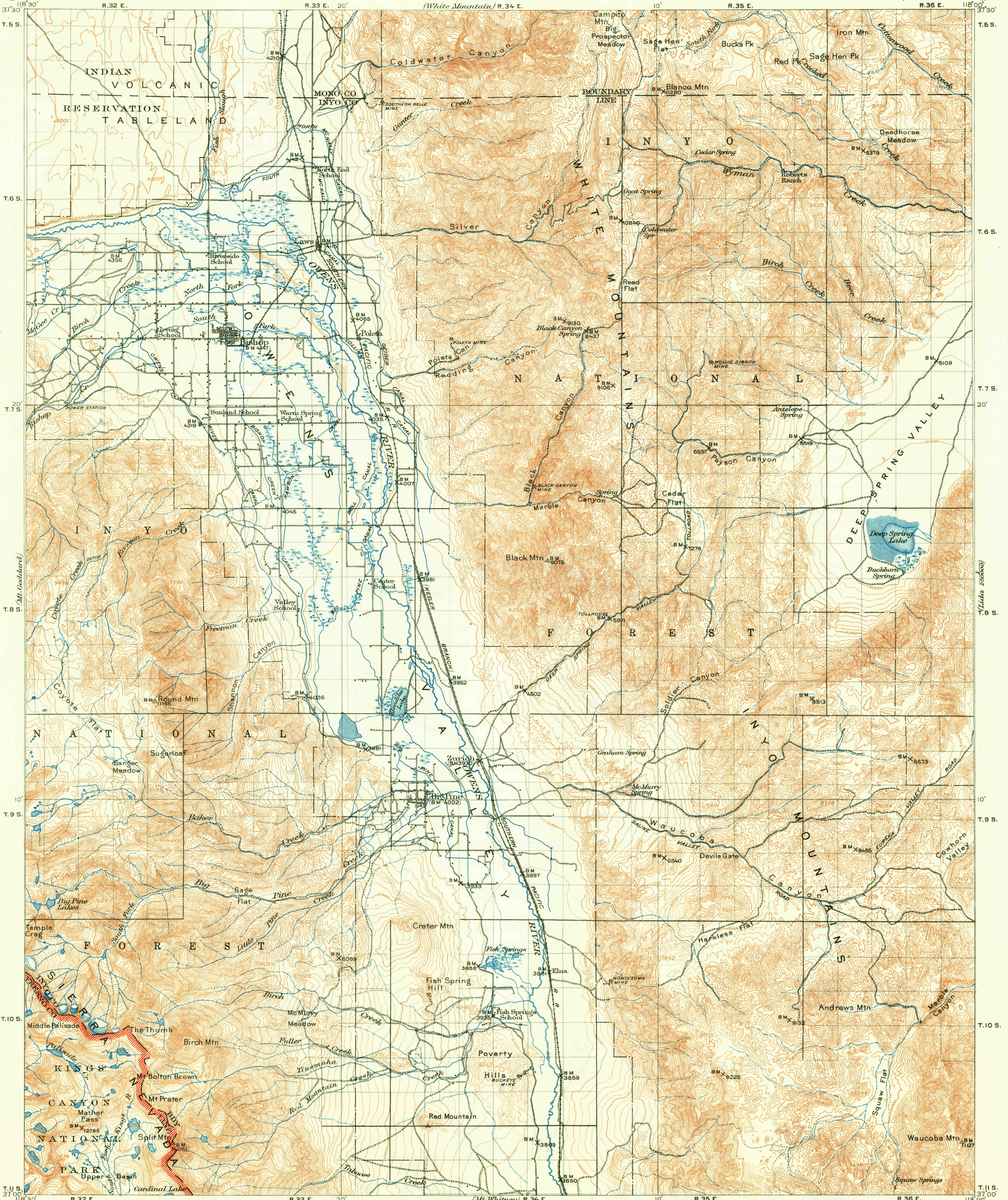


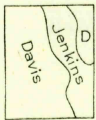
U.S.G.S
FILE COPY
Inspection and Editing.

UNITED STATES
DEPARTMENT OF THE INTERIOR
GEOLOGICAL SURVEY

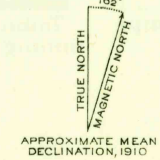
CALIFORNIA
BISHOP QUADRANGLE



R.B. Marshall, Chief Geographer.
T.G. Gardine, Geographer in charge.
Topography by Geo. R. Davis and B.A. Jenkins.
Control by C.F. Urquhart, L.F. Biggs, and R.A. Farmer.
Surveyed in 1910 and 1911.



Scale 1:25,000
0 1 2 3 4 5 6 7 8 9 Miles
0 3000 6000 9000 12000 15000 18000 21000 24000 27000 30000 Feet
0 1 2 3 4 5 6 Kilometers
Contour interval 100 feet
Datum is mean sea level



Edition of May 1913, reprinted 1950
Polyconic projection, North American datum

USGS
Historical File
FILE COPY
Inspection and Editing.

BISHOP, CALIF.
N 3700-W 11800/30

FOR SALE BY U.S. GEOLOGICAL SURVEY, FEDERAL CENTER, DENVER, COLORADO OR WASHINGTON 25, D.C.