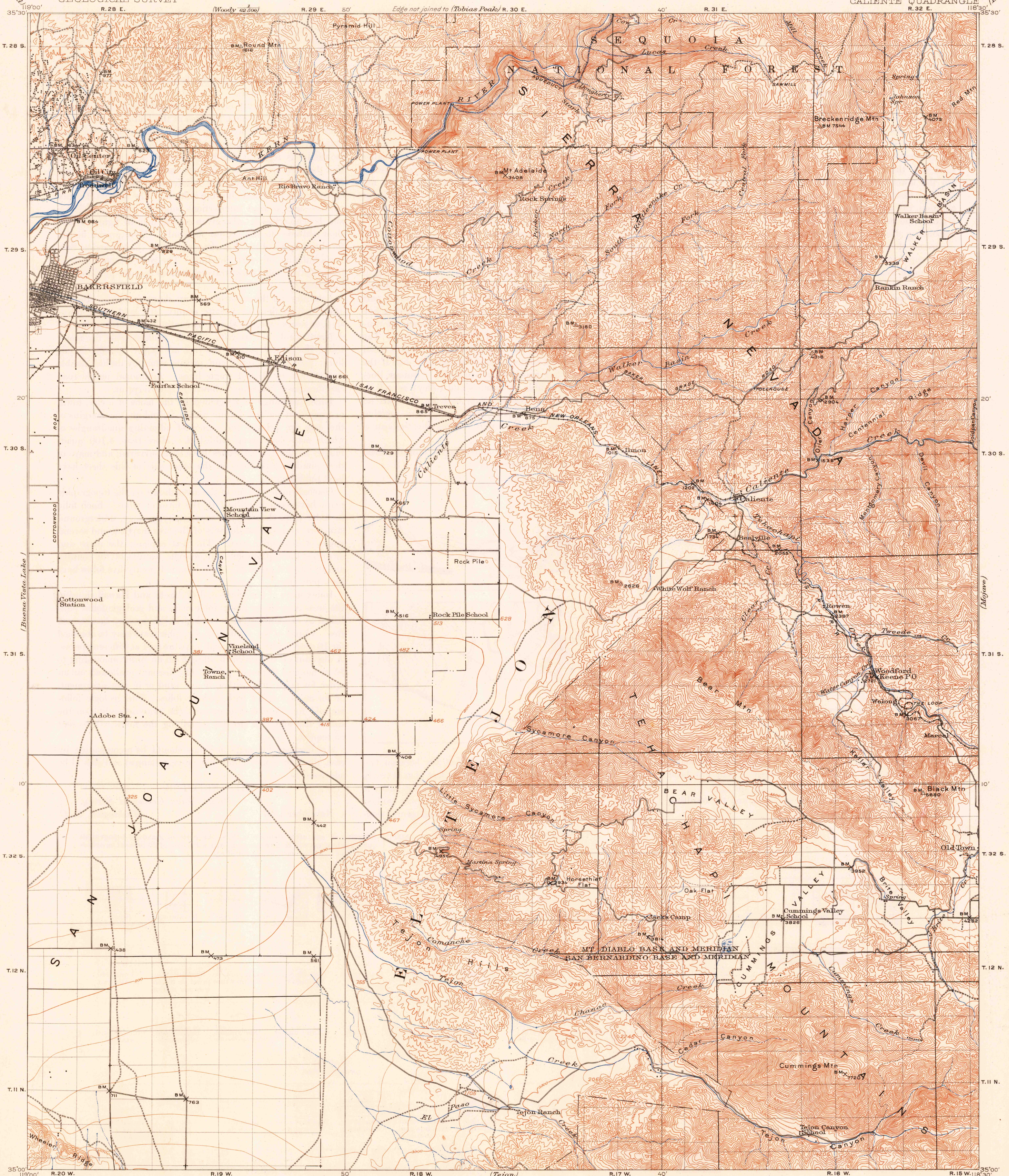


U. S. G. S.
FILE COPY
Inspection and Editing.

UNITED STATES
DEPARTMENT OF THE INTERIOR
GEOLOGICAL SURVEY

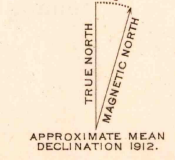
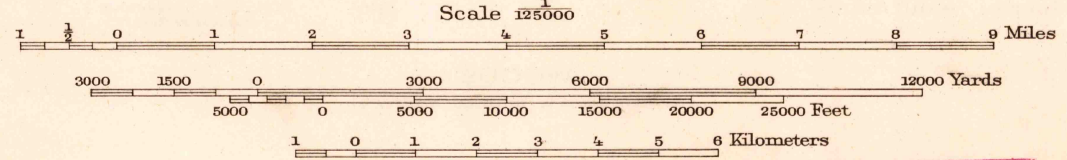
CALIFORNIA
(KERN COUNTY)
CALIENTE QUADRANGLE
R. 32 E.



R.B. Marshall, Chief Geographer.
T.G. Gerdine, Geographer in charge.
Topography by R.M. La Follette, Bayard Knock,
J.W. Miller and K.W. Trimble.
Control by C.F. Urquhart, C.H. Semper, and
G.L. Hagman.
Surveyed in 1910-1912.

DIAGRAM OF TOWNSHIP

6	5	4	3	2	1
7	8	9	10	11	12
13	14	15	16	17	18
19	20	21	22	23	24
25	26	27	28	29	30
31	32	33	34	35	36



Edition of May 1914, reprinted 1948
Polyconic projection North American datum

U. S. G. S.
FILE COPY
Topographic Division

Maps of the Bakersfield quadrangle, scale 1:62,500, contour interval 20 feet, Kern River Oil Field, scale 1:12,000, contour interval 20 feet, and the Oil Center, Fairfax School, Edison, Bana, Weed Patch, Arvin, Bear Min., West of Tejon Hills, and Tejon Hills quadrangles, from more detailed surveys covering the area adjacent to Oil Center and the San Joaquin Valley part of this quadrangle, are available.

CALIF.
CALIENTE

N 3500-W 11830/30

MAY 26 1948

321