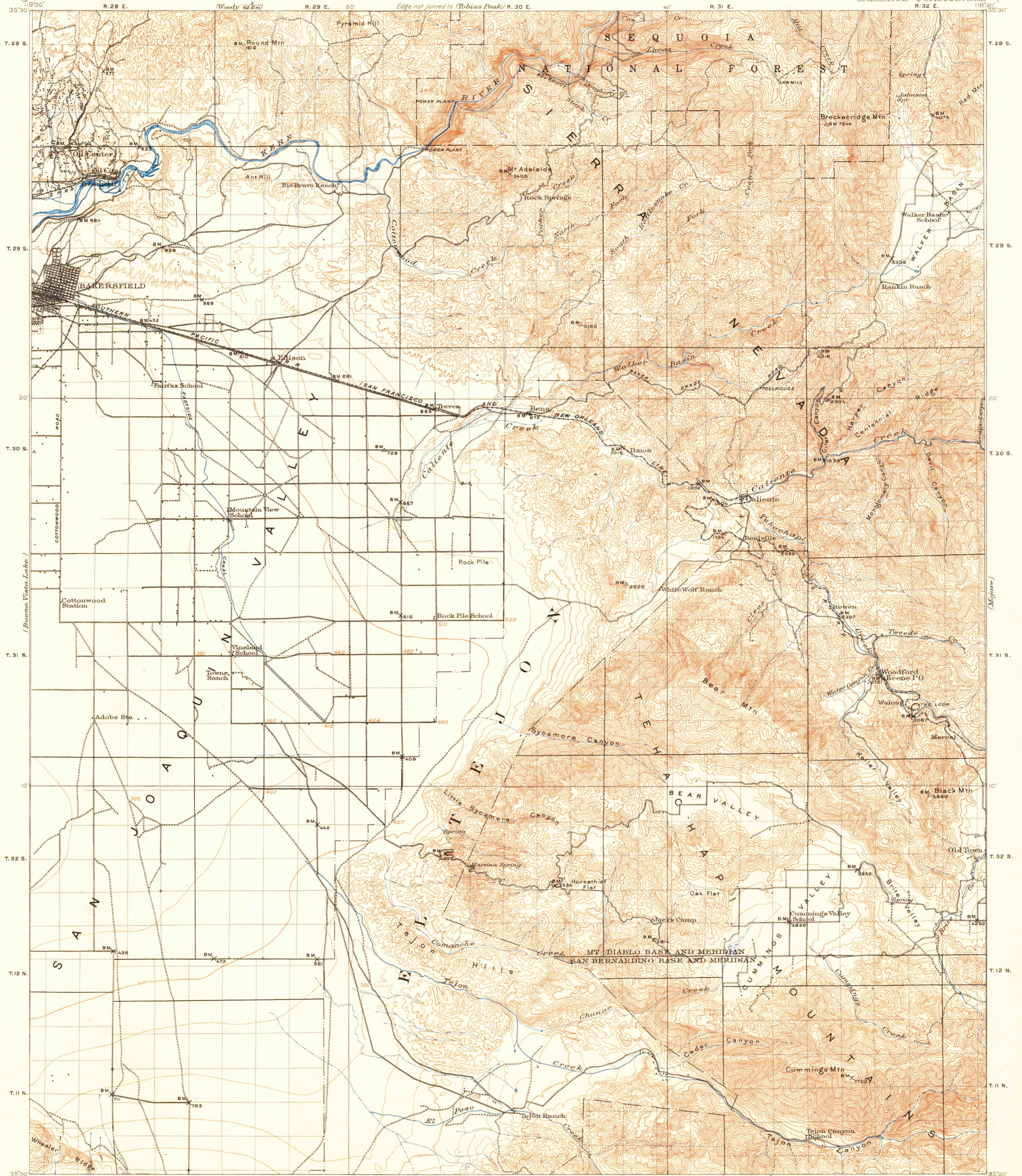


U. S. G. S.
FILE COPY
Inspection and Printing

UNITED STATES
DEPARTMENT OF THE INTERIOR
GEOLOGICAL SURVEY

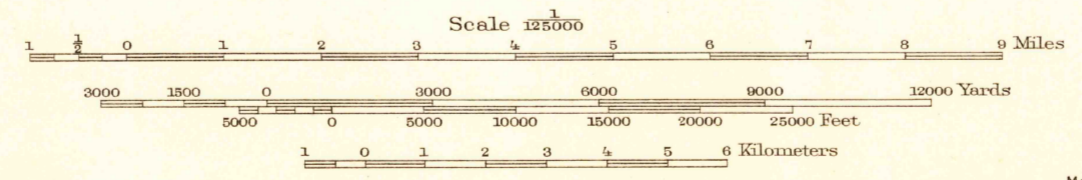
CALIFORNIA
(KERN COUNTY)
CALIENTE QUADRANGLE



R.B. Marshall, Chief Geographer.
T.G. Gardine, Geographer in charge.
Topography by R.M. La Follette, Bayard Knock,
J.W. Muller, and K.W. Trimble.
Control by C.F. Urquhart, C.H. Semper, and
G.L. Hagman.
Surveyed in 1910-1912.

DIAGRAM OF TOWNSHIP

6	5	4	3	2	1
7	8	9	10	11	12
13	14	15	16	17	18
19	20	21	22	23	24
25	26	27	28	29	30
31	32	33	34	35	36



Contour interval 100 feet
Datum is mean sea level

FOR SALE BY U.S. GEOLOGICAL SURVEY, FEDERAL CENTER, DENVER, COLORADO OR WASHINGTON 25, D.C.
A FOLDER DESCRIBING TOPOGRAPHIC MAPS AND SYMBOLS IS AVAILABLE ON REQUEST

Edition of May 1914, reprinted 1951
Polyconic projection; North American datum

TRUE NORTH
MAGNETIC NORTH

APPROXIMATE MEAN
DECLINATION 1912:

Maps of the Bakersfield quadrangle, scale 1:62,500, contour interval 20 feet, Kern River
Oil Field, scale 1:12,000, contour interval 20 feet, and the Oil Center, Fairfax School,
Edison, Bena, Weed Patch, Arvin, Bear Mtn., West of Tejon Hills, and Tejon Hills
quadrangles, from more detailed 50,000 scale maps covering the area adjacent to Oil Center and the
San Joaquin Valley part of this quadrangle, are available

U.S.G.S.
Historical File
Topographic Division
Inspection and Printing

CALIF
CALIENTE

N3500-W11830/30

MAR 9 1951 4345