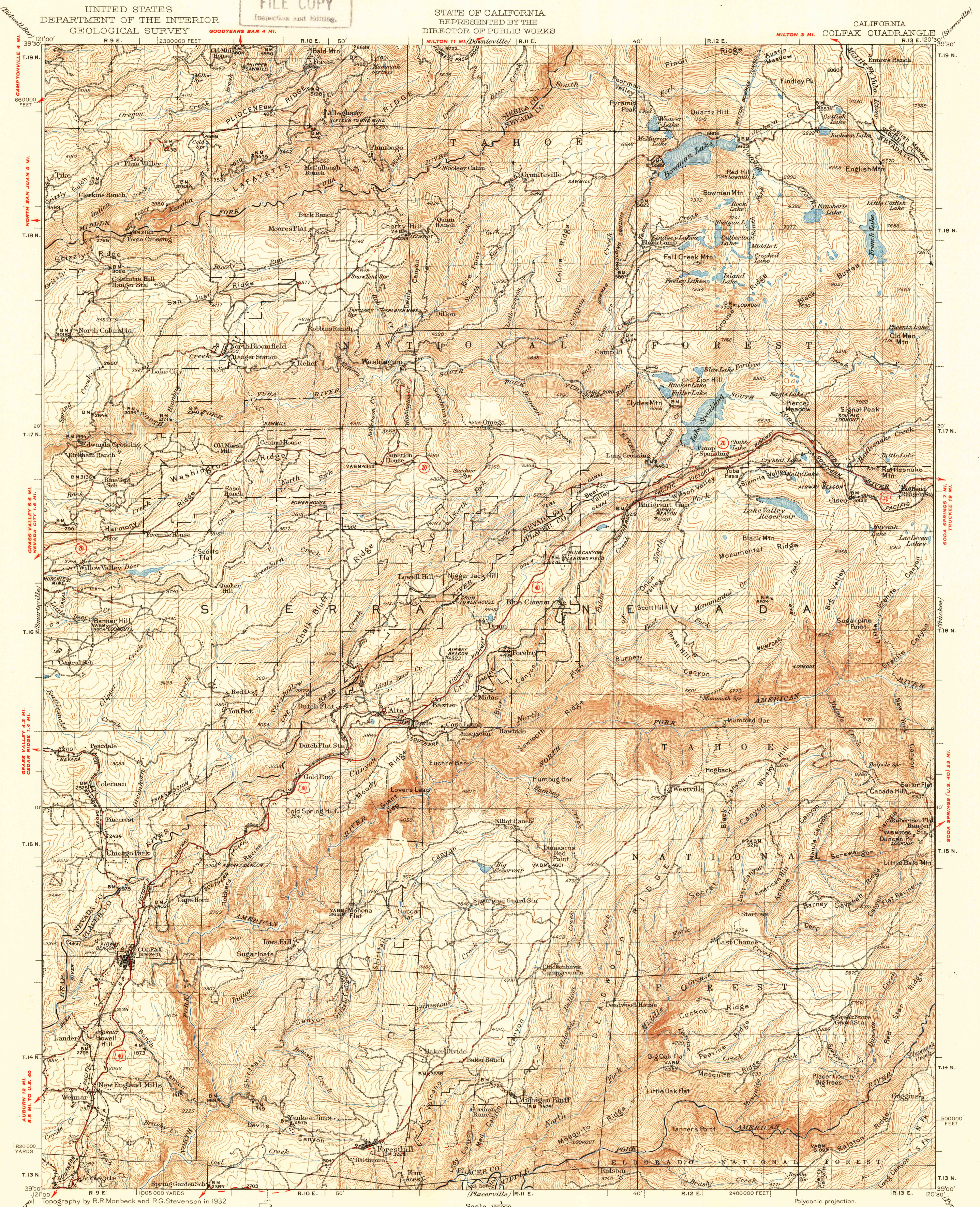


U.S.G.S.  
FILE COPY  
Inspection and Editing.

UNITED STATES  
DEPARTMENT OF THE INTERIOR  
GEOLOGICAL SURVEY

STATE OF CALIFORNIA  
REPRESENTED BY THE  
DIRECTOR OF PUBLIC WORKS

CALIFORNIA  
COLFAX QUADRANGLE



Topography by R.R. Monbeck and R.G. Stevenson in 1932

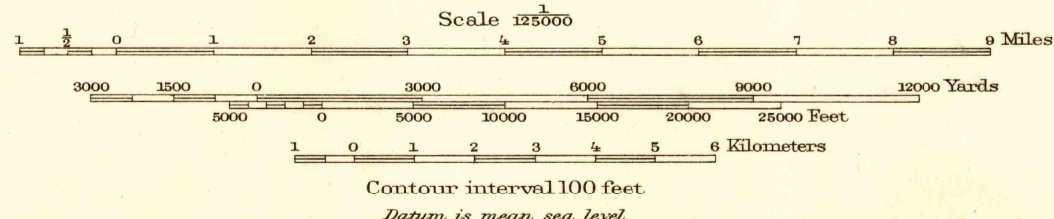


DIAGRAM OF TOWNSHIP

6	5	4	3	2	1
7	8	9	10	11	12
13	14	15	16	17	18
19	20	21	22	23	24
25	26	27	28	29	30
31	32	33	34	35	36

Polyconic projection.  
5000 yard grid based on U.S. zone system, G  
20000 foot grid based on California (2)  
rectangular coordinate system  
Map of the Banner Hill quadrangle, scale 1:14,400,  
contour interval 20 feet, from a more detailed survey  
of the mining area adjacent to Banner Hill, is available  
COLFAX, CALIF.  
Edition of 1936  
reprinted 1950  
N3900-W12030/30

FOR SALE BY U.S. GEOLOGICAL SURVEY, FEDERAL CENTER, DENVER, COLORADO OR WASHINGTON 25, D.C.  
A FOLDER DESCRIBING TOPOGRAPHIC MAPS AND SYMBOLS IS AVAILABLE ON REQUEST

USGS  
Historical  
Topographic  
Division  
Inspection and Editing.