

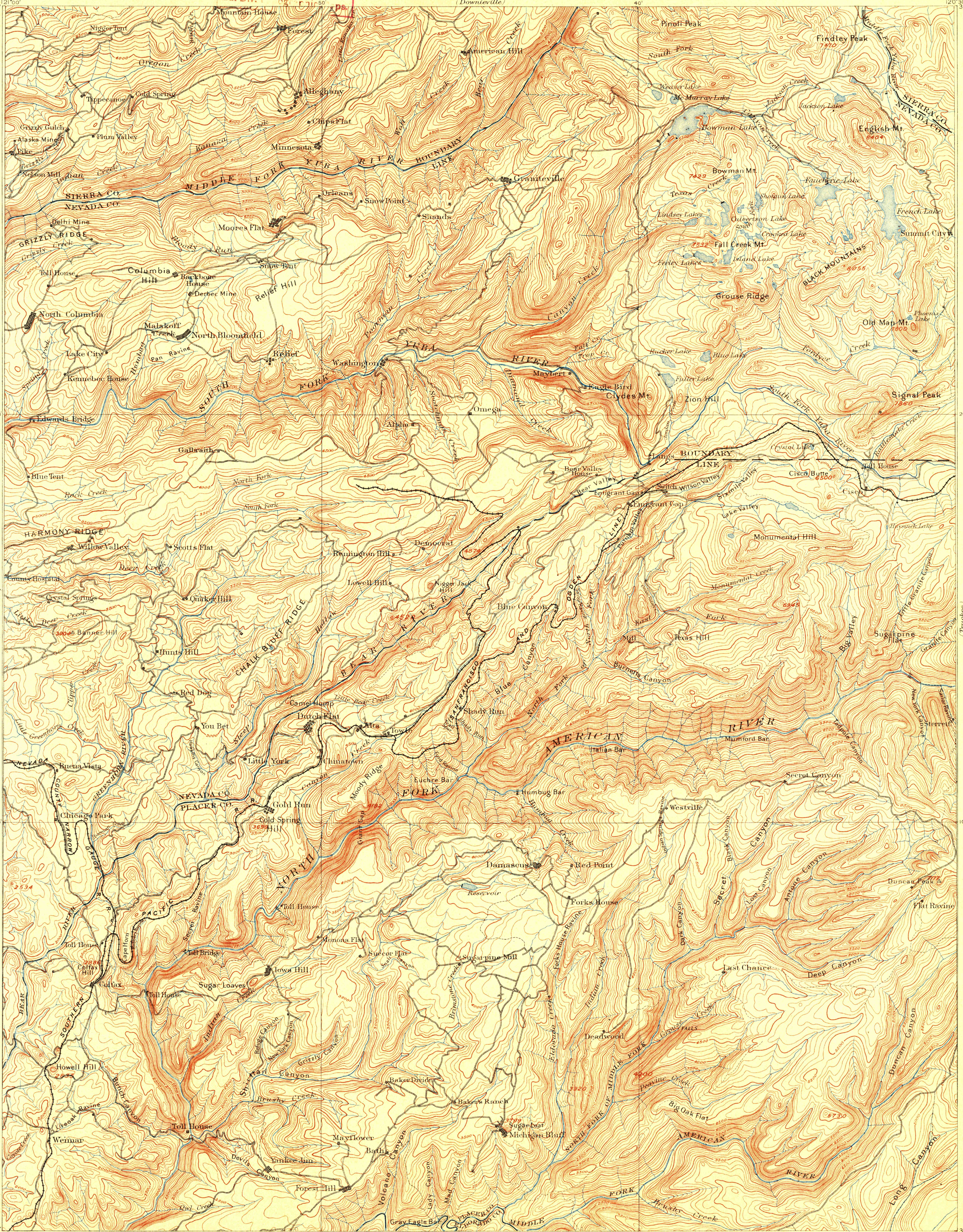
U. S. G. S.
FILE COPY
Ed. Div. 1

TOPOGRAPHIC SHEET

CALIFORNIA
COLFAX QUADRANGLE

(Stearnsville)

U.S. GEOLOGICAL SURVEY
CHARLES D. WALCOTT, DIRECTOR



Henry Gannett, Chief Topographer.
A. H. Thompson, Geographer in charge.
Triangulation by H. M. Wilson.
Topography by H. M. Wilson and A. F. Dunnington.
Surveyed in 1885-87.

Scale 1:25,000
1 2 3 4 5 Miles
1 2 3 4 5 Kilometers
Contour interval 100 feet.
Datum is mean sea level.

USGS
Historical File
U. S. Topographic Division
FILE COPY
Ed. Div. 1
Topographic Maps.

U.S. Geological Survey,
JUL 15 1902 2589
Ed. Div. Topographic Maps.
Colfax.

Edition of July 1902.