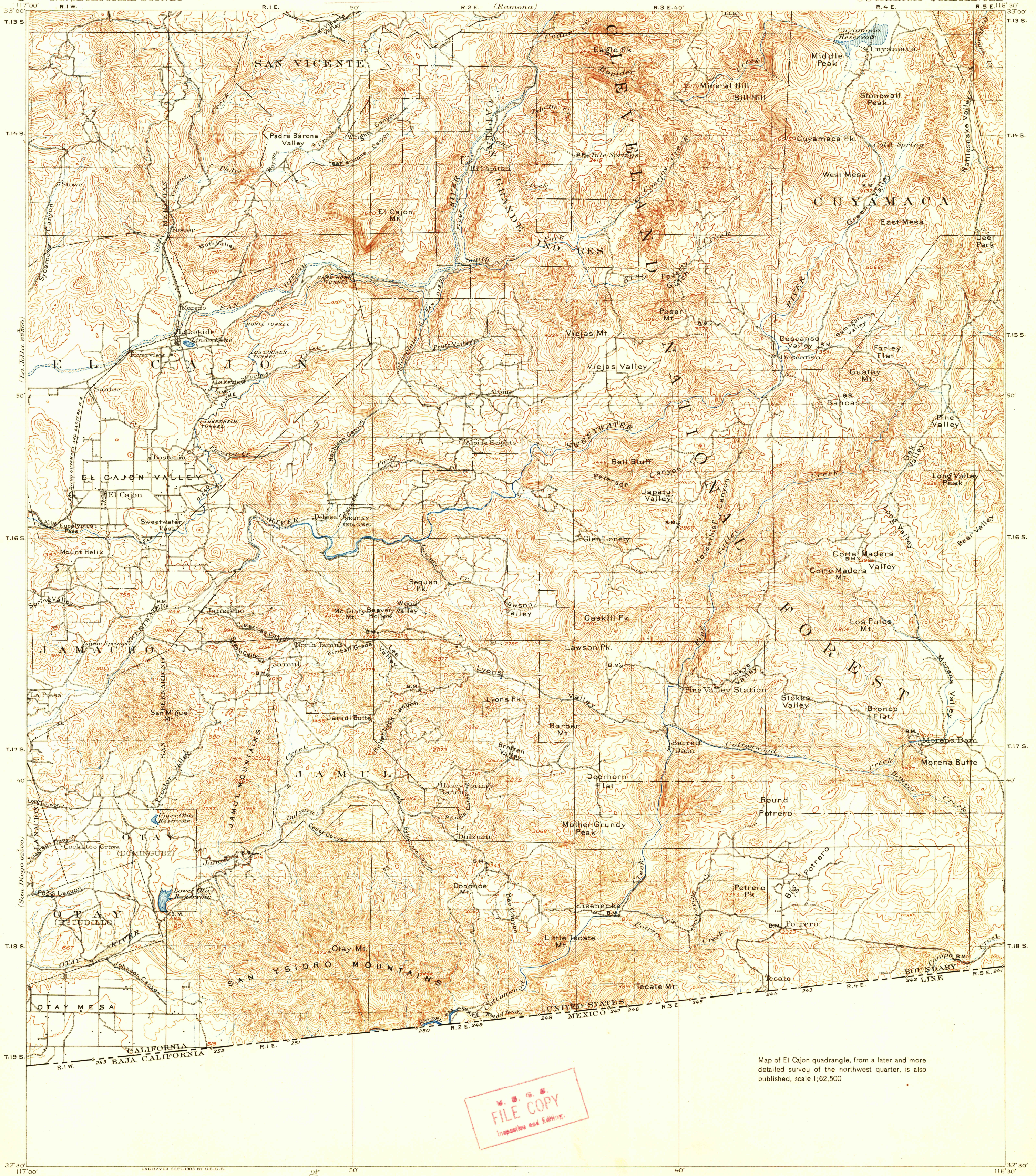


U.S.G.S. FILE COPY

DEPARTMENT OF THE INTERIOR
U.S. GEOLOGICAL SURVEY

CALIFORNIA
(SAN DIEGO COUNTY)
CUYAMACA QUADRANGLE

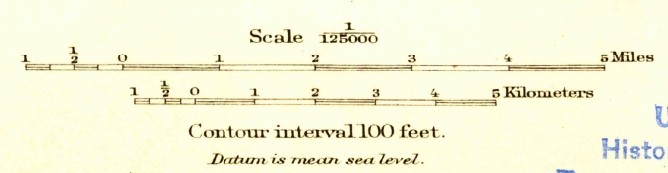


Map of El Cajon quadrangle, from a later and more detailed survey of the northwest quarter, is also published, scale 1:62,500

U.S.G.S. FILE COPY
Inoperative and Expired

ENGRAVED SEPT. 1903 BY U.S.G.S.
R.U. Goode, Geographer in charge.
Triangulation by U.S. Coast and Geodetic Survey.
Topography by E. T. Perkins, Jeremiah Ahern and A. I. Oliver.
Surveyed in 1891 and 1901-1902.

APPROXIMATE MEAN DECLINATION 1902.



Ahern
Oliver
Perkins

USGS
Historical File
Topographic Division

Edition of Dec. 1903, reprinted 1927
Polyconic projection. To place on North American datum move projection lines 630 feet south and 360 feet west

CUYAMACA, CALIF

MAY 10 1927 (3065) 3065