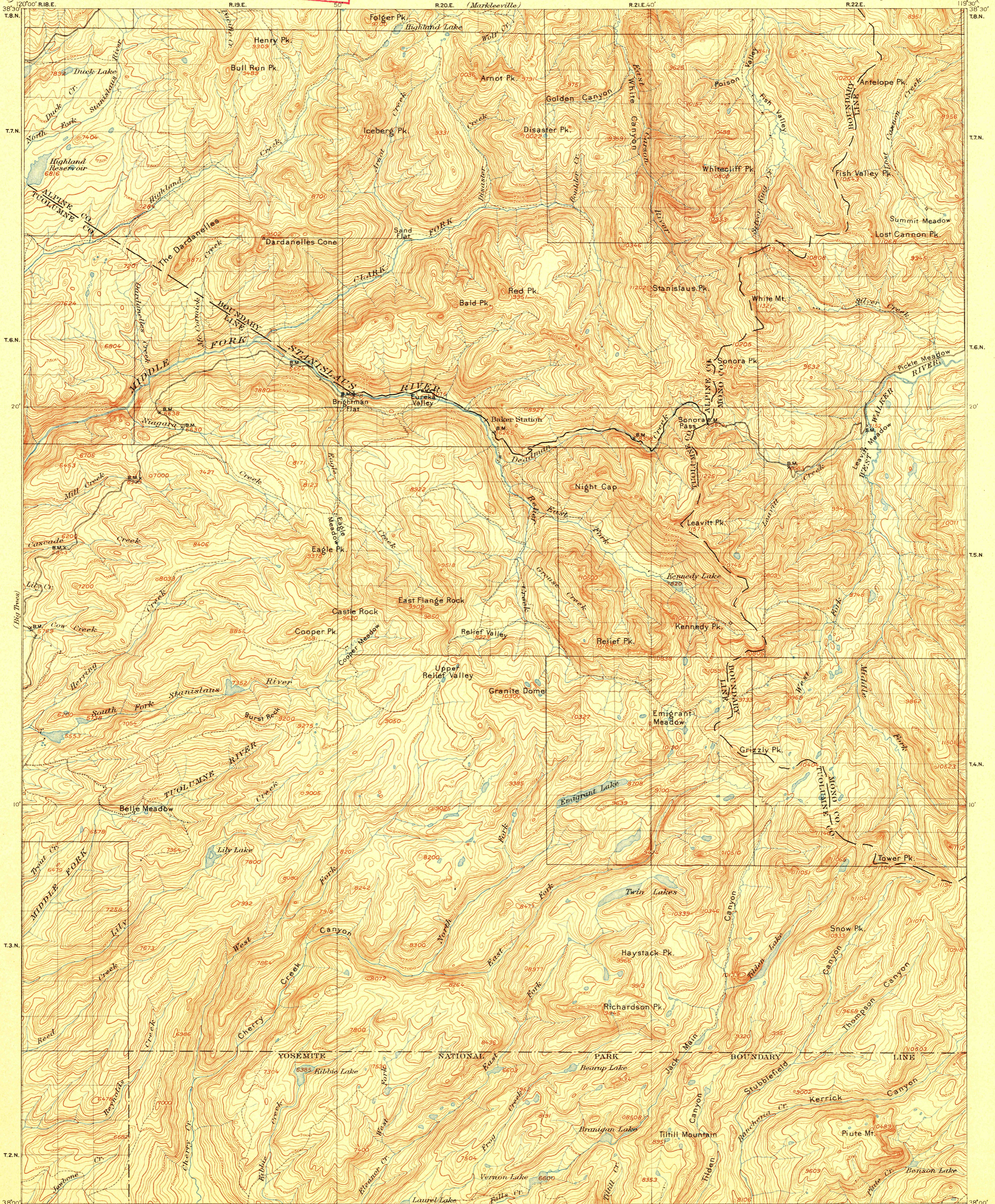


FILE COPY
Ed. Div. Topographic Maps.

U.S. GEOLOGICAL SURVEY
CHARLES D. WALCOTT, DIRECTOR

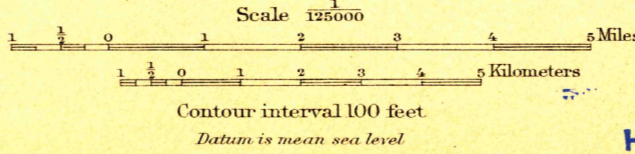
TOPOGRAPHIC SHEET

CALIFORNIA
DARDANELLES QUADRANGLE



1200' R.I.B.E.
R.U. Goode, Geographer in charge.
Triangulation by H.C. Feuser.
Topography by R.H. Mc Kee and R.B. Marshall.
Surveyed in 1891-96.

M. K.
91
Marshall
96



U. S. G. S.
FILE COPY
USGS
Historical File
Topographic Division

U.S. Geological Survey,
MAR 15 1902
Ed. Div. Topographic Maps.

Dardanelles

Edition of May 1898 reprinted Feb. 1902.

119°30'

(Sonoma)

119°30'