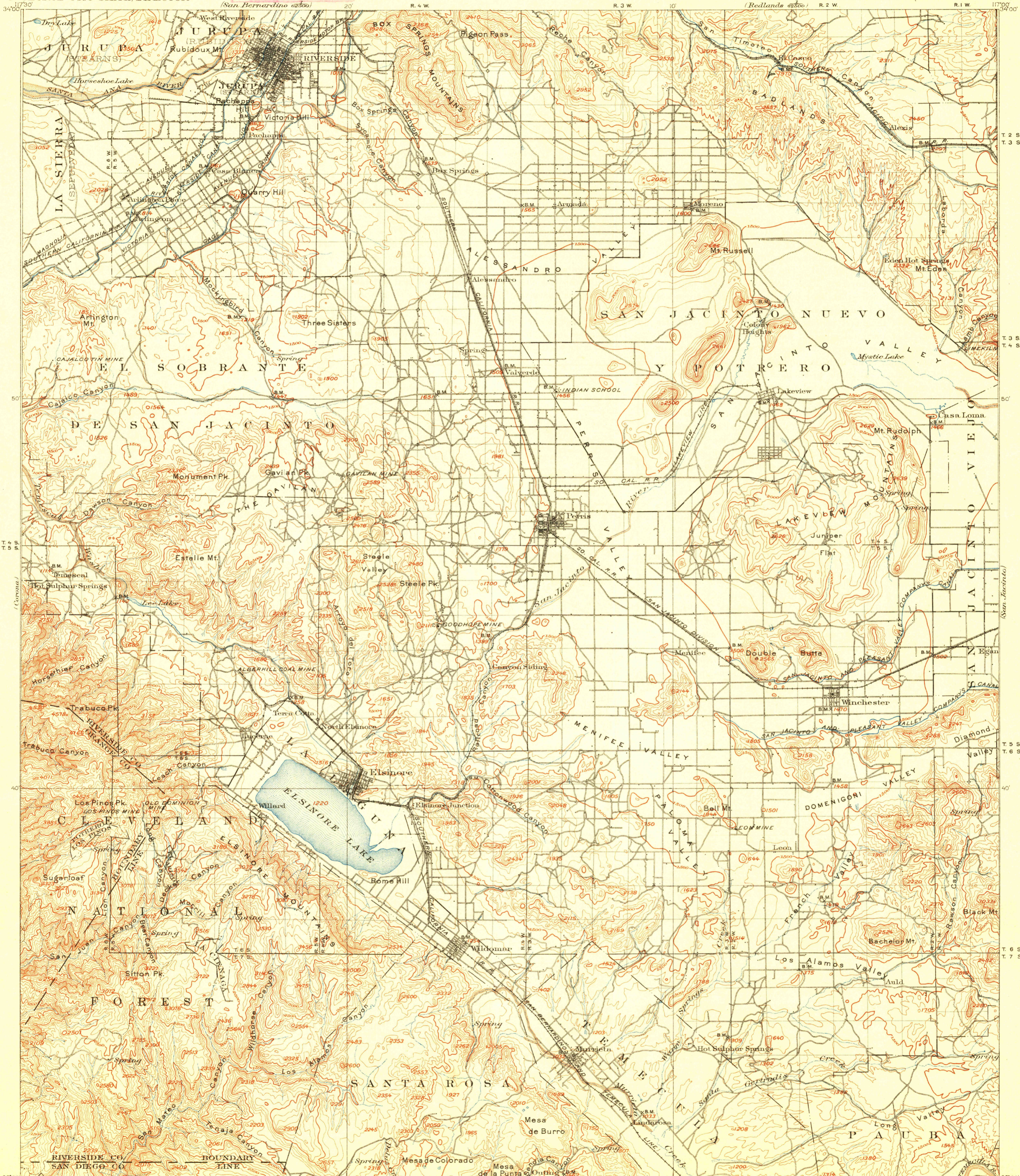


U.S.G.S.
FILE COPY
Ed. Div. Topographic Maps.

TOPOGRAPHY

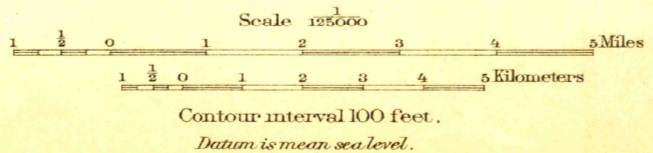
CALIFORNIA
ELSINORE QUADRANGLE

U.S. GEOLOGICAL SURVEY
GEORGE OTIS SMITH, DIRECTOR



R. U. Goode, Geographer in charge.
Triangulation by A. P. Davis.
Topography by R. B. Marshall.
Surveyed in 1897-98.

ENGRAVED MAY 1890 BY U.S.G.S.



U.S.G.S.
USGS
Historical File
Topographic Division

HISTORICAL

Edition of Feb. 1901, reprinted April 1913.

MAY 31 1913 5149

ELSINORE, CALIF.

(Removed)