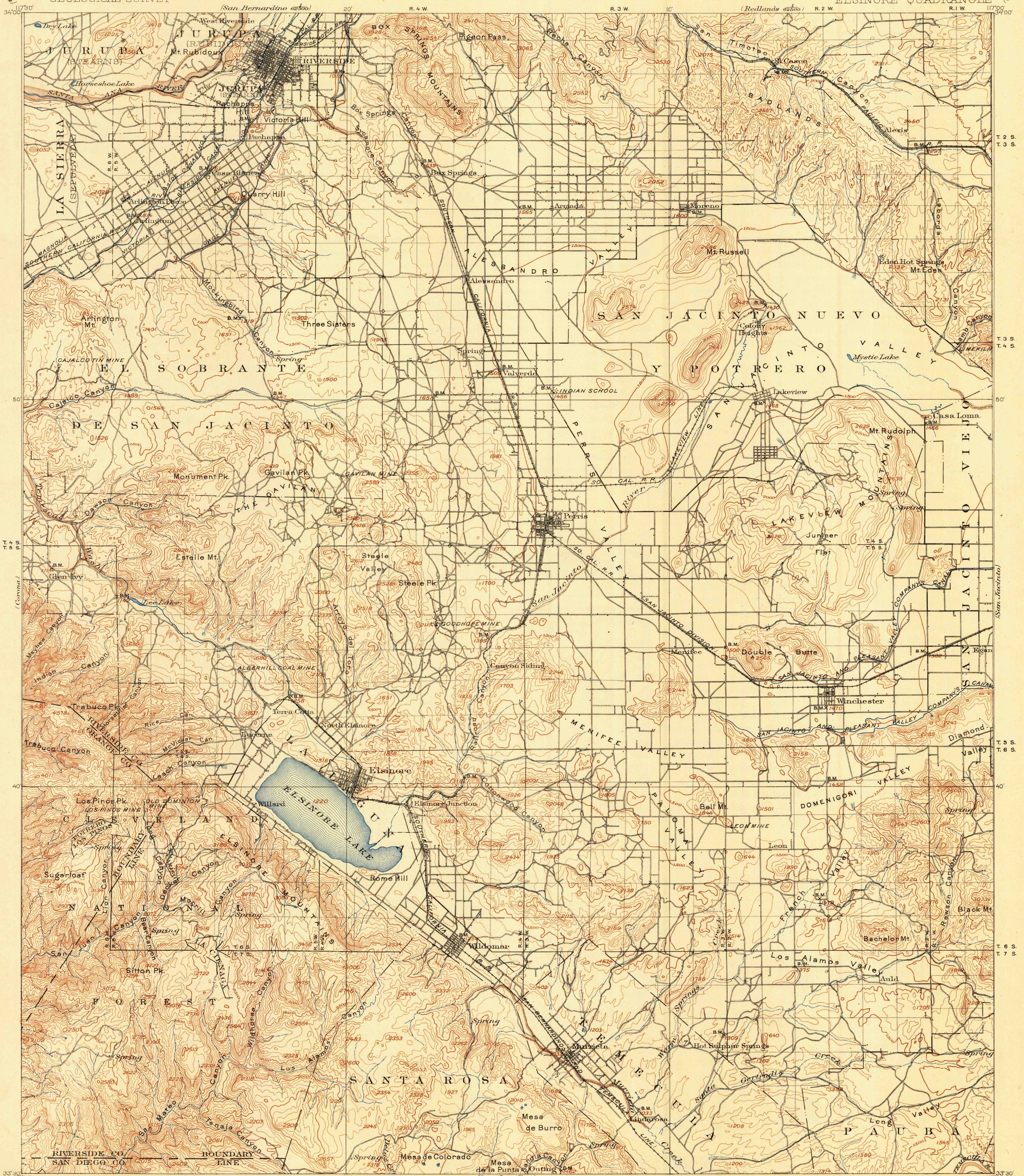


U. S. G. S.
FILE COPY
Inspection and Editing.

UNITED STATES
DEPARTMENT OF THE INTERIOR
GEOLOGICAL SURVEY

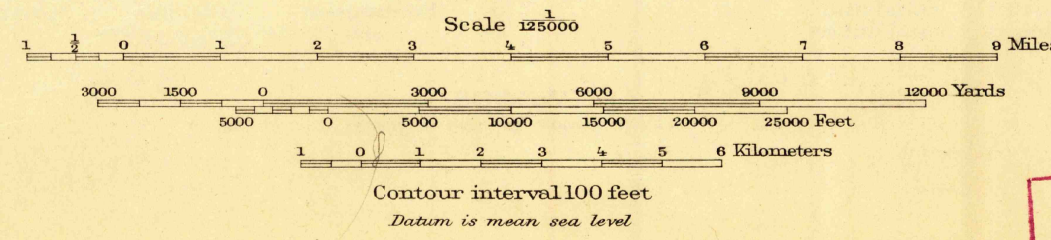
CALIFORNIA
ELSINORE QUADRANGLE



R. U. Goode, Geographer in charge.
Triangulation by A. P. Davis.
Topography by R. B. Marshall.
Surveyed in 1897-98.

DIAGRAM OF TOWNSHIP

6	5	4	3	2	1
7	8	9	10	11	12
18	17	16	15	14	13
19	20	21	22	23	24
30	29	28	27	26	25
31	32	33	34	35	36



Map of the Riverside quadrangle, scale 1:62,500, contour interval 25 feet, from a later and more detailed survey of the northwest quarter of this quadrangle, is available.

Edition of Feb. 1901, reprinted 1948
Polyconic projection.

HISTORICAL
USGS
U. S. Historical File
FILE COPY
Topographic Division
Inspection and Editing.

ELSINORE, CALIF.
N3330-W11700/30

MAY 26 1948

5420