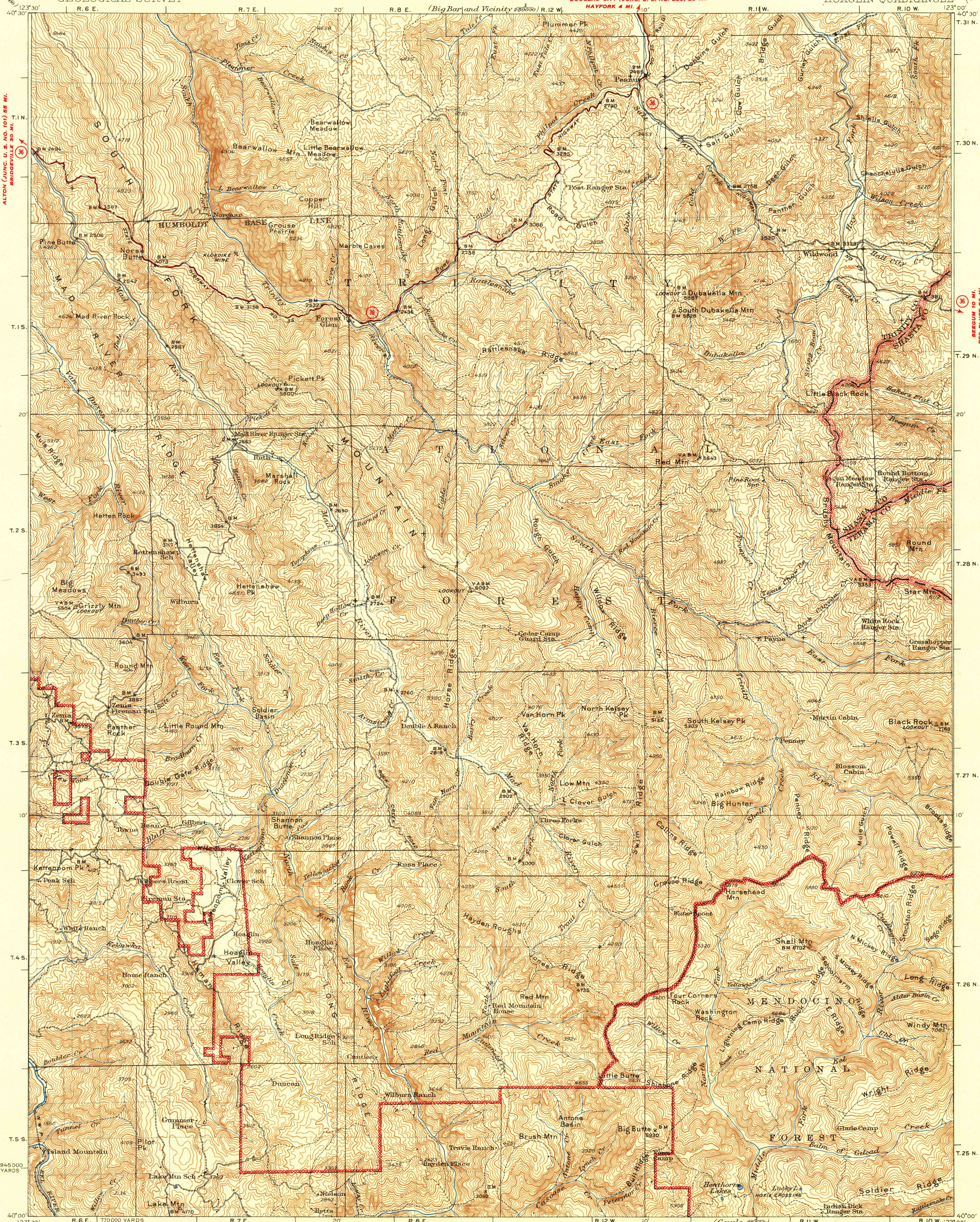


UNITED STATES  
DEPARTMENT OF THE INTERIOR  
GEOLOGICAL SURVEY

CALIFORNIA  
HOAGLIN QUADRANGLE



ALTON (JUNC. U. S. NO. 101) 55 MI.  
BRIDGEVILLE 50 MI.

DOUGLAS CITY (JUNC. U. S. NO. 285) 23 MI.  
HAYFORK 4 MI. 10'

REESGUN 10 MI.  
RED BLUFF 53 MI.

U. S. G. S.  
FILE COPY  
Inscribed and Edited.

Topography by S.N. Stoner, C.N. Mortenson, and U.S. Forest Service. Surveyed in 1930-1931.

Scale 1:25000

1 2 3 4 5 6 7 8 9 Miles

3000 1500 0 3000 6000 9000 12000 Yards

5000 10000 15000 20000 25000 Feet

1 0 1 2 3 4 5 Kilometers

Contour interval 100 feet  
Datum is mean sea level

USGS  
Historical File  
Topographic Division

ROUTES USUALLY TRAVELED  
HARD IMPERVIOUS SURFACES  
OTHER SURFACE IMPROVEMENTS  
U. S. ROUTE 1944 STATE ROUTE

APPROXIMATE MEAN DECLINATION, 1931

Land lines pertaining to T.1 N., R.7 E., Tps. 25, 26, and 27 N., Rs. 10 and 11 W., and T. 25 N., R. 12 W., M. Diabolo base and meridian are omitted because land plats and topography can not be reconciled.

HOAGLIN CALIF.  
Edition of 1935  
reprinted 1944  
N 4000-W 12300/30

NOV 20 1944

3190