

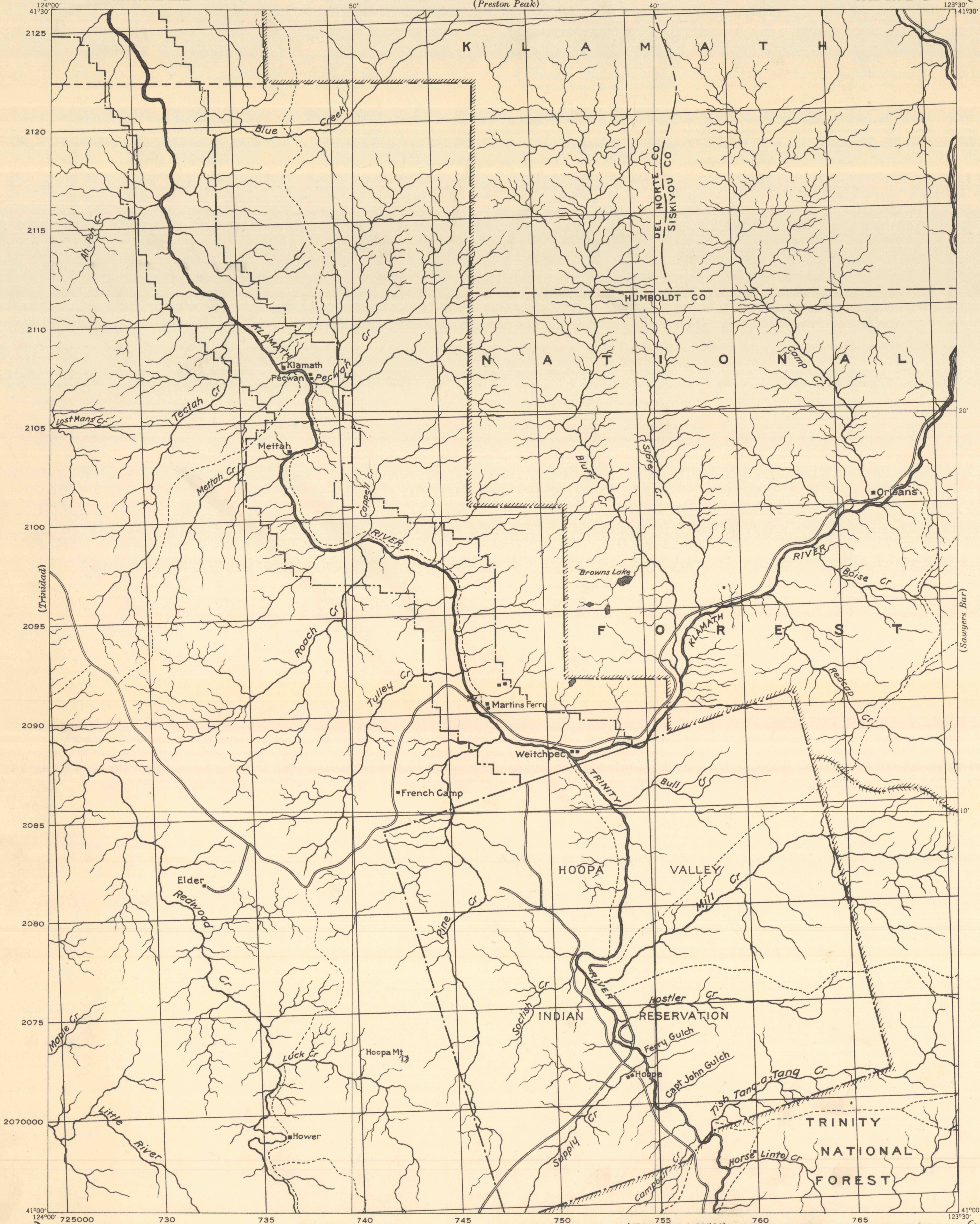
(Crescent City)

CORPS OF ENGINEERS, U. S. ARMY  
TACTICAL MAP

ADVANCE SHEET  
1645:04/05  
(Preston Peak)

CALIFORNIA  
HOOPA QUADRANGLE  
GRID ZONE "G"

(Siskiyou)



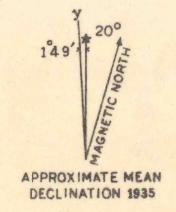
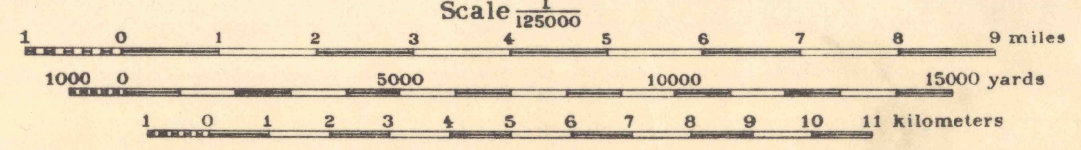
725000  
730  
735  
740  
745  
750  
755  
760  
765  
770

Col. Thomas H. Jackson, Engineer, 9th Corps Area.  
Klamath National Forest, 1909.  
Hoopa Valley Indian Reservation, 1912.  
Humboldt County Road Map, 1925.

(Korbel 1:62500)

(China Flat 1:62500)

ENGINEER REPRODUCTION PLANT, U. S. ARMY, FORT HUMPHREYS, D. C.



FIVE THOUSAND YARD GRID COMPUTED FROM "GRID SYSTEM FOR PROGRESSIVE MAPS  
IN THE U. S. ZONE G, U. S. C. & G. S. SPECIAL PUBLICATION NO. 59.  
(THE LAST THREE DIGITS OF THE GRID NUMBERS ARE OMITTED)

NOTE: OFFICERS USING THIS MAP WILL MARK HEREON CORRECTIONS AND ADDITIONS WHICH COME  
TO THEIR ATTENTION AND MAIL DIRECT TO "THE CHIEF OF ENGINEERS, WASHINGTON, D. C."

HOOPA  
CAL

(Big Bar and Trinity)

(Baraka 1:62500)

FILE COPY  
MAP INFORMATION OFFICE

525004