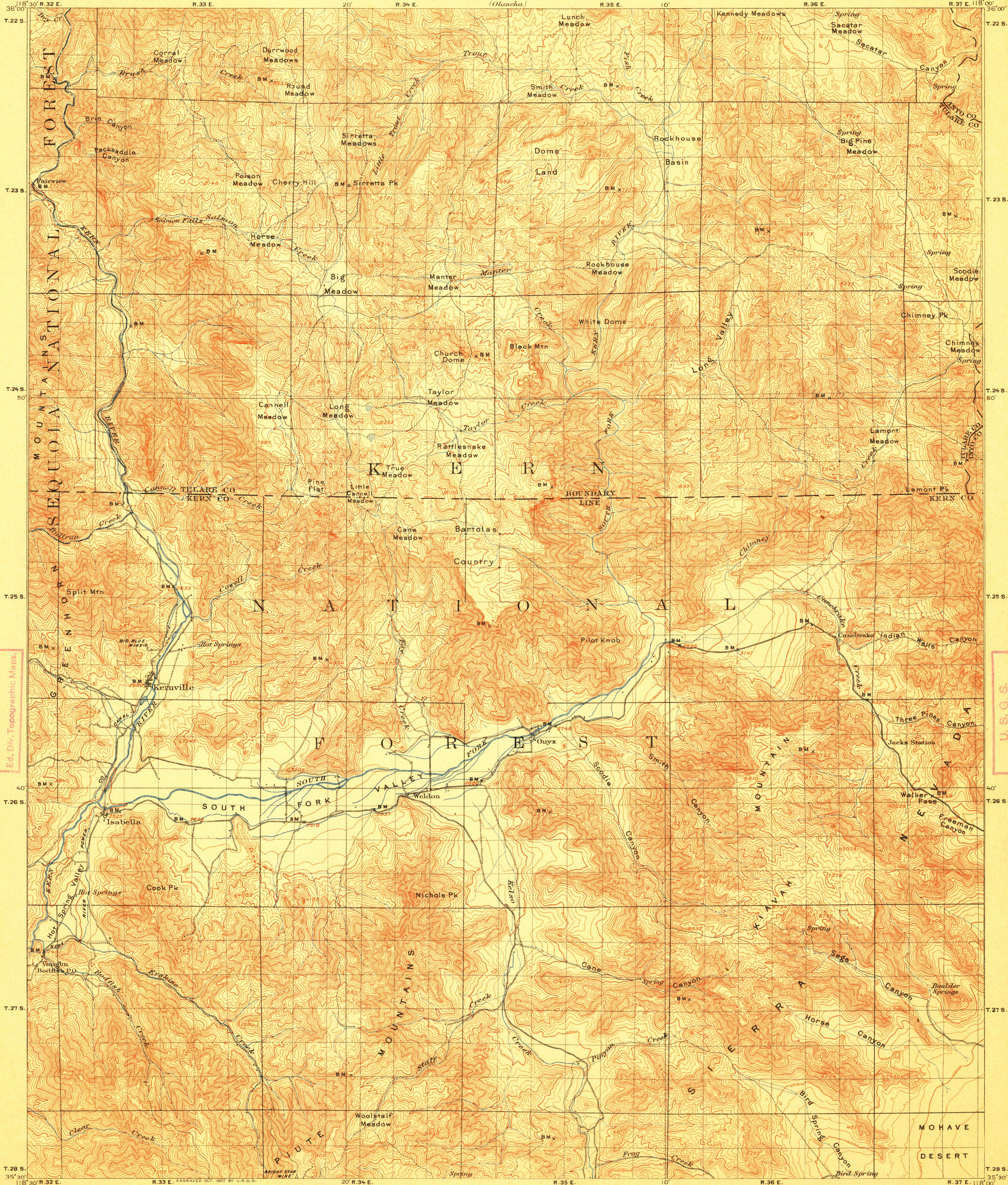


TOPOGRAPHY

U.S. GEOLOGICAL SURVEY
GEORGE OTIS SMITH, DIRECTOR

STATE OF CALIFORNIA
DEPARTMENT OF ENGINEERING
(Olancho)

CALIFORNIA
KERNVILLE QUADRANGLE



U.S.G.S.
FILE COPY
Ed. Div. Topographic Maps

U.S.G.S.
FILE COPY
Ed. Div. Topographic Maps

E. M. Douglas, Geographer.
R. B. Marshall, in charge of section.
Topography by G. R. Davis, Arthur Stiles, and J. W. Muller.
Triangulation by C. F. Urquhart.
Surveyed in 1906.

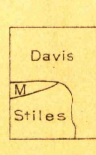
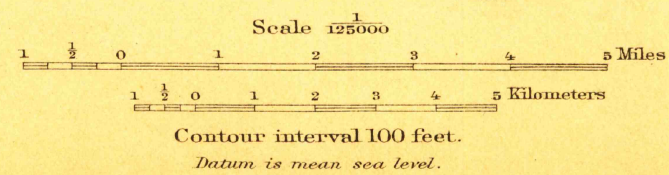
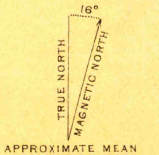


DIAGRAM OF TOWNSHIP

6	5	4	3	2	1
7	8	9	10	11	12
18	17	16	15	14	13
19	20	21	22	23	24
30	29	28	27	26	25
31	32	33	34	35	36

Edition of Jan. 1908, reprinted Sept. 1912.

OCT 19 1912 3126
USGS
Historical File
Topographic Division
KERNVILLE