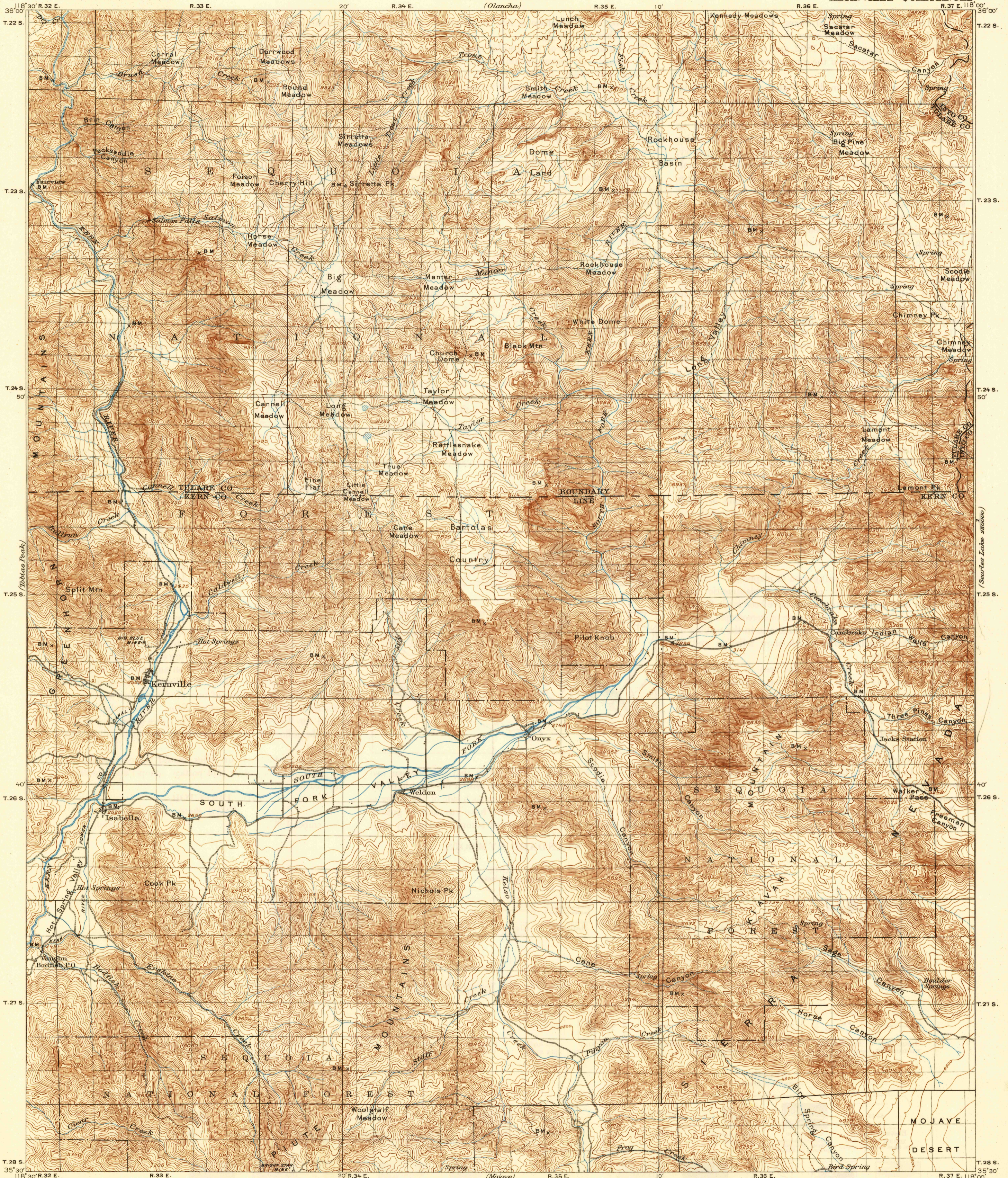


U.S.G.S.  
FILE COPY  
Issued in and Edited.

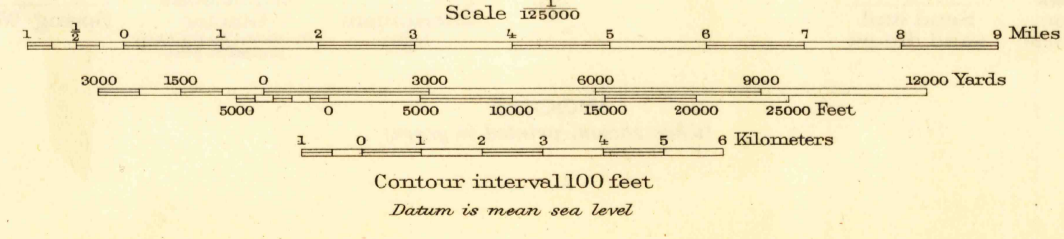
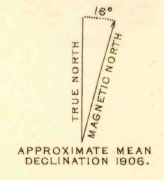
UNITED STATES  
DEPARTMENT OF THE INTERIOR  
GEOLOGICAL SURVEY

STATE OF CALIFORNIA  
REPRESENTED BY THE  
DIRECTOR OF PUBLIC WORKS  
(Olancho)

CALIFORNIA  
KERNVILLE QUADRANGLE



(Kernville)  
E. M. Douglas, Geographer.  
R. B. Marshall, in charge of section.  
Topography by G. R. Davis, Arthur Stiles, and J. W. Muller.  
Triangulation by C. F. Urquhart.  
Surveyed in 1906.



Davis  
Stiles

Edition of Jan. 1908, reprinted 1946  
Polyconic projection, North American datum

CALIF.  
KERNVILLE  
N3530-W11800/30

USGS U.S.  
Historical File  
Topographic Division

3115

MAR 11 1948