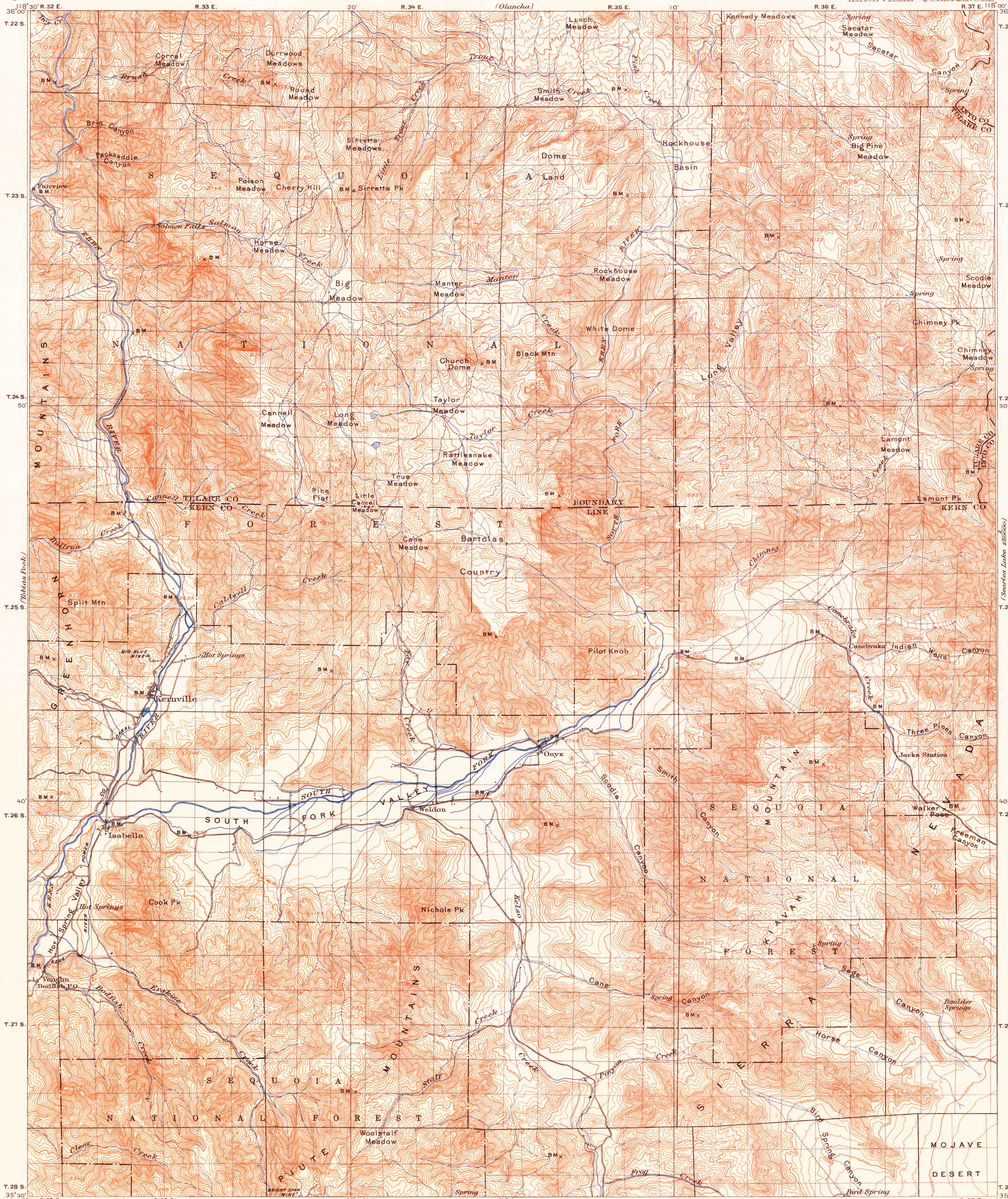


U.S.G.S.  
FILE COPY  
Inspection and Editing

(Ballarat)  
250000



E. M. Douglas, Geographer.  
R. B. Marshall, in charge of section.  
Topography by G. R. Davis, Arthur Stiles, and J. W. Muller.  
Triangulation by C. F. Urquhart.  
Surveyed in 1906.

TRUE NORTH  
MAGNETIC NORTH  
APPROXIMATE MEAN  
DECLINATION 1906.

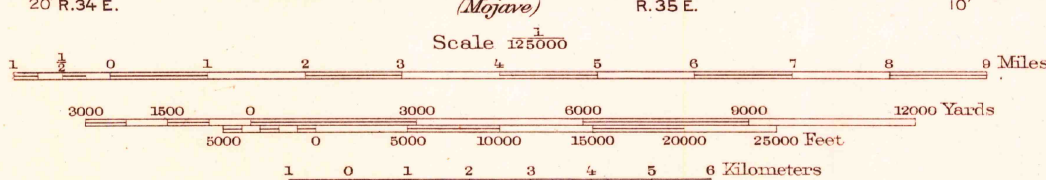


DIAGRAM OF TOWNSHIP

6	5	4	3	2	1
7	8	9	10	11	12
18	17	16	15	14	13
19	20	21	22	23	24
30	29	28	27	26	25
31	32	33	34	35	36

Edition of Jan. 1908, reprinted 1951.  
Polyconic projection, North American datum

CALIF.  
KERNVILLE  
N3530-W11800/30

Maps of the Isabella and Onyx quadrangles,  
scale 1:62,500, from later and more detailed  
surveys, covering the south half of this area are  
available.

USGS  
Historical File  
Topographic Division

FOR SALE BY U.S. GEOLOGICAL SURVEY, FEDERAL CENTER, DENVER, COLORADO OR WASHINGTON 25, D.C.  
A FOLDER DESCRIBING TOPOGRAPHIC MAPS AND SYMBOLS IS AVAILABLE ON REQUEST

U.S.G.S.  
FILE COPY  
Inspection and Editing