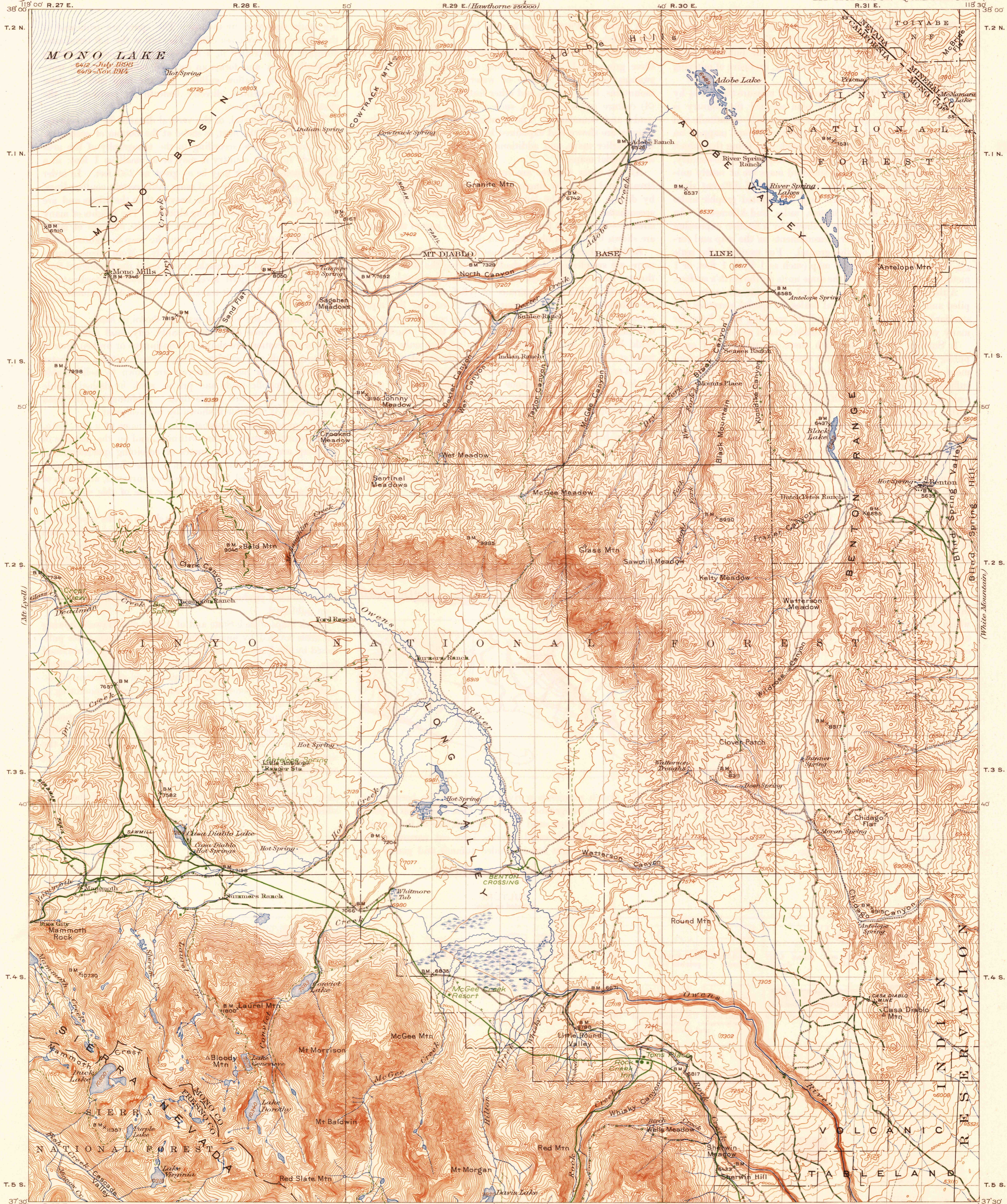


U.S.G.S.
FILE COPY
Inspection and Editing.

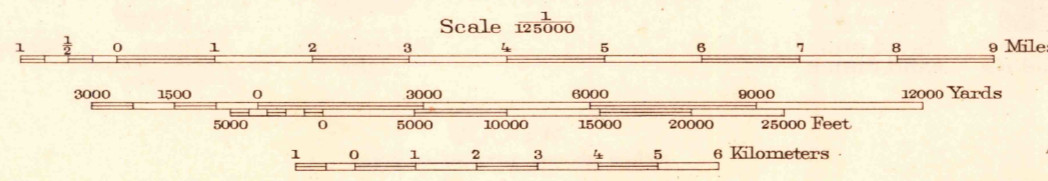
UNITED STATES
DEPARTMENT OF THE INTERIOR
GEOLOGICAL SURVEY

CALIFORNIA-NEVADA
MT. MORRISON QUADRANGLE
R. 31 E.



R.B. Marshall, Chief Geographer.
T.G. Gardine, Geographer in charge.
Topography by B.A. Jenkins, J.G. Staack, S.E. Taylor,
and C.W. Wardle.
Control by C.F. Urquhart, L.F. Biggs, and C.W. Wardle.
Surveyed in 1911-1912.

S.E.T.
W.
B.A.J.
S.



Contour interval 100 feet
Datum is mean sea level
Readjustment indicates that elevations on
this map should be decreased 7 feet.

Scale 1:25000
Edition of 1914, reprinted 1945
Polyconic projection, North American datum
THROUGH ROADS
SECONDARY ROADS
TRAILS
Additional roads and trails
from information furnished
by Forest Service, 1934.
APPROXIMATE MEAN
DECLINATION 1911.

USGS
Historical File
Topographic Division
Inspection and Editing.

MT. MORRISON, CALIF.-NEV.
N3730-W11830/30

JAN 22 1946

4280