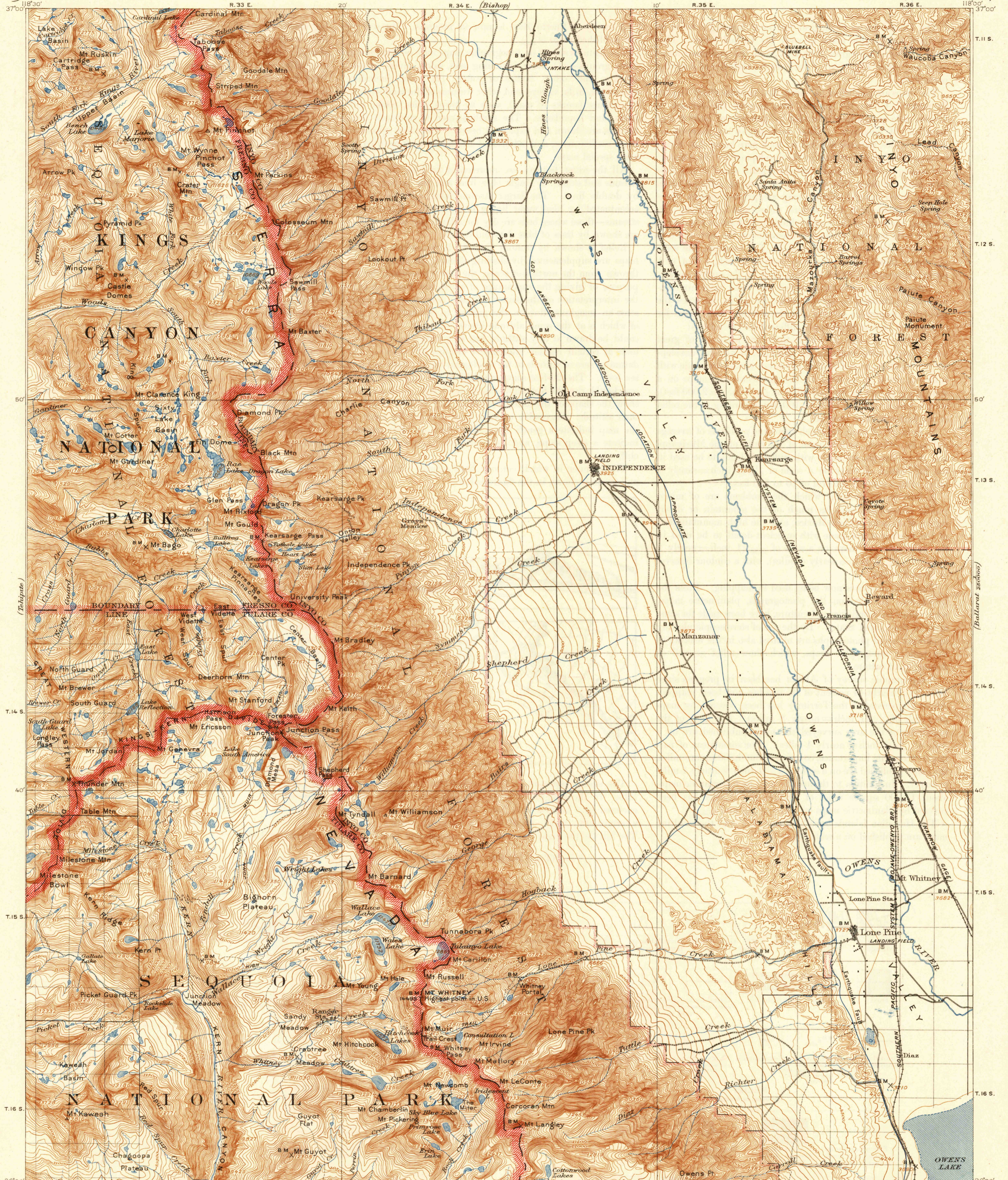


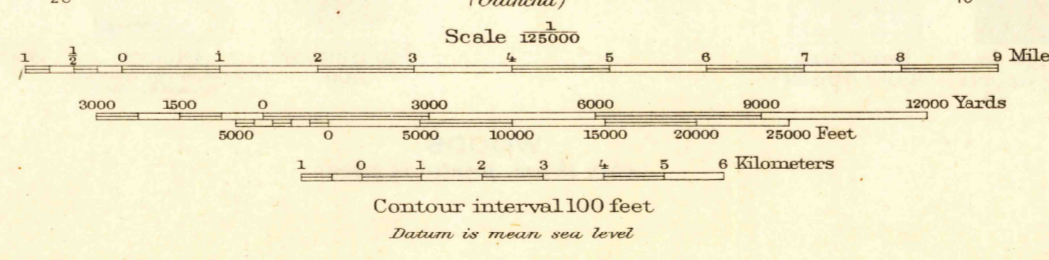
U. S. G. S.  
FILE COPY  
Inspection and Editing.

UNITED STATES  
DEPARTMENT OF THE INTERIOR  
GEOLOGICAL SURVEY

CALIFORNIA  
MT. WHITNEY QUADRANGLE



(Kaweah)  
E.M. Douglas, Geographer.  
R.B. Marshall, in charge of section.  
Topography by G.R. Davis, C.L. Nelson and S.N. Stoner.  
Triangulation by C.F. Urquhart.  
Surveyed in 1905.  
Revised in part, 1937.



USGS  
Historical File  
Topographic Division  
Edition of 1907, reprinted 1946  
Polyconic projection, North American datum

U. S. G. S.  
FILE COPY  
Inspection and Editing.

MT. WHITNEY, CALIF  
N3630-W1800/30

SEP 23 1946

5305