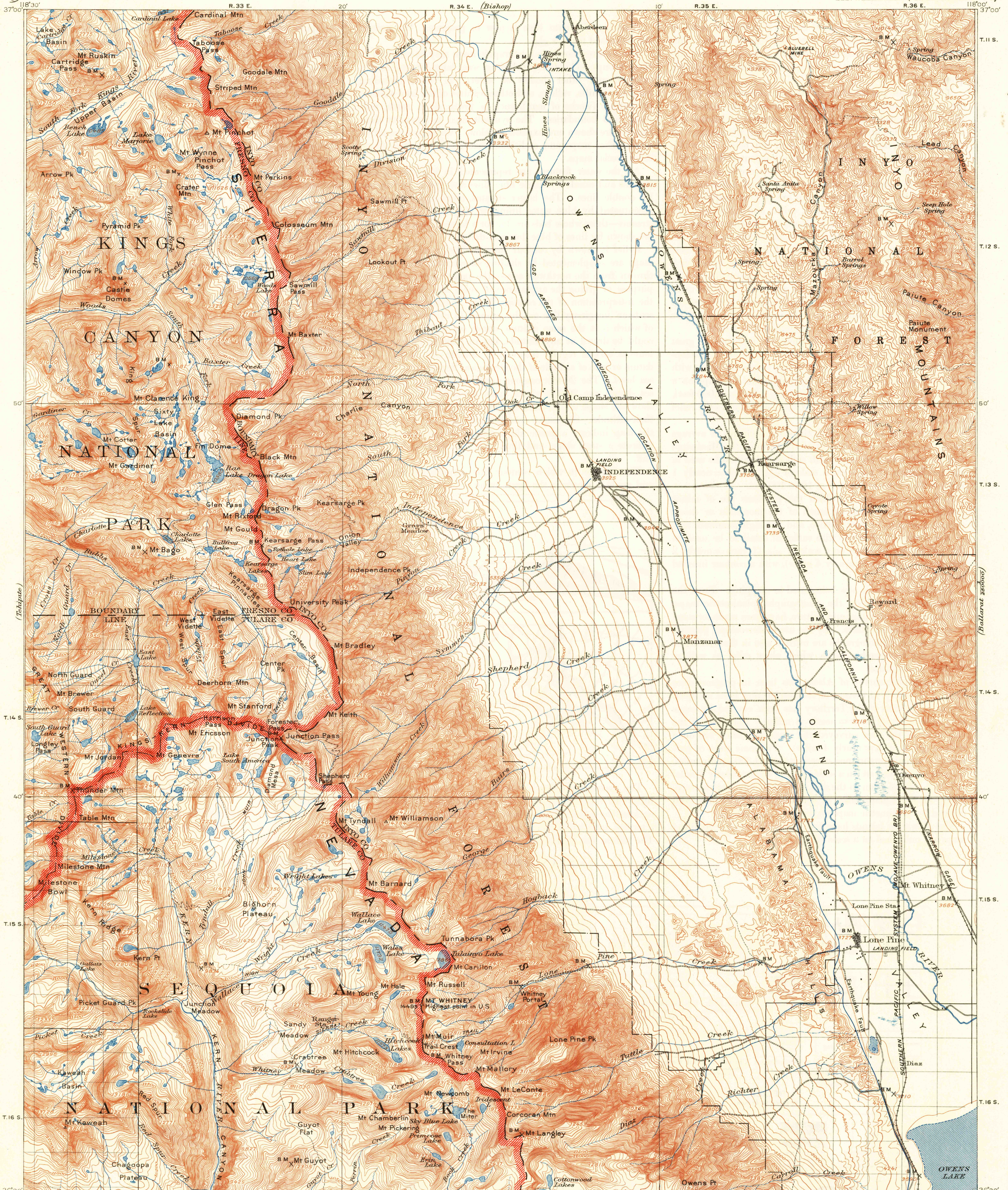


U. S. G. S.  
FILE COPY  
Inspection and Editing.

UNITED STATES  
DEPARTMENT OF THE INTERIOR  
GEOLOGICAL SURVEY

CALIFORNIA  
MT. WHITNEY QUADRANGLE  
R. 36 E.



E.M. Douglas, Geographer.  
R.B. Marshall, in charge of section.  
Topography by G.R. Davis, C.L. Nelson and S.N. Stoner.  
Triangulation by C.F. Urquhart.  
Surveyed in 1905.  
Revised in part, 1937.

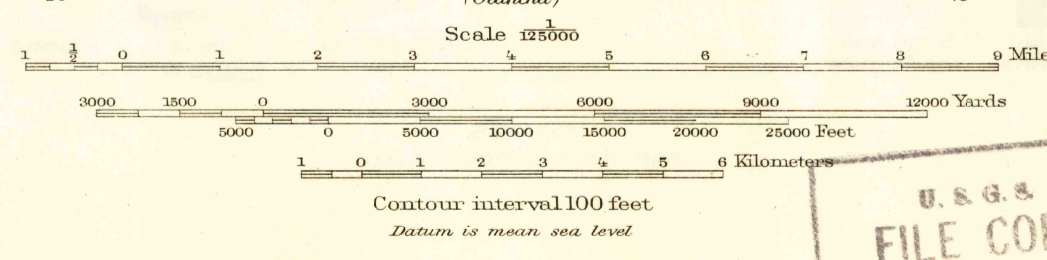


DIAGRAM OF TOWNSHIP

6	5	4	3	2	1
7	8	9	10	11	12
18	17	16	15	14	13
19	20	21	22	23	24
30	29	28	27	26	25
31	32	33	34	35	36

Edition of 1907, reprinted 1950.  
Polyconic projection, North American datum

USGS  
Historical File  
Topographic Division

MT. WHITNEY, CALIF.  
N3630-W11800/30

U. S. G. S.  
FILE COPY  
Inspection and Editing.