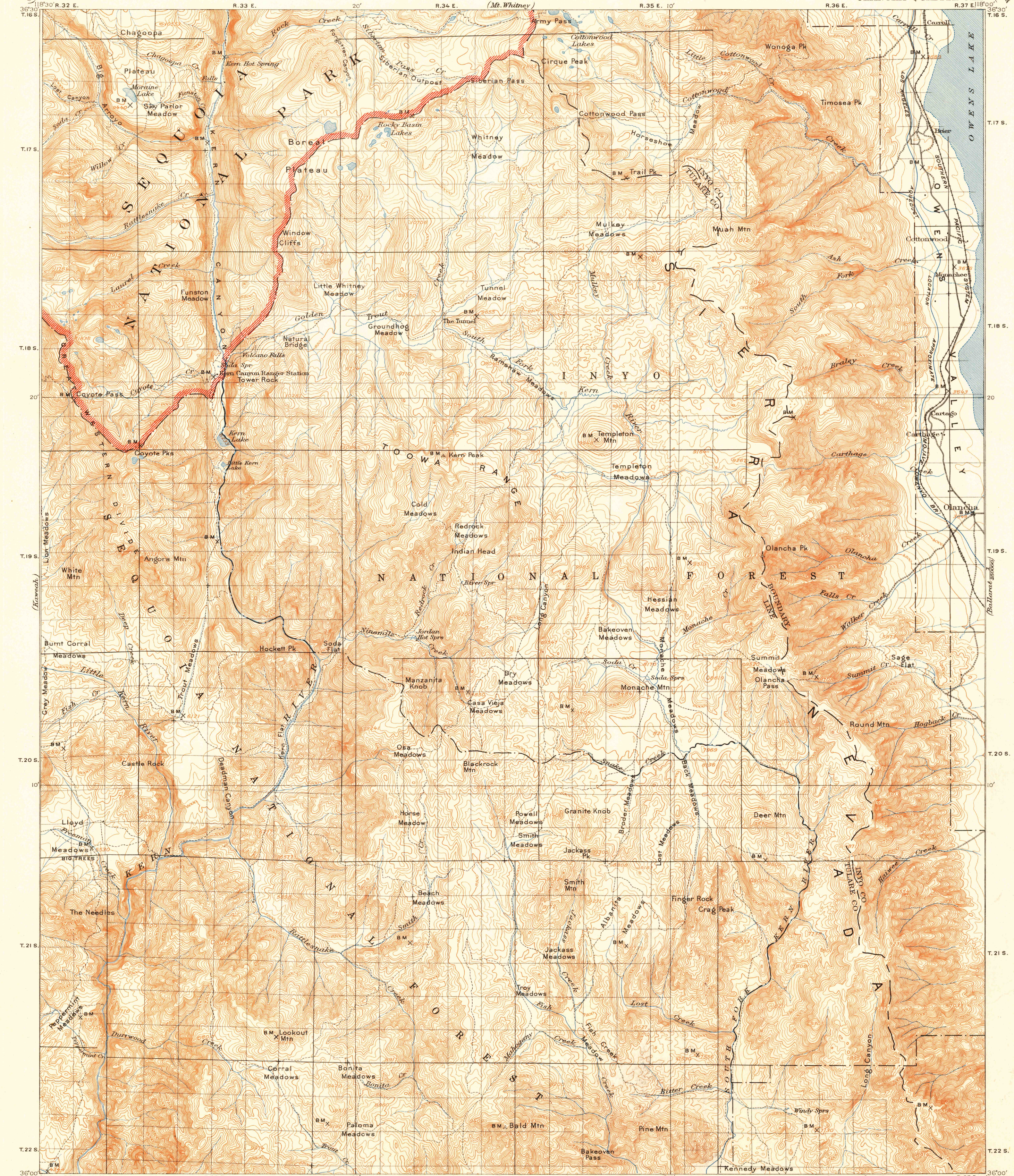


U.S.G.S.
FILE COPY
Inspection and Printing

UNITED STATES
DEPARTMENT OF THE INTERIOR
GEOLOGICAL SURVEY

CALIFORNIA
OLANCHA QUADRANGLE



E.M. Douglas, Geographer.
R.B. Marshall, in charge of section.
Topography by S.N. Stoner and J.P. Harrison.
Triangulation by C.F. Urquhart.
Surveyed in 1905.

TRUE NORTH
MAGNETIC NORTH
APPROXIMATE MEAN
DECLINATION 1905.

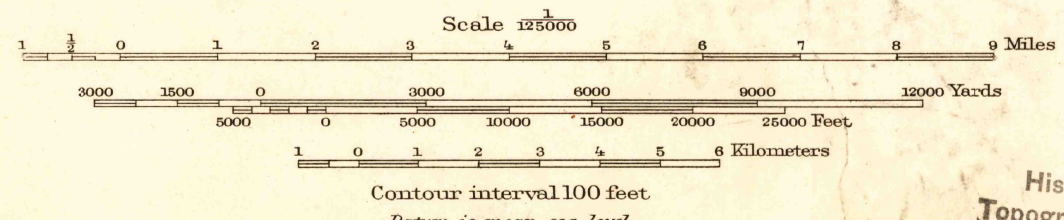


DIAGRAM OF TOWNSHIP

6	5	4	3	2	1
7	8	9	10	11	12
18	17	16	15	14	13
19	20	21	22	23	24
30	29	28	27	26	25
31	32	33	34	35	36

Edition of July 1907, reprinted 1951
Polyconic projection. North American datum

OLANCHA, CALIF.
N3600-W11800/30

USGS
Historical File
Topographic Division

U.S.G.S.
FILE COPY
Inspection and Printing

FOR SALE BY U.S. GEOLOGICAL SURVEY, FEDERAL CENTER, DENVER COLORADO OR WASHINGTON 25, D.C.
A FOLDER DESCRIBING TOPOGRAPHIC MAPS AND SYMBOLS IS AVAILABLE ON REQUEST

MAR 13 1951 / 353