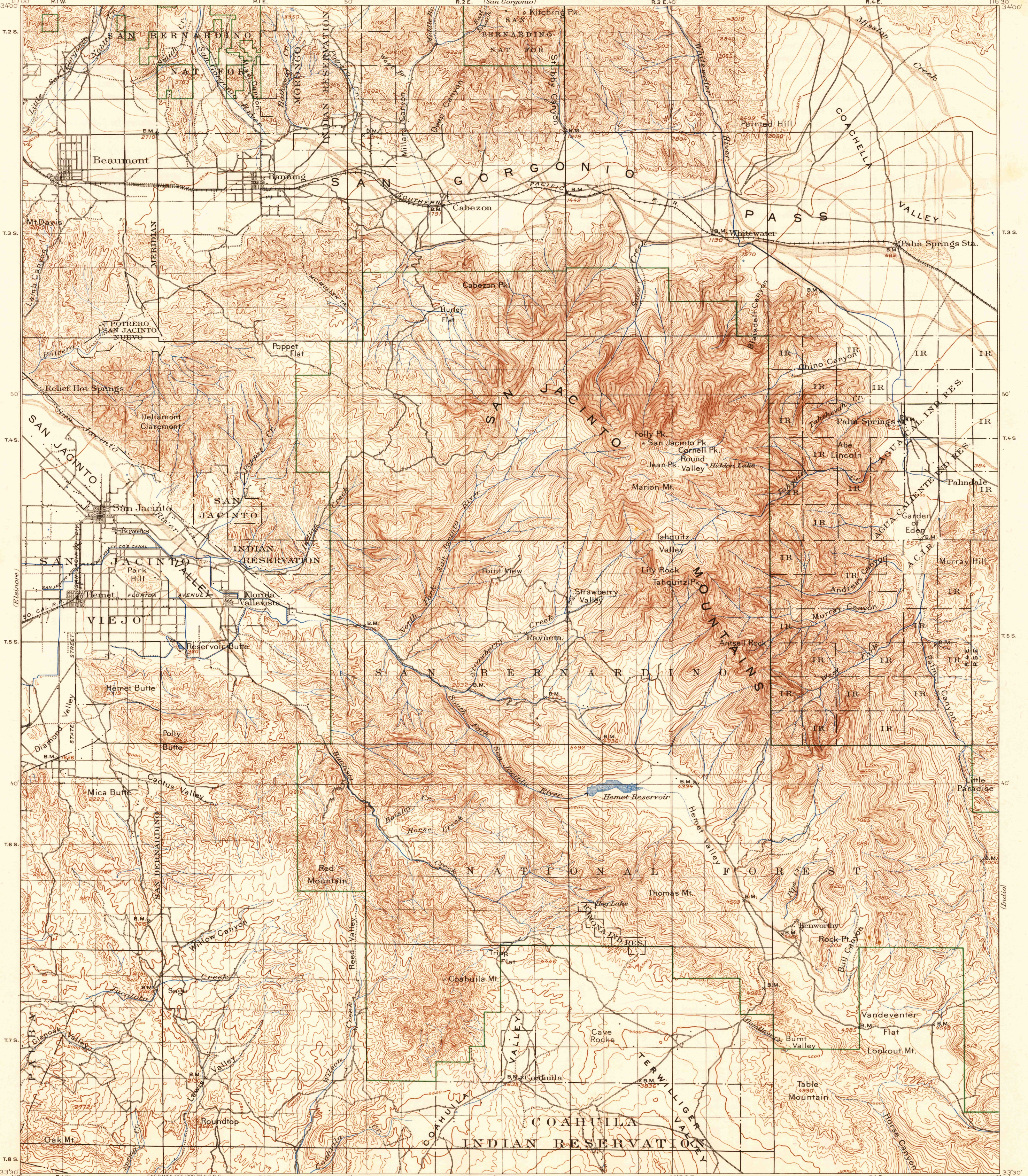


U.S.G.S. FILE COPY

CALIFORNIA (RIVERSIDE COUNTY) SAN JACINTO QUADRANGLE

DEPARTMENT OF THE INTERIOR U.S. GEOLOGICAL SURVEY

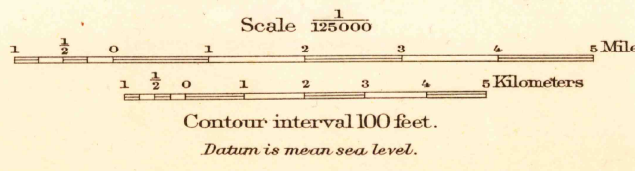
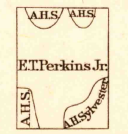


Vertical coordinate labels on the left margin: 34°00', T.2.S., T.3.S., 50', T.4.S., T.5.S., 40', T.6.S., T.7.S., T.8.S., 33°30'

Vertical coordinate labels on the right margin: 116°30', T.3.S., 50', T.4.S., T.5.S., 40', T.6.S., T.7.S., T.8.S., 33°30'

Horizontal coordinate labels at the bottom: R.1.W., R.1.E., 50', R.2.E. (Ramona), 40', R.3.E., R.4.E., 116°30'

R. U. Goode, Geographer in charge. Triangulation by A. H. Sylvester. Topography by E. T. Perkins Jr. and A. H. Sylvester. Surveyed in 1897-98.



U.S.G.S. Historical File Topographic Division

Edition of Sept. 1901, reprinted 1937. Polyconic projection. To place on North American datum move projection lines 650 feet south and 380 feet west.

SAN JACINTO, CALIF.

MAY 14 1937 (2921) 2930