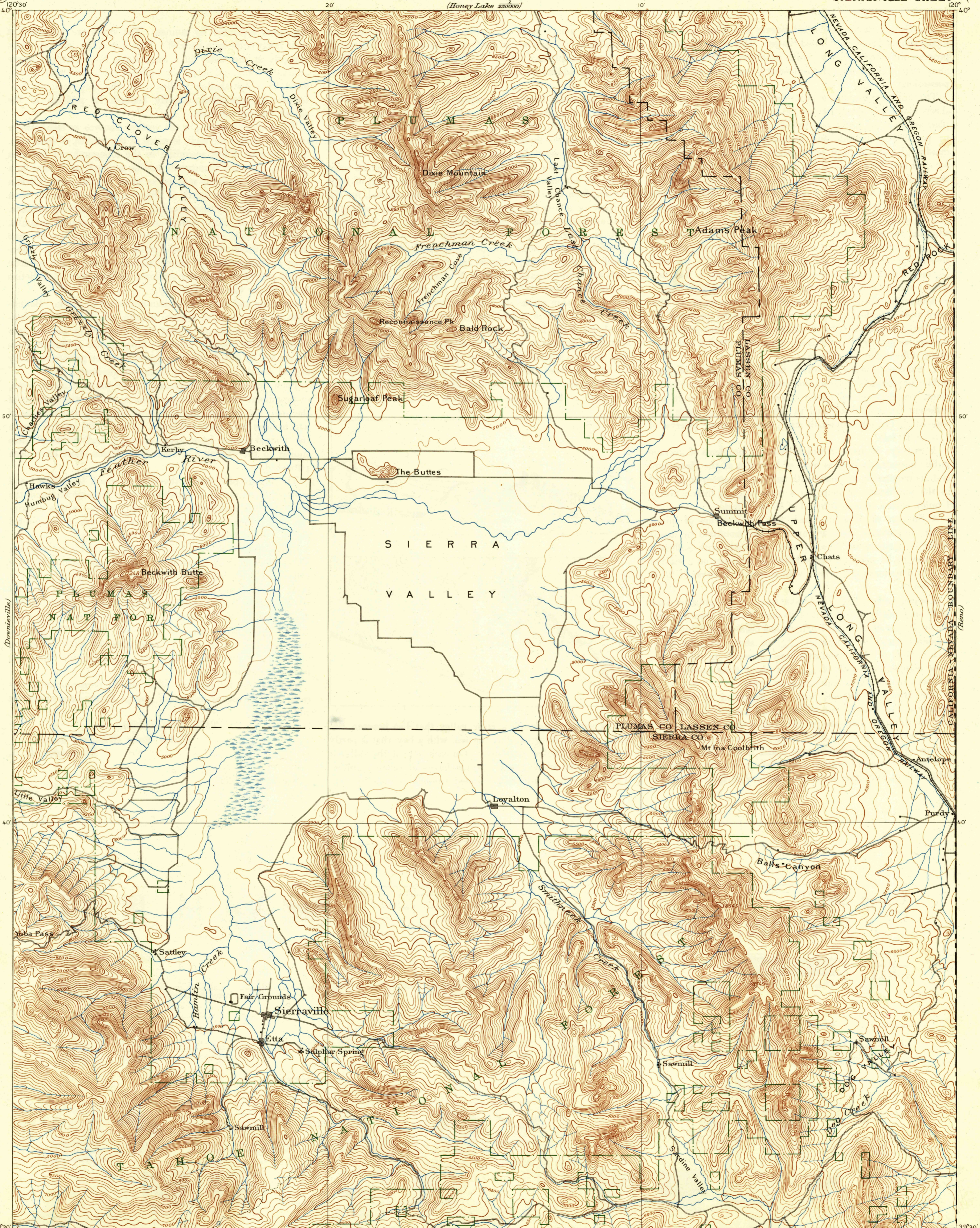


(Honey Lake)
825000



A.H. Thompson, Geographer.
E.M. Douglas, Topographer in charge.
Triangulation by E.M. Douglas.
Topography by A.F. Dunnington and R.H. Chapman.
Surveyed in 1889, 90.

Dunnington
Chapman

Scale 1/125,000
0 1 2 3 4 5 6 Miles
Contour Interval 100 feet
Datum is mean Sea level

USGS
Historical File
Topographic Division

This map made from surveys
without spirit level control.

Edition of Sept. 1894, reprinted 1937
Polyconic projection. To place on North American
datum move projection lines 680 feet south
and 300 feet west.

SIERRAVILLE, CALIF.

JAN 30 1937 (1900)

U.S.G.S.
FILE COPY
Inspection and Editing

1900