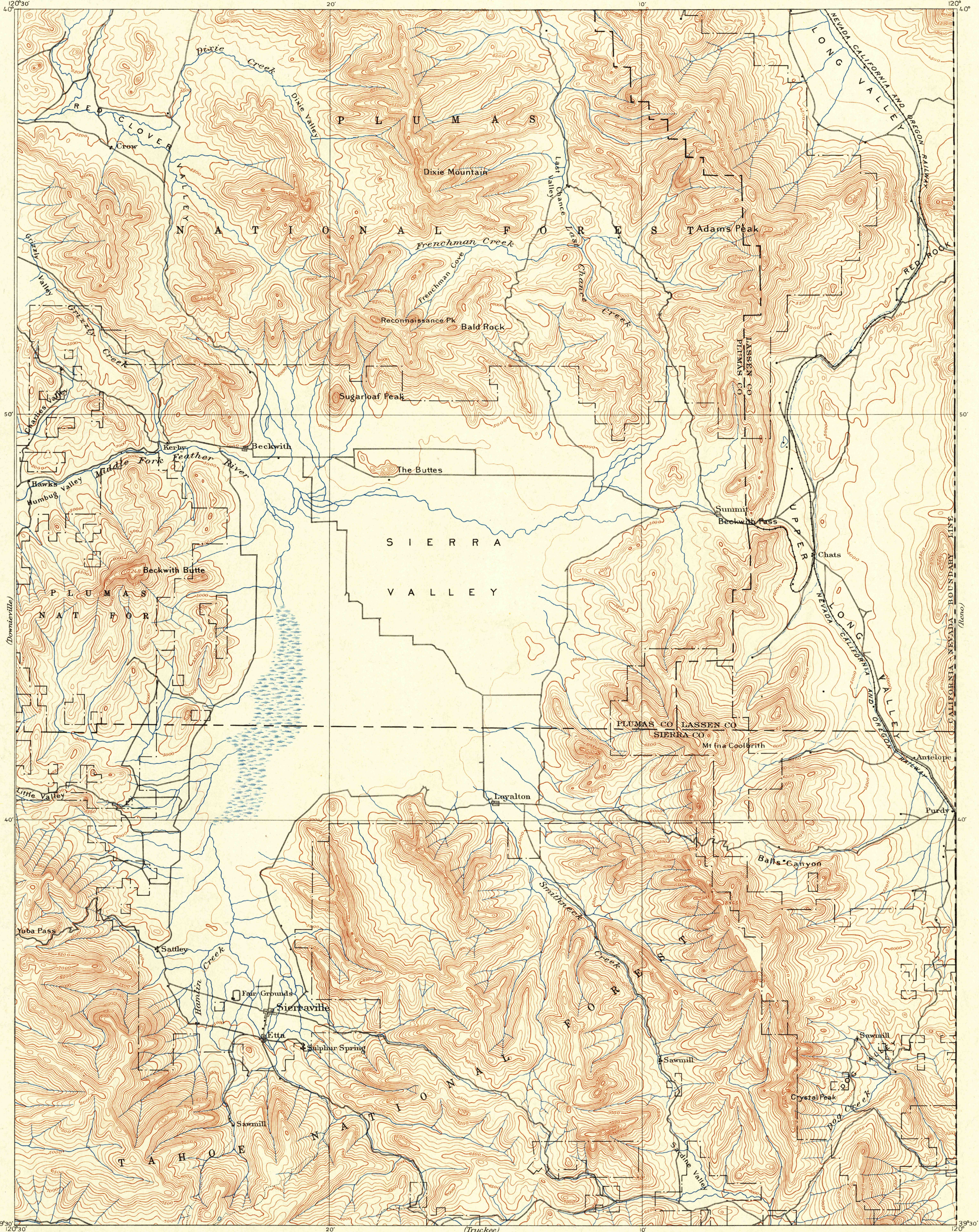


U.S.G.S.  
FILE COPY  
Inspection and Editing.

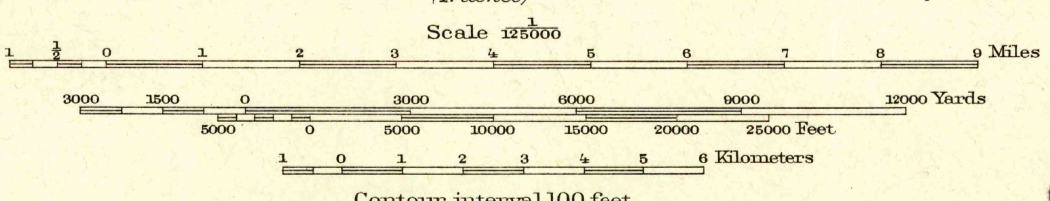
UNITED STATES  
DEPARTMENT OF THE INTERIOR  
GEOLOGICAL SURVEY

CALIFORNIA  
SIERRAVILLE SHEET



A.H. Thompson, Geographer.  
E.M. Douglas, Topographer in charge.  
Triangulation by E.M. Douglas.  
Topography by A.F. Dunnington and R.H. Chapman.  
Surveyed in 1889-90.

Dunnington  
Chapman



Contour interval 100 feet  
Datum is mean sea level

FOR SALE BY U.S. GEOLOGICAL SURVEY, FEDERAL CENTER, DENVER, COLORADO OR WASHINGTON 25, D.C.  
A FOLDER DESCRIBING TOPOGRAPHIC MAPS AND SYMBOLS IS AVAILABLE ON REQUEST

USGS  
Historical File  
Topographic Division

Edition of Sept. 1894, reprinted 1951  
Polyconic projection.  
Surveyed by reconnaissance methods.

SIERRAVILLE, CALIF.

N3930-W12000/30

U.S.G.S.  
FILE COPY  
Inspection and Editing.

JUN 20 1951

318