

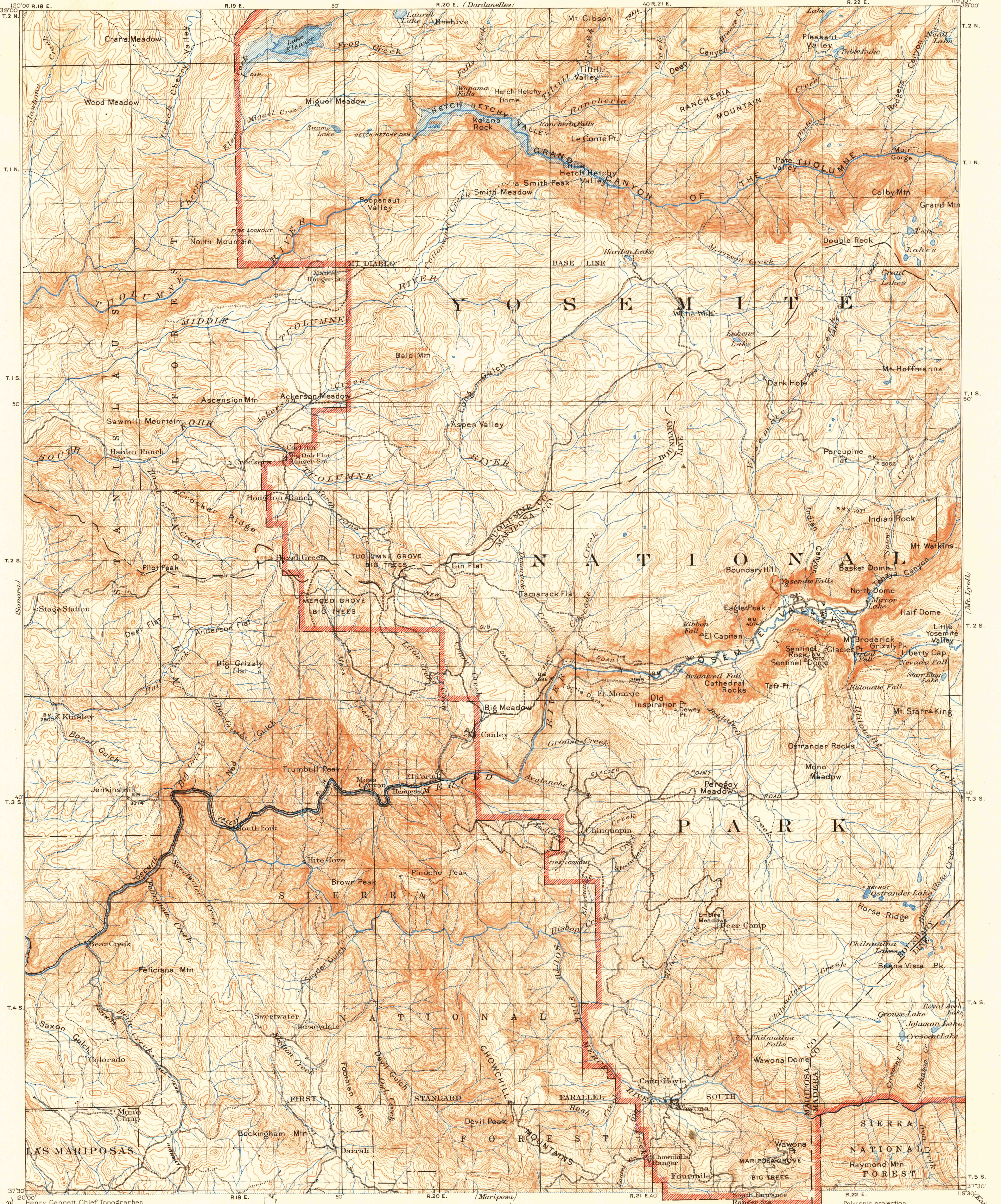
Big Trees

UNITED STATES  
DEPARTMENT OF THE INTERIOR  
GEOLOGICAL SURVEY

U.S.G.S.  
FILE COPY  
Topography and History

CALIFORNIA  
YOSEMITE QUADRANGLE

Bridgeport



Indian Gulch  
2200

Henry Gannett Chief Topographer.  
R.U. Goode Geographer in charge.  
Triangulation by H.E.C. Feussier.  
Topography by R.B. Marshall.  
Surveyed in 1893-94.

APPROXIMATE MEAN  
MAGNETIC DECLINATION 1902

Scale 1:25,000  
1 2 3 4 5 6 7 8 9 Miles  
3000 15000 0 3000 6000 9000 12000 Yards  
1 0 1 2 3 4 5 6 Kilometers

Contour interval 100 feet  
Datum is mean sea level

The elevations on this map were later found to be 95 feet too high.

FOR SALE BY U.S. GEOLOGICAL SURVEY, FEDERAL CENTER, DENVER, COLORADO OR WASHINGTON 25, D.C.  
A FOLDER DESCRIBING TOPOGRAPHIC MAPS AND SYMBOLS IS AVAILABLE ON REQUEST

USGS  
Historical File  
Topographic Division

Map of Yosemite Valley, scale 1:24,000, contour interval 50 feet, from later and more detailed surveys of the valley and adjacent area, is available.

Surveyed by reconnaissance methods

DIAGRAM OF TOWNSHIP				
6	5	4	3	2
1	7	8	9	10
11	12	13	14	15
16	17	18	19	20
21	22	23	24	25
26	27	28	29	30
31	32	33	34	35
36				

PARK BOUNDARY

U.S.G.S.  
FILE COPY  
Inspection and Editing

CALIF.  
YOSEMITE  
Edition of 1909  
reprinted 1951  
N3730-W11930/30

MAR 1 1951

542