

TOPOGRAPHY

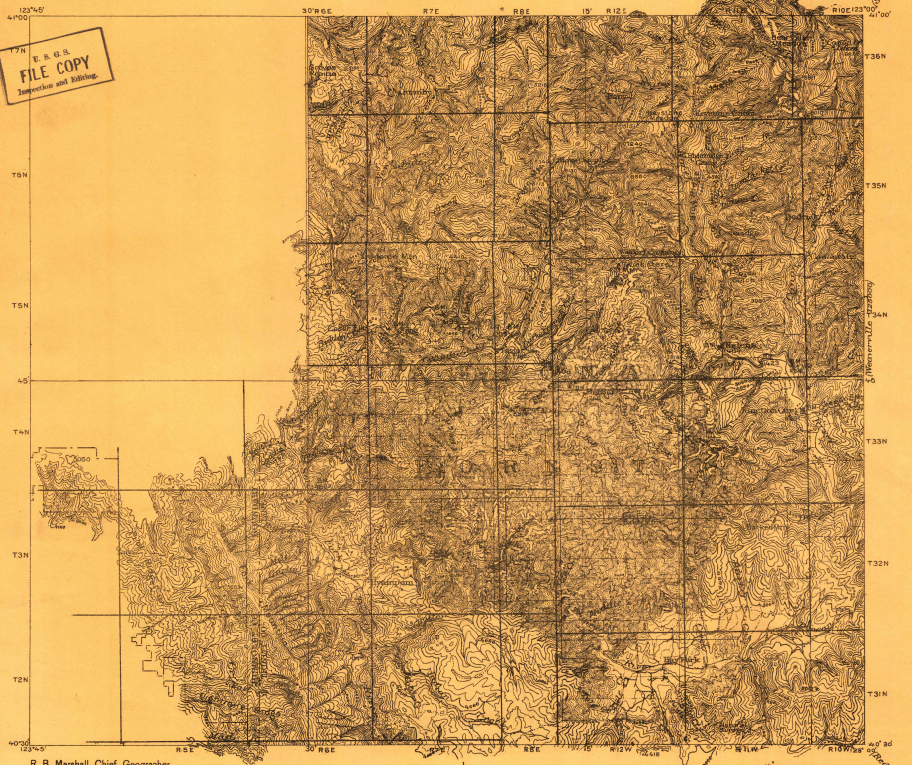
U. S. GEOLOGICAL SURVEY
 GEORGE OTIS SMITH, DIRECTOR

CALIFORNIA
 BIG BAR QUADRANGLE

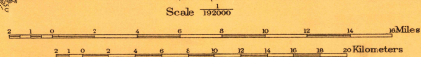
Advance sheet
 Subject to correction

TOPOG
 RETAINED
 This sheet must not be
 removed from the files of the
 Oliver (1907-1910)

U. S. G. S.
 FILE COPY
 Zoning and Rating



R. B. Marshall, Chief Geographer
 T. G. Gardine, Geographer in charge
 Topography by J. P. Harrison
 Control by C. F. Urquhart, A. I. Oliver,
 L. F. Biggs and G. C. Jacobs.
 Surveyed in 1907-1909-1910-1911.



Contour interval 200 feet
 Datum is mean sea level



Big Bar, Calif.